



**Price**  
**£360,000**

**Freehold**

4x  1x  2x 

**Celtic Road, Deal, Kent,  
CT14**

**OVER 60?**

Secure this property  
for up to **59% less!**

*Wards*  
Helping you move forwards



## Main features

- Driveway parking for 2 vehicles
- Chain free with potential to add your own stamp
- Rear garden with garage/workshop
- Popular location close to shops, schools and Walmer train station
- Spacious family home with great flow

## Accommodation

### GROUND FLOOR

Entrance Porch  
 Lounge : 20'2 x 12'11 (6.15m x 3.94m)  
 Kitchen: 18'0 x 7'11 (5.49m x 2.41m)  
 Cloakroom  
 Dining Room : 13'7 x 12'6 (4.14m x 3.81m)

### FIRST FLOOR

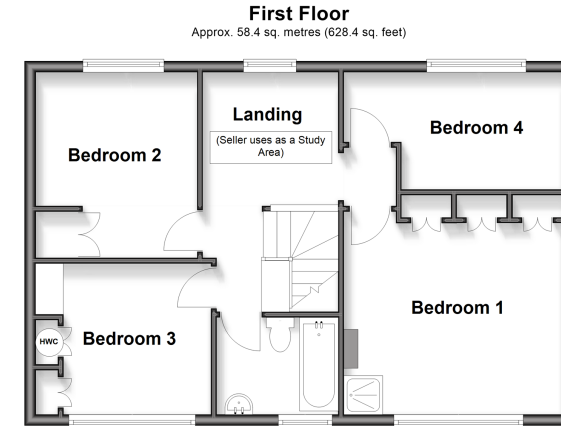
Landing/ Study Area  
 Bedroom 1: 13'0 x 11'11 (3.97m x 3.63m)  
 Bedroom 4: 12'11 x 6'11 (3.94m x 2.11m)  
 Bedroom 2: 9'7 x 9'7 (2.92m x 2.92m)  
 Bedroom 3: 11'0 x 9'9 (3.36m x 2.97m)  
 Bathroom

### OUTBUILDING

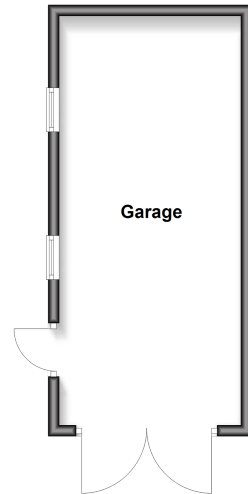
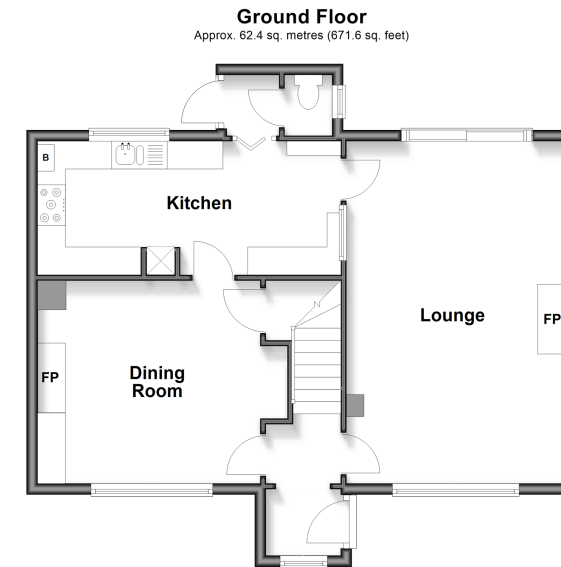
Garage

### OUTSIDE

Driveway  
 Front and rear Gardens



**Outbuilding**  
 Approx. 24.0 sq. metres (258.8 sq. feet)



**Call Deal - 01304 361420 ■ [wardsof Kent.co.uk](http://wardsof Kent.co.uk)**

- Legal advice should be taken to verify fixtures/fittings, planning, alterations and/or lease details
- Appliances & services are untested, dimensions are approximate and floor plans are not to scale
- Through a Homewise Home For Life Plan people aged 60+ can secure this property for up to 59% less, by purchasing a Lifetime Lease



10635676/20260207/BG/LB1