



Sinclair  Hammelton



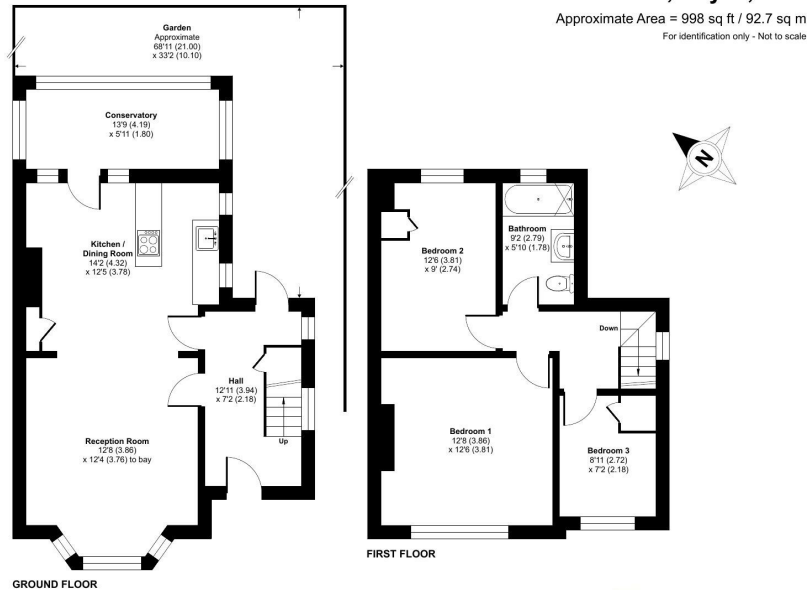
GUIDE PRICE

£580,000

Bourne Vale

Bromley, BR2 7NZ

EPC RATING: D COUNCIL TAX BAND: E



Energy Efficiency Rating		Current	Potential
Very energy efficient - lower running costs			
(92 plus) A			
(81-91) B			
(69-80) C			
(55-68) D			
(39-54) E			
(21-38) F			
(1-20) G			
Not energy efficient - higher running costs			
England & Wales		EU Directive 2002/91/EC	



Agents Note: Whilst every care has been taken to prepare these particulars, they are for guidance purposes only. All measurements are approximate and are for general guidance purposes only and whilst every care has been taken to ensure their accuracy, they should not be relied upon and potential buyers/tenants are advised to recheck the measurements

Floor plan produced in accordance with RICS Property Measurement 2nd Edition, Incorporating International Property Measurement Standards (IPMS2 Residential). © nichecom 2026. Produced for Withers & Curtis. REF: 1484221

Sinclair Hammelton

Sinclair Hammelton

OFFICE ADDRESS

57 Station Approach
Hayes
Kent
BR2 7EB

OFFICE DETAILS

020 8462 0360
infohy@sinclairhammelton.co.uk
<https://www.sinclairhammelton.co.uk/for-sale-in-hayes/>