



WIMBLEDON PARK SIDE, SW19

£550,000

Purpose built apartment
Two bedrooms
Third floor
Lift service
Garage/residents parking
Energy rating: c

@marshandparsons
marshandparsons.co.uk

MARSH &
PARSONS



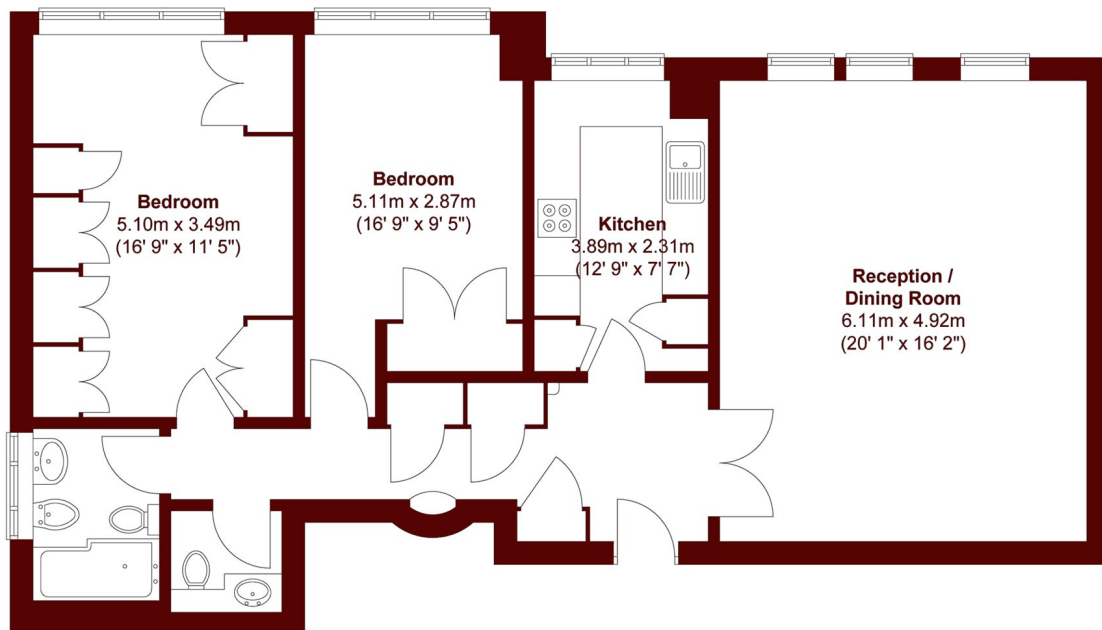
ABOUT THE PROPERTY

This purpose built apartment has two double bedrooms, a large reception room with high ceilings, separate kitchen and a modern bathroom located on the top floor of this highly sought after development on Wimbledon Park side. The property further benefits from residential parking, private garage and communal garden.

Wimbledon Park Side is located moments from the open spaces of Putney Heath and Wimbledon Common with easy access to Wimbledon town centre which offers exceptional transport facilities both by rail and underground.



STEP INSIDE WIMBLEDON PARK SIDE



Total area (approx.) : 91 sq. m (980 sq. ft)

Wimbledon
020 8879 6660

Energy Rating: C We aim to make our particulars both accurate and reliable. However, they are not guaranteed; nor do they form part of an offer or contract. If you require clarification on any points then please contact us, especially if you're traveling some distance to view. Please note that appliances and heating systems have not been tested and therefore no warranties can be given as to their good working order

MARSH &
PARSONS