



Ashworth House The Street, Ashted KT21

3AD

V&H
HOMES

Your local property specialist

Ashworth House The Street
Ashtead KT21 2AD

First Floor Apartment

Open Plan Lounge/Kitchen

Fully Integrated Kitchen

Bathroom with Shower over bath

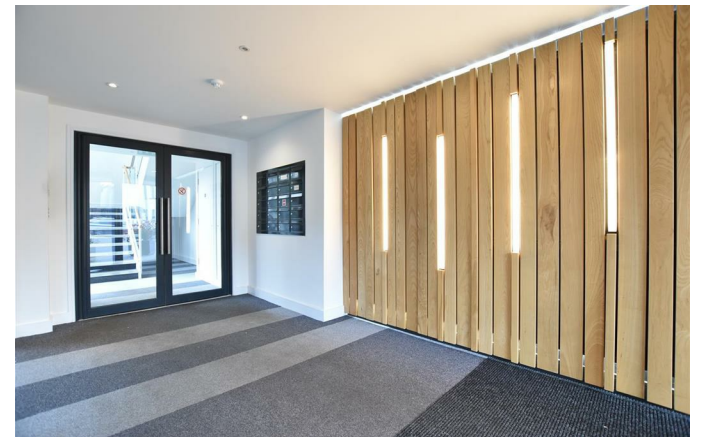
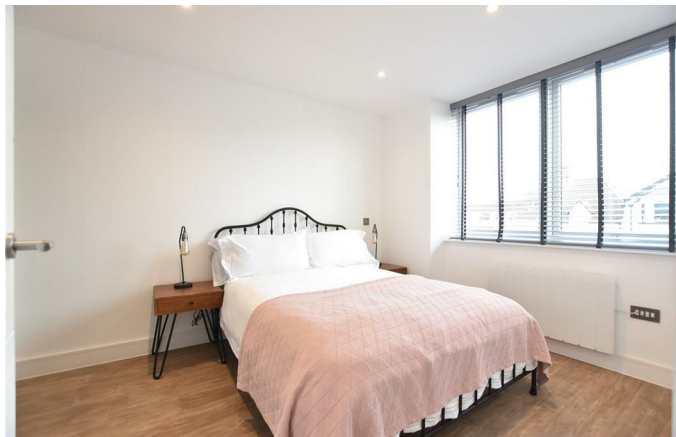
One Double Bedroom

Allocated Parking Space

EPC Rating: C

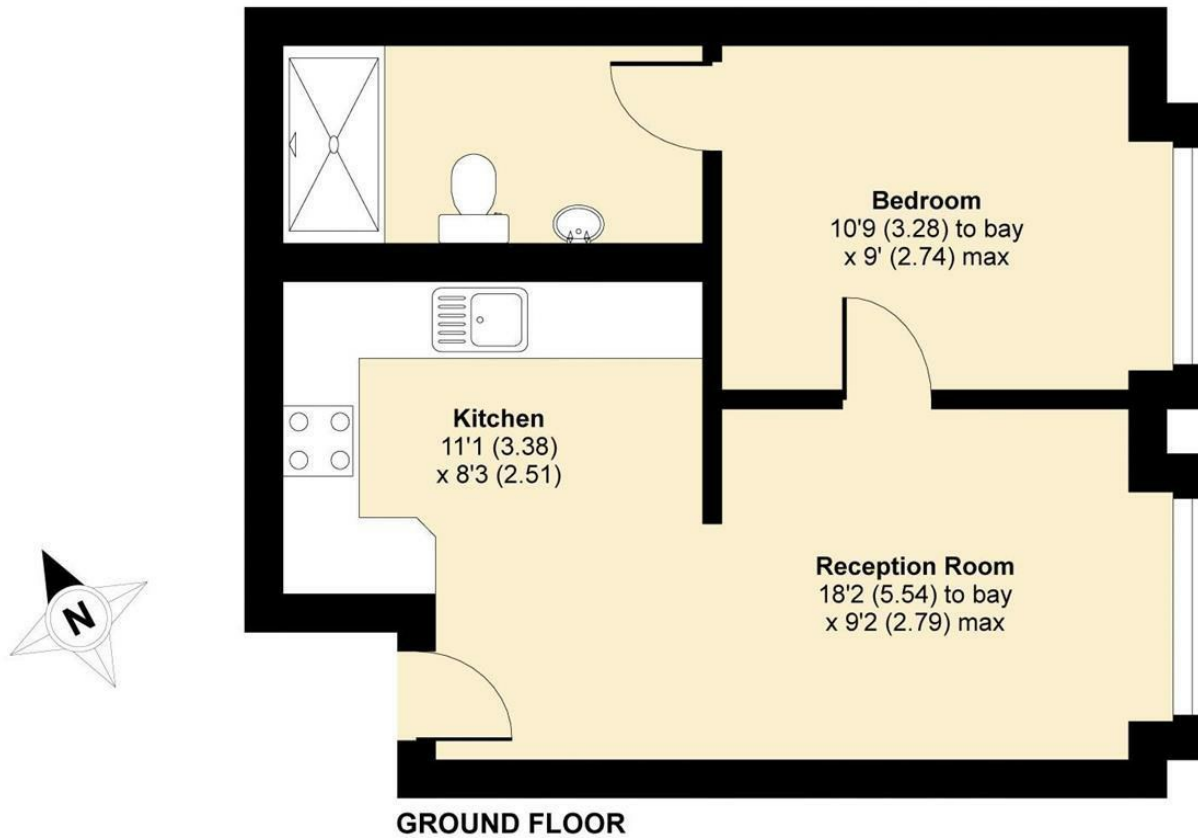
Council Tax Band C - Mole Valley





The Street, Ashted, KT21

APPROX. GROSS INTERNAL FLOOR AREA 410 SQ FT 38 SQ METRES



V&H
&
HOMES

Whilst every attempt has been made to ensure the accuracy of the floor plan contained here, measurements of doors, windows and rooms are approximate and no responsibility is taken for any error, omission or misstatement. These plans are for representation purposes only as defined by RICS Code of Measuring Practice and should be used as such by any prospective purchaser. Specifically no guarantee is given on the total square footage of the property if quoted on this plan. Any figure given is for initial guidance only and should not be relied on as a basis of valuation.

Copyright nichecom.co.uk 2016 Produced for V&H Homes REF : 154368

V&H Homes

01372 221 678

sales@vhomes.co.uk

www.vhomes.co.uk

rightmove 

Zoopla

 PrimeLocation.com

 The Property Ombudsman


hometrack

V&H
&
HOMES

Your local property specialist