



The Dormers – SN6 7PB
Highworth

Guide Price **£400,000**
mcfarlane
property.com

The Dormers

Highworth - Wiltshire

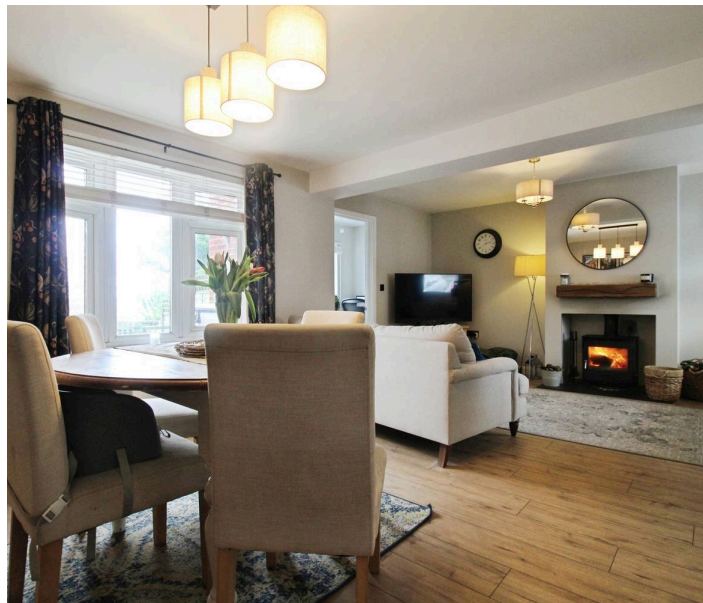
Highworth is in North-East Wiltshire with borders close to Oxfordshire. This vibrant and versatile market town stands on a hill above the upper Thames Valley, and at 436 ft (133 m) above sea level is believed to be the highest town in Wiltshire. It is 6 miles (10 km) North-East of Swindon (with views over to the White Horse Hill and Ridgeway). Highworth offers a variety of amenities from a bustling high street with a plethora of outlets and eateries. There is also well renowned schooling to include primary and secondary with colleges in Cirencester and Swindon respectively plus the Military College in Watchfield - Shrivenham. There is also a thriving and active community with sports and social clubs that have been long established and well respected.

Council Tax band: C

Tenure: Freehold

EPC Energy Efficiency Rating: C

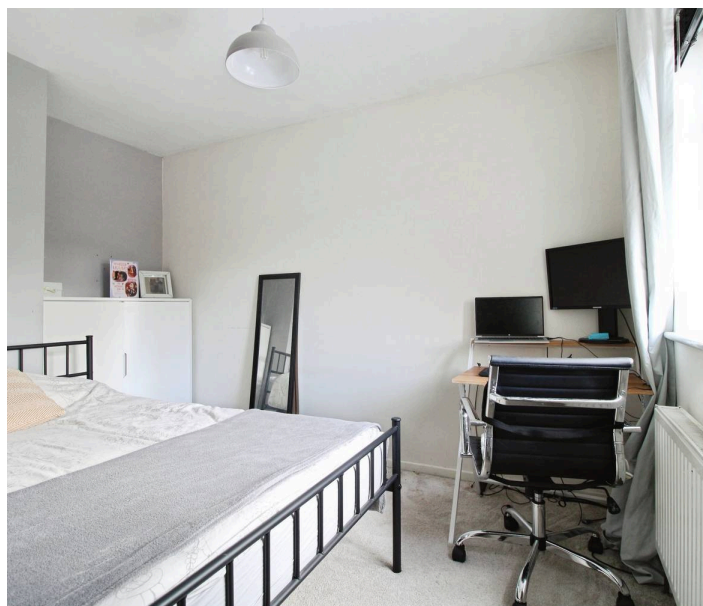
EPC Environmental Impact Rating: C



The Dormers

Highworth - Wiltshire

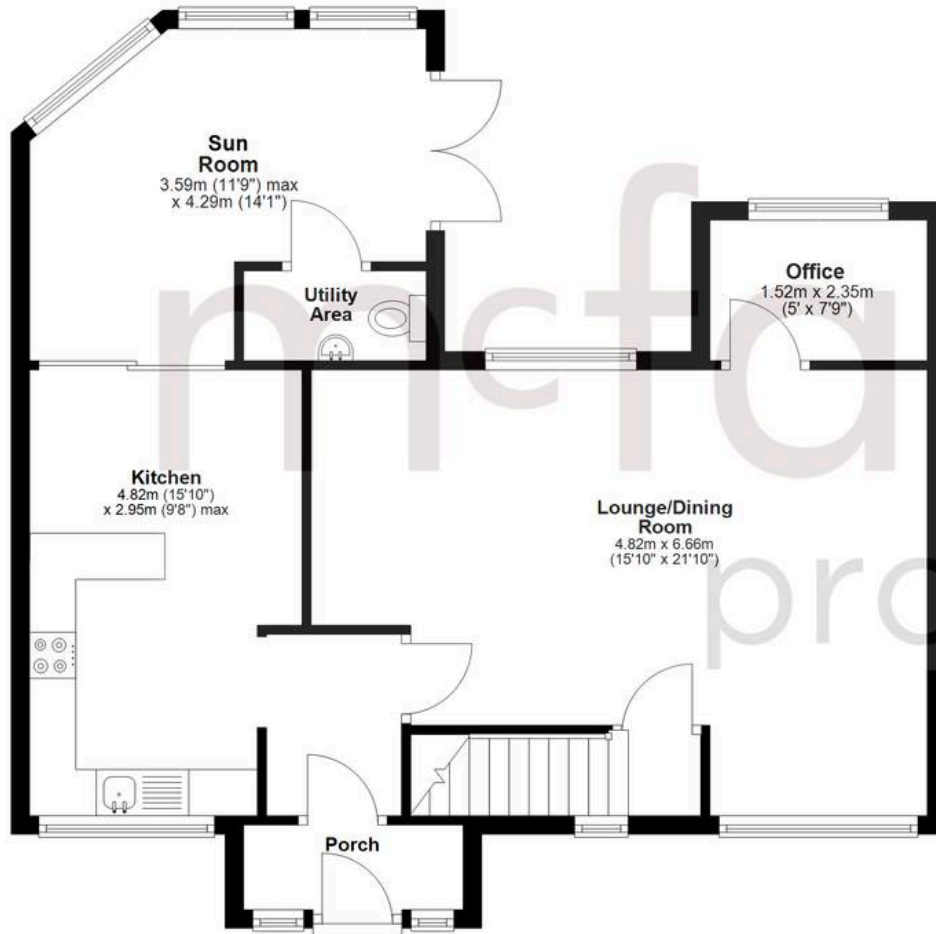
- Stunning Improved and Extended Family Home
- Elevated Highworth Position with Rural Views to the Rear and Beyond
- THREE DOUBLE BEDROOMS and Two Bathrooms
- Over 1200 Sq Ft Family Home
- Kitchen Breakfast + Living Room + Conservatory + Study + WC
- Expansive Rear Views towards White Horse Hill and Shrivenham
- Sought After Market Town
- Viewing Recommended



mcfarlane
property.com

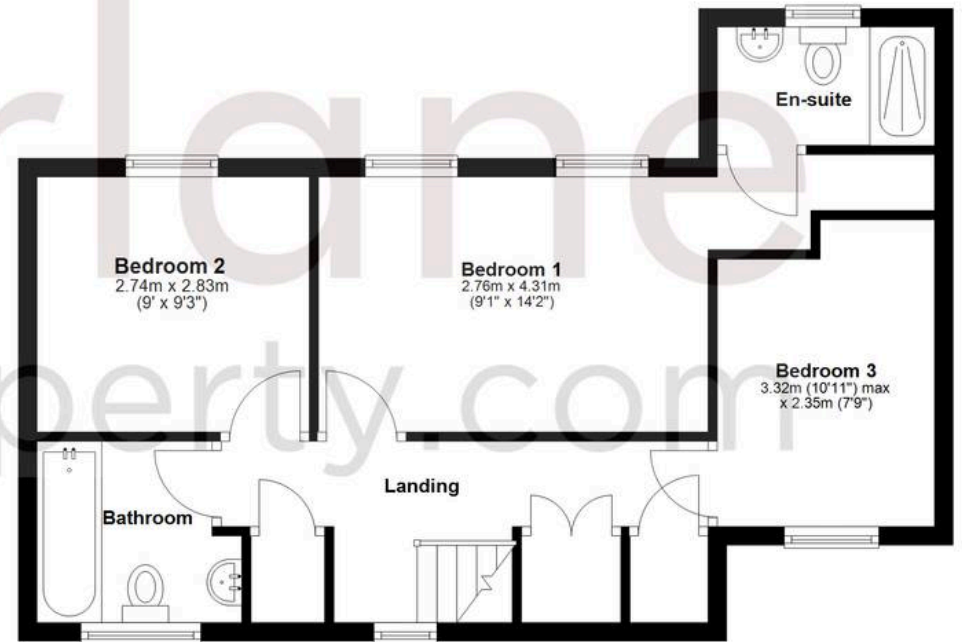
Ground Floor

Approx. 67.9 sq. metres (731.1 sq. feet)



First Floor

Approx. 47.7 sq. metres (513.3 sq. feet)



Total area: approx. 115.6 sq. metres (1244.4 sq. feet)

Agents Note: Whilst every care has been taken to prepare these sales particulars, they are for guidance purposes only. All measurements are approximate and for general guidance purposes only and whilst every care has been taken to ensure their accuracy, they should not be relied upon and potential buyers are advised to recheck the measurements.