

Gibbs Close

Harpenden, AL5 1FA

Beautifully presented three bedroom, end-terrace home of circa 1,435 sq ft with private rear garden in this modern development, moments from both the High Street and the Common and a short walk to the station. Additional benefit of two parking spaces (one to front of property and one underground) and a lockable store container. ****CHAIN FREE****

Guide price £1,195,000

Gibbs Close

Harpenden, AL5 1FA



- End-terrace three bedroom house
- Private south-facing rear garden
- Short walk to the station
- **CHAIN FREE**
- Prime Central location
- Service Charge approx £1650 pa for garage and grounds
- Moments from both the High Street and the Common
- Circa 1,450 sqft of versatile accommodation
- Two allocated parking spaces (one above and one below ground)
- Council Tax Band F

Entrance Hall

11'5" x 9'5" (3.48 x 2.89)

Kitchen/Living Room

21'10" x 20'8" (6.66 x 6.32)

Cloakroom

Bedroom Two

15'3" x 11'2" (4.67 x 3.41)

En-suite with shower

Utility Cupboard

Bedroom One

18'10" x 16'7" (5.75 x 5.08)

En-suite with shower

Landing

Bathroom

Dressing Room/Bedroom Three

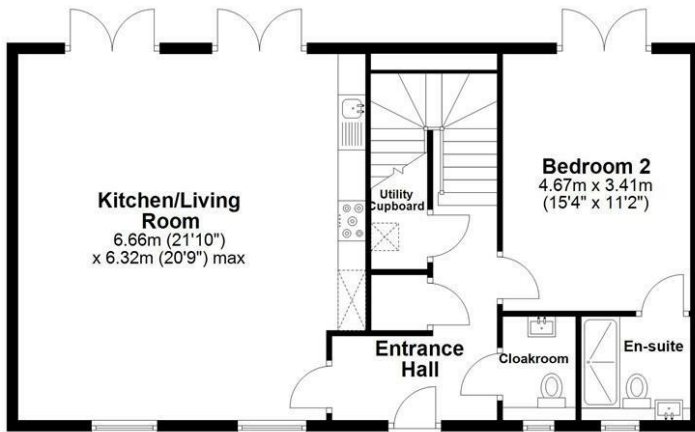




Floor Plan

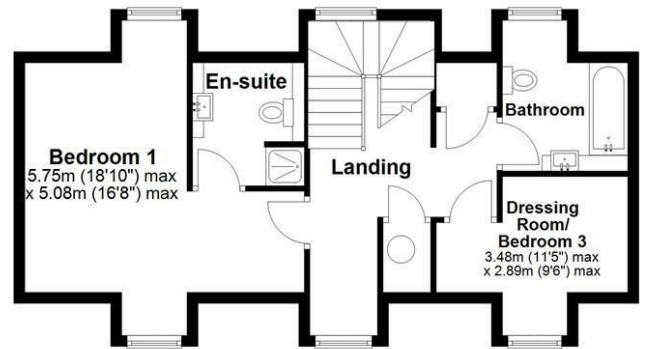
Ground Floor

Approx. 81.4 sq. metres (875.7 sq. feet)



First Floor

Approx. 52.0 sq. metres (559.8 sq. feet)



Total area: approx. 133.4 sq. metres (1435.6 sq. feet)

Sketch layout only. Not to scale. Plan produced for Whittaker & Co.

Plan produced using PlanUp.

These particulars, whilst believed to be accurate are set out as a general outline only for guidance and do not constitute any part of an offer or contract. Intending purchasers should not rely on them as statements of representation of fact, but must satisfy themselves by inspection or otherwise as to their accuracy. No person in this firm's employment has the authority to make or give any representation or warranty in respect of the property.

