



Watery Lane, Shipston-On-Stour, CV36 4RS

**SHELDON
BOSLEY
KNIGHT**

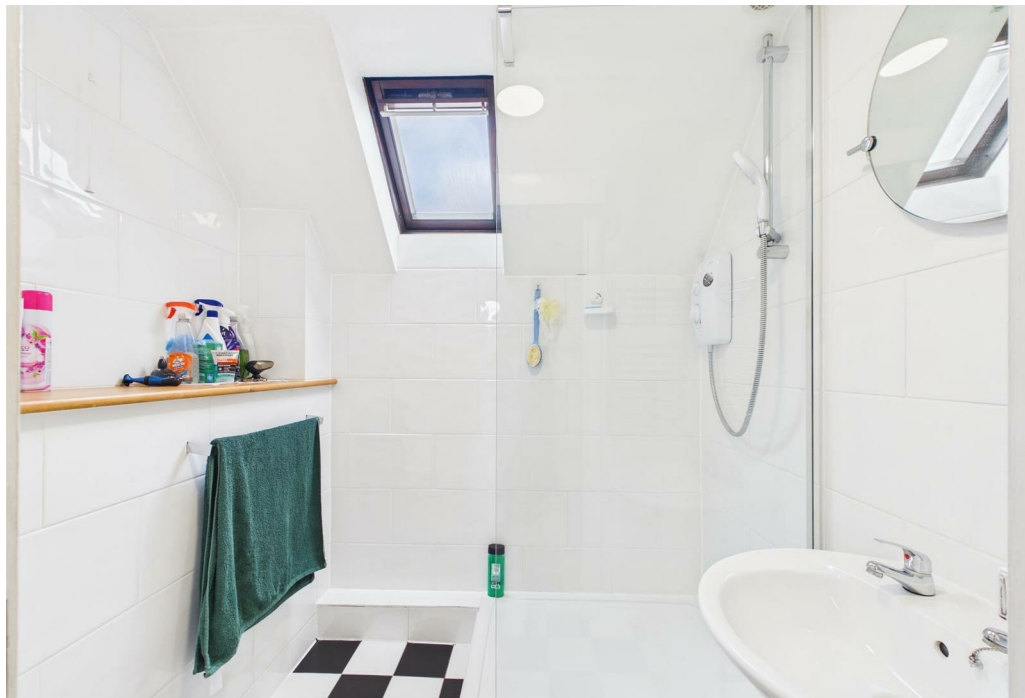
LAND AND
PROPERTY
PROFESSIONALS

Property Description

*** DEPOSIT ALTERNATIVE AVAILABLE

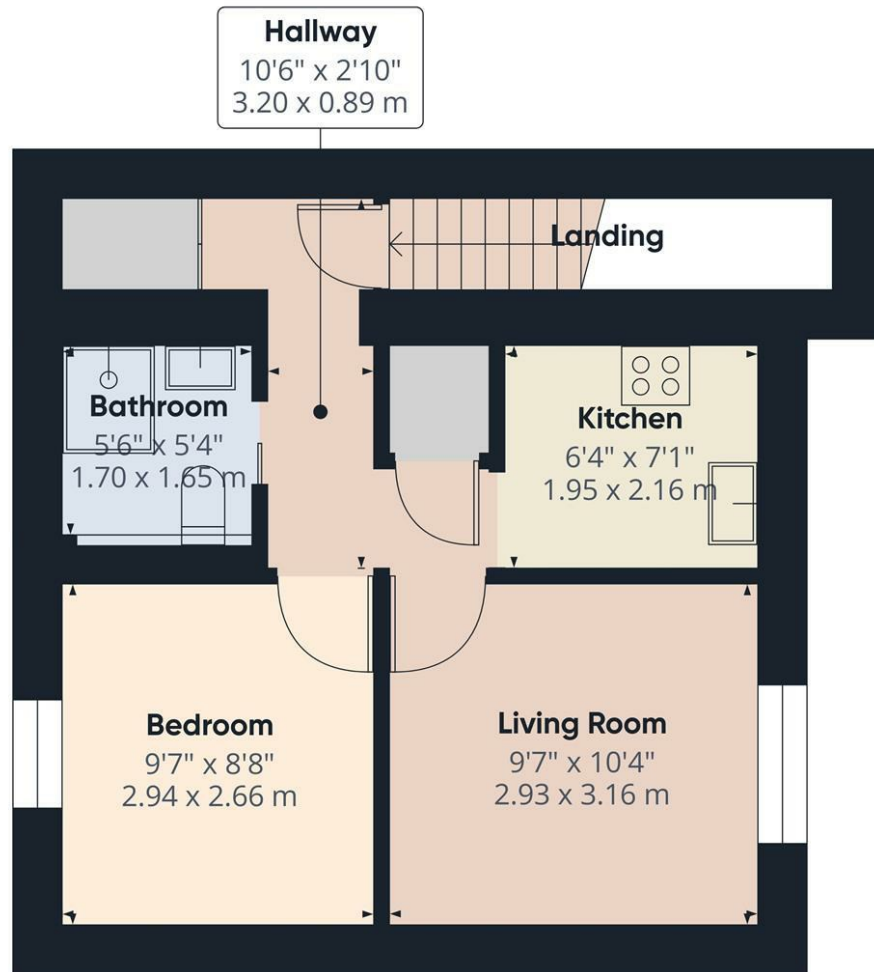
*** A well-presented furnished apartment with its own private entrance, ideally located within easy walking distance of Shipston's charming town centre. The accommodation offers a welcoming private entrance leading to stairs up to the first floor, complete with useful overhead storage. The modern kitchen is fully equipped with an oven, washing machine, fridge/freezer, and a convenient breakfast bar, perfect for casual dining. The bright and comfortable living room features a stylish corner sofa, creating a great space to relax. The double bedroom benefits from built-in overhead cupboards, providing ample storage, while the contemporary shower room is complemented by an additional built-in cupboard off the hallway. Energy Rating: C. Council Tax Band: B





Key Features

- *** DEPOSIT ALTERNATIVE AVAILABLE ***
- Shipston on Stour
- 1 Bedroom
- First floor apartment
- Furnished
- Own private entrance
- Allocated parking space
- Council Tax Band B
- Energy Rating C
- Available 16th June 2026



Approximate total area⁽¹⁾
328 ft²
30.5 m²

(1) Excluding balconies and terraces

Calculations reference the RICS IPMS 3C standard. Measurements are approximate and not to scale. This floor plan is intended for illustration only.

GIRAFFE360

£700 PCM