



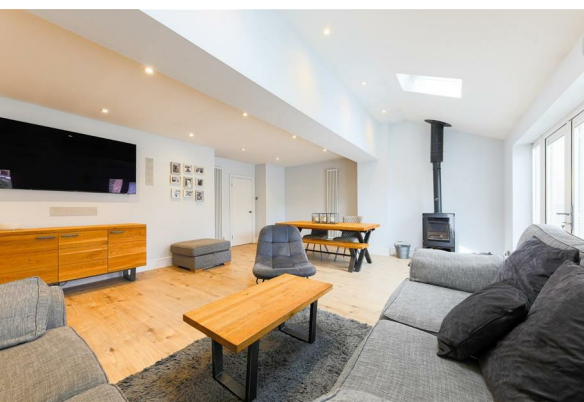
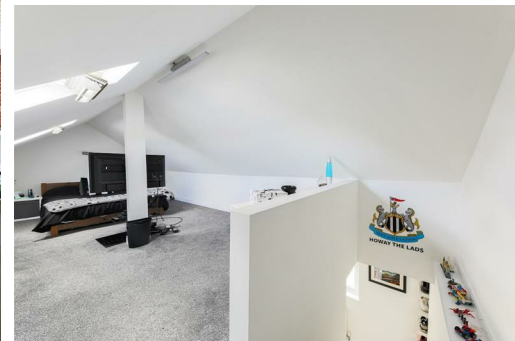
# Alexander Hudson Estates

---

Sales Particulars

# Alexander Hudson Estates

Bannister Drive, NE12



# The Property

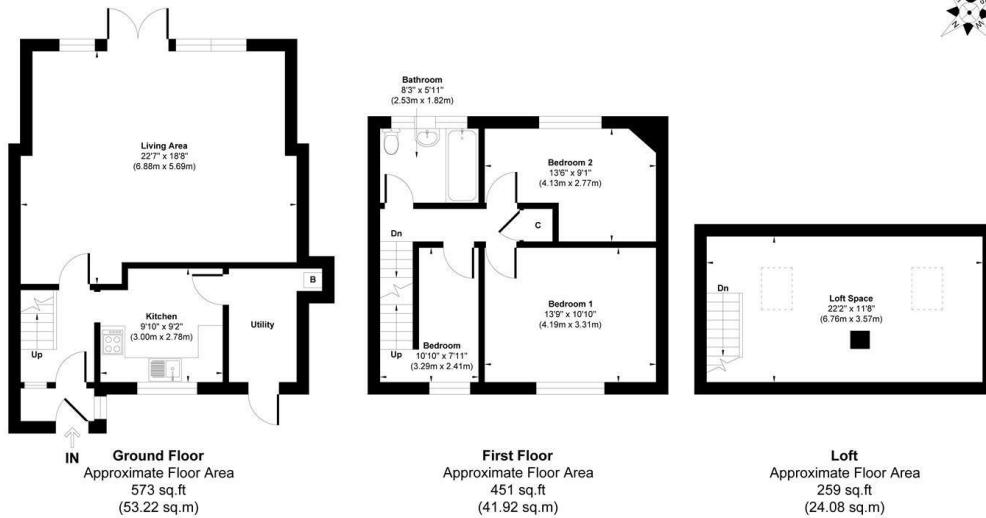
Alexander Hudson Estates are delighted to present this beautifully presented three bedroom terraced family home, offering spacious and versatile accommodation across three floors.

The ground floor features a bright, open-plan living and dining room with French doors opening onto the rear garden, alongside a fitted kitchen and separate utility room.

The first floor comprises two generous double bedrooms and a modern family bathroom, while the converted loft provides an excellent third bedroom or flexible space, ideal as a home office, playroom or guest room.

To the rear, a private and low-maintenance garden featuring a generous paved patio perfect for outdoor dining, entertaining, or relaxing.

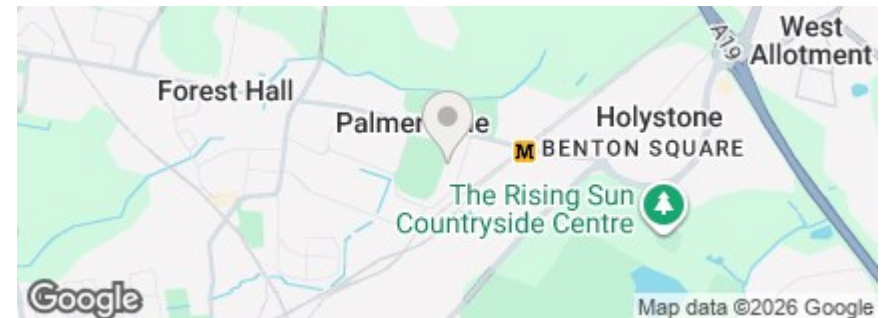
Palmersville is a well-connected suburb in North Tyneside with historic ties to the area's mining past. It offers a mix of housing, local shops, and cafés, with a friendly atmosphere for families and professionals. Palmersville Metro Station provides direct links to Newcastle city centre and the coast, while the A19 and A1 ensure easy road travel. Larger shopping and leisure facilities are nearby in Killingworth, Longbenton, and Benton. Families are well served by nurseries, primary schools, and secondary schools, making Palmersville a practical and popular choice for modern living.



Approx. Gross Internal Floor Area 1283 sq. ft / 119.22 sq. m

Illustration for identification purpose only, measurements approximate and not to scale, unauthorized reproduction is prohibited. All rights reserved for Alexander Hudson Estates

Freehold  
Council Tax: A  
EPC Rating: 0





---

Alexander Hudson Estates  
The Printworks  
20 Arrow Close  
NE12 6QN

0191 268 7433  
[sales@alexanderhudson.co.uk](mailto:sales@alexanderhudson.co.uk)