



Brightfield Road, SE12

£625,000

Beautifully presented two double bedroom Victorian terraced house perfectly situated close to Blackheath Village, Manor House Gardens, and the vibrant amenities of Lee Green. This exceptional home features generously proportioned living spaces including an entrance hall, a cosy lounge with an attractive feature fireplace, and a dining room that flows seamlessly into a contemporary kitchen. Upstairs, you'll find two spacious double bedrooms and a well-appointed bathroom. Additional benefits include double glazing, gas central heating, and a carefully maintained rear garden with a decked area that enjoys peaceful views over the River Quaggy.

Features

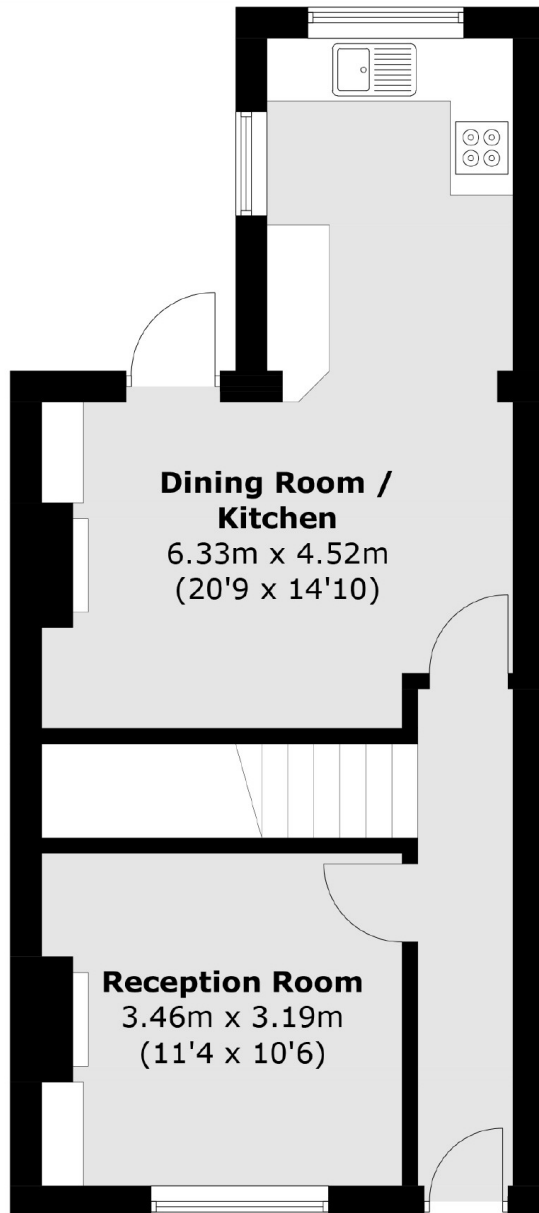
- Two Double Bedrooms
- Victorian Terrace Home
- Two Reception Rooms
- Enclosed Rear Garden
- Backing On To The River Quaggy
- Ideal First Home



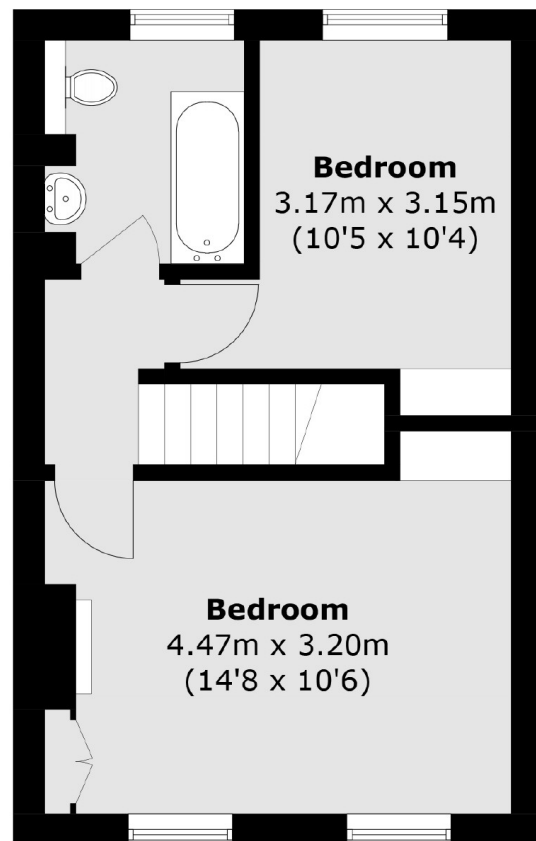
Brightfield Road, SE12



Brightfield Road,
London, SE12



Ground Floor



First Floor

Total area (approx.): 75.7 sq. m (814.7 sq. ft)