



The Gables, Clay Close Lane, Impington,  
Cambridge, CB24 9NE

Guide price £1,100,000





# The Gables, Clay Close Lane,

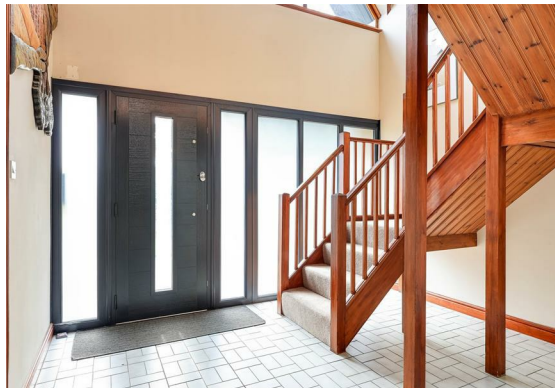
Impington, CB24 9NE

- Fantastic family house
- 5 bedrooms and 3/4 receptions
- Double garage
- No chain

A 5-bedroom detached house of 2258 sq. ft., in a fabulous location, with a double garage, garden, no chain, and situated perfectly for access to the village college.

This impressive, non-estate home offers spacious accommodation perfect for a large family. It includes a large reception hall with a galleried landing above. The living room has doors to the garden and a recently installed gas fire, and double doors open to the study/snug. The kitchen has been refitted and has integrated appliances, including a dishwasher and fridge. off the kitchen is a breakfast room with a bay window to the front aspect. There is a useful utility room which has a door to the garden, a separate dining room, a cloakroom and a WC.

On the first floor, there is a large landing off which are five bedrooms, four are doubles, and the main room has an en-suite shower room and WC. The family bathroom has a shower over the







bath and a WC.

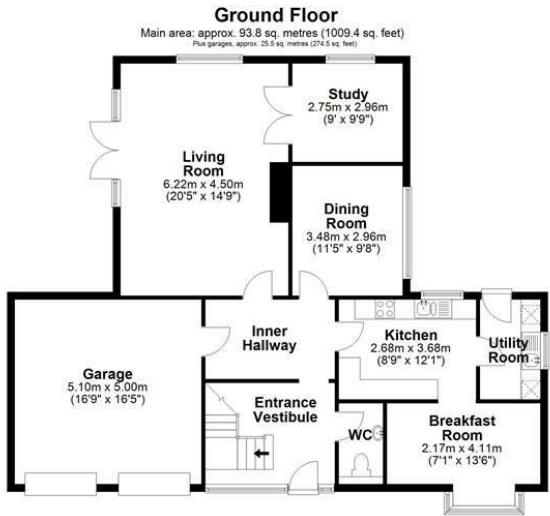
The house has gas central heating, and recently installed double-glazed windows and doors.

Outside, at the front, there is a wide lawned garden and a block-paved driveway for parking and access to the double garage with twin doors and a door to the house. Side access leads to the rear garden, which is enclosed by fencing and mainly lawned. There are two patio areas, flower beds, and a timber shed.

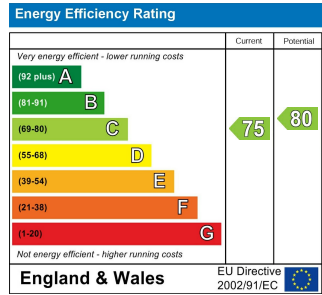
What3words: ///found.line.blaze







### Energy Efficiency Graph



Tenure: Freehold  
Council tax band: G

These particulars, whilst believed to be accurate, are set out as a general outline only for guidance and do not constitute any part of an offer or contract. Intending purchasers should not rely on them as statements of representation of fact, but must satisfy themselves by inspection or otherwise as to their accuracy. No person in this firm's employment has the authority to make or give any representation or warranty in respect of the property.

**Cambridge Victoria**  
154-156 Victoria Road, Cambridge CB4 3DZ  
01223 439 888 [theteam@grayandtoynbee.com](mailto:theteam@grayandtoynbee.com)

**Cambridge South**  
Adkins Corner, Perne Road, Cambridge CB1 3RU  
01223 439 555 [theteam@grayandtoynbee.com](mailto:theteam@grayandtoynbee.com)

**Waterbeach**  
17 High Street, Waterbeach, CB25 9JU  
01223 949 444 [waterbeach@grayandtoynbee.com](mailto:waterbeach@grayandtoynbee.com)