

Hereford Gardens

Pinner • Middlesex • HA5 5JR

PCM: £3,500 PCM



coopers
est 1986



Coopers are DELIGHTED to present to the market this BRAND NEW FOUR/FIVE bedroom DETACHED bungalow, situated in a HIGHLY SOUGHT AFTER location within WALKING DISTANCE to several local High Street shops and a variety of TRANSPORT LINKS. Boasting an IMMACULATE FINISH throughout, this carefully designed EXECUTIVE bungalow briefly comprises: MODERN fitted kitchen/dining area with bi-folding doors to PRIVATE garden with patio area, four spacious bedrooms, large inviting entrance hall and utility room.

Offered Unfurnished and Available in August.

Local Authority: London Borough of Harrow
Council Tax: Band E

Detached bungalow

Four/Five bedrooms

Beautiful private garden

Close to Pinner Station

Off street parking

Luxury bathrooms

Walking distance to local amenities

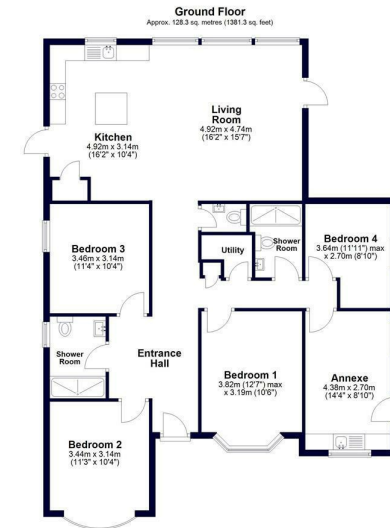
Stylish kitchen

Unfurnished

Available in August

Available Date

22nd August 2026



Total area: approx. 128.3 sq. metres (1381.3 sq. feet)



Whilst every effort has been made to ensure the accuracy of this floor plan, measurements of floors, windows, rooms and other items are approximate and no responsibility is taken for any errors. This plan is for illustrative purposes only and should be used as such by any prospective purchaser.
©Property Pnl. Produced on behalf of Coopers Residential.



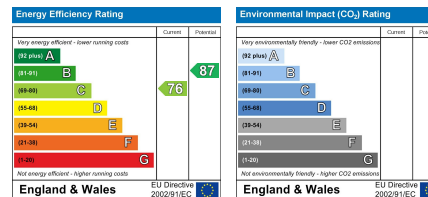
coopers
est 1986

0208 017 6000

**18 Bridge Street, Pinner,
Middlesex, HA5 3JF**

pinner@coopersresidential.co.uk

CoopersResidential.co.uk



Important Notice: These particulars, whilst believed to be accurate are set out as a general outline only for guidance and do not constitute any part of an offer or contract. Intending purchasers should not rely on them as statements or representation of fact, but must satisfy themselves by inspection or otherwise has the authority to make or give any representation or warranty in respect of the property.