



51 Stewart Road, Sheffield S11 8XS

Saxton Mee

Lettings

51 Stewart Road

Per Calendar Month

£850 Per Calendar

****DEPOSIT FREE OPTION AVAILABLE**** Available to let is this stunning one-bedroom end terraced property which is located in the fashionable Sharrow Vale area close to shops, restaurants and amenities and is ideal for the professional couple.

Beautifully presented throughout and comprising: Lounge with feature fireplace, kitchen with oven, hob, and under counter fridge. To the first floor, master bathroom with a separate shower and bath, master bedroom with built-in wardrobe. The property also benefits from gas central heating.

Restrictions: Smokers. Energy Efficiency Rating D. Council Tax Band A

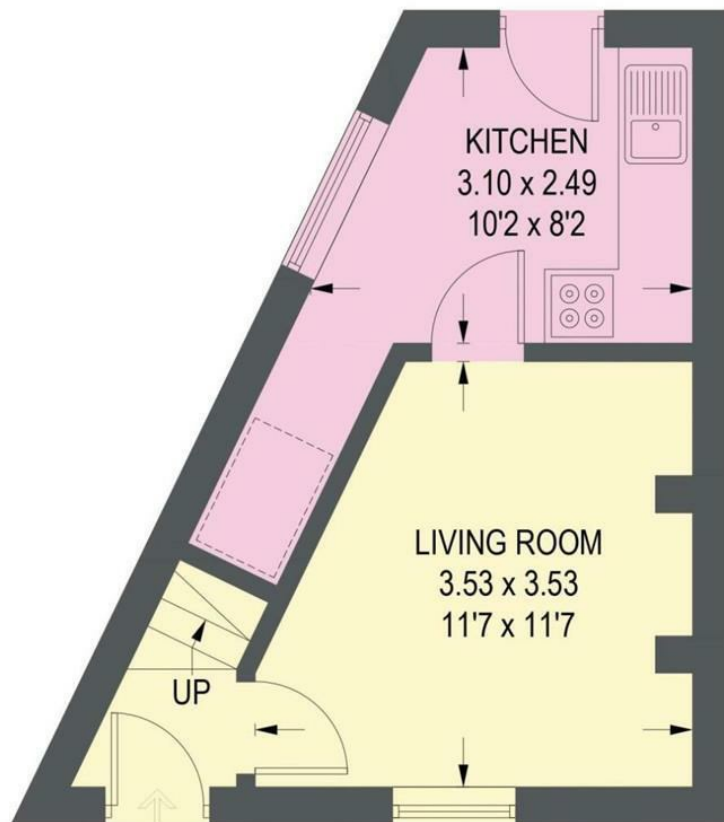




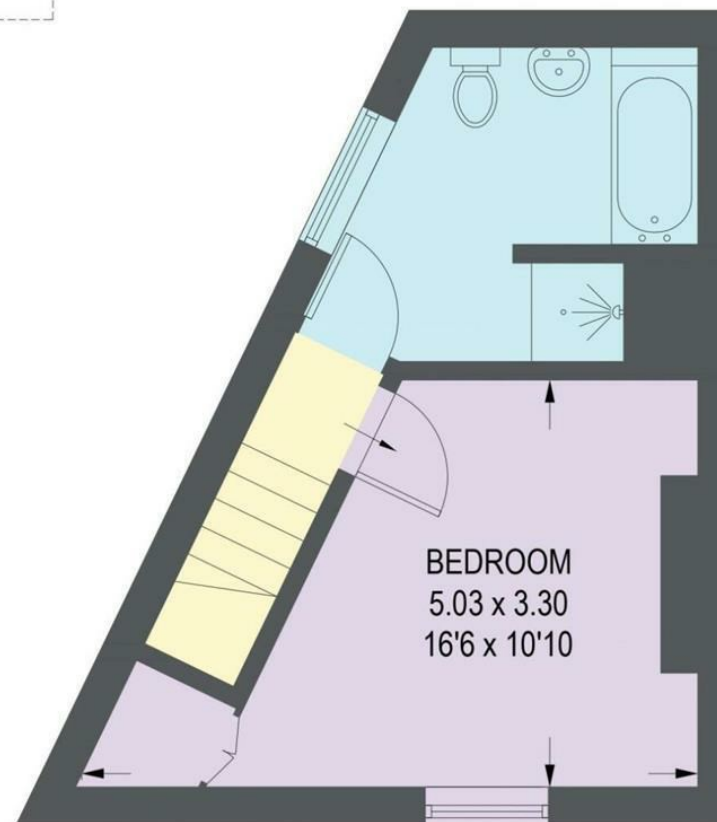
51 STEWART ROAD

APPROXIMATE GROSS INTERNAL AREA = 43.5 SQ M / 468 SQ FT

 = REDUCED HEADROOM BELOW 1.5m / 5'0



GROUND FLOOR
21.9 SQ M / 236 SQ FT



FIRST FLOOR
21.6 SQ M / 232 SQ FT

Illustration for identification purposes only, measurements are approximate, not to scale.

While we endeavour to make our sales particulars fair, accurate and reliable, they are only a general guide to the property and, accordingly, if there is any point, which is of particular importance to you, please contact the relevant office. The Agents have not tested any apparatus, equipment, fittings or services and so cannot verify they are in working order. The buyer is advised to obtain verification. Please note all the measurement details are approximate and should not be relied upon as exact. All plans, floor plans and maps are for guidance purposes only and are not to scale. Under no circumstances should they be relied upon as exact or for use in planning carpets and other such fixtures, fittings or furnishings. YOUR HOME IS AT RISK IF YOU DO NOT KEEP UP REPAYMENTS ON A MORTGAGE OR OTHER LOAN SECURED ON IT. 'A Life Assurance policy may be requested.' 'Written Quotations of credit terms available on request.'

Banner Cross
T: 0114 268 3241
E: bannercross@saxtonmee.co.uk
www.saxtonmee.co.uk

Hathersage
T: 01433 650009
E: hathersage@saxtonmee.co.uk

Bakewell
T: 01629 815307
E: bakewell@saxtonmee.co.uk

Matlock
T: 01629 828250
E: matlock@saxtonmee.co.uk



Lettings