

Property ref: 180793

## Grange Avenue, Reading, RG6 1DJ

£875 PCM

**HASLAM'S**  
Lettings



A very well presented top floor studio apartment located to the east of Reading town centre. The property has excellent transportation links and is also within walking distance of Royal Berkshire Hospital, Reading University and the town centre.  
Reading Borough Council tax band A.

Broadband/Mobile Info: Connections available. For an indication of specific speeds and supply of Broadband and Mobile, we advise applicants go to the Ofcom website Broadband and Mobile Coverage Checker.

**Available 07/09/2026**

\*Fees For Assured Shorthold Tenancies: when you rent a property from us you will be required to pay a sum equivalent to one weeks' rent for a holding deposit. Upon successful application, this amount will be off set against your first months' rent. You will also be required to pay a security deposit equivalent to 5 weeks' rent which will be held and protected in line with Deposit legislation. For more information about our fees please visit: [www.haslams.net](http://www.haslams.net)  
Fees for all other tenancies (Non Housing Act Tenancies / Company Lets): when you rent a property from us we will charge you a one-off fee per property. This charge is the equivalent of 15 days of the monthly rental charge (+VAT) with a minimum fee of £450 (inc.VAT) up to a maximum of £650 (inc.VAT). Other fees may apply depending on your circumstances.

- Second floor studio apartment; Single bed (single occupants only)
- Separate kitchen with appliances
- Gas central heating; EPC rating E
- Rent includes all utilities apart from council tax (council tax paid separately by Tenant)
- Permit parking available
- Furnished; Managed by LANDLORD

**0118 960 1055**

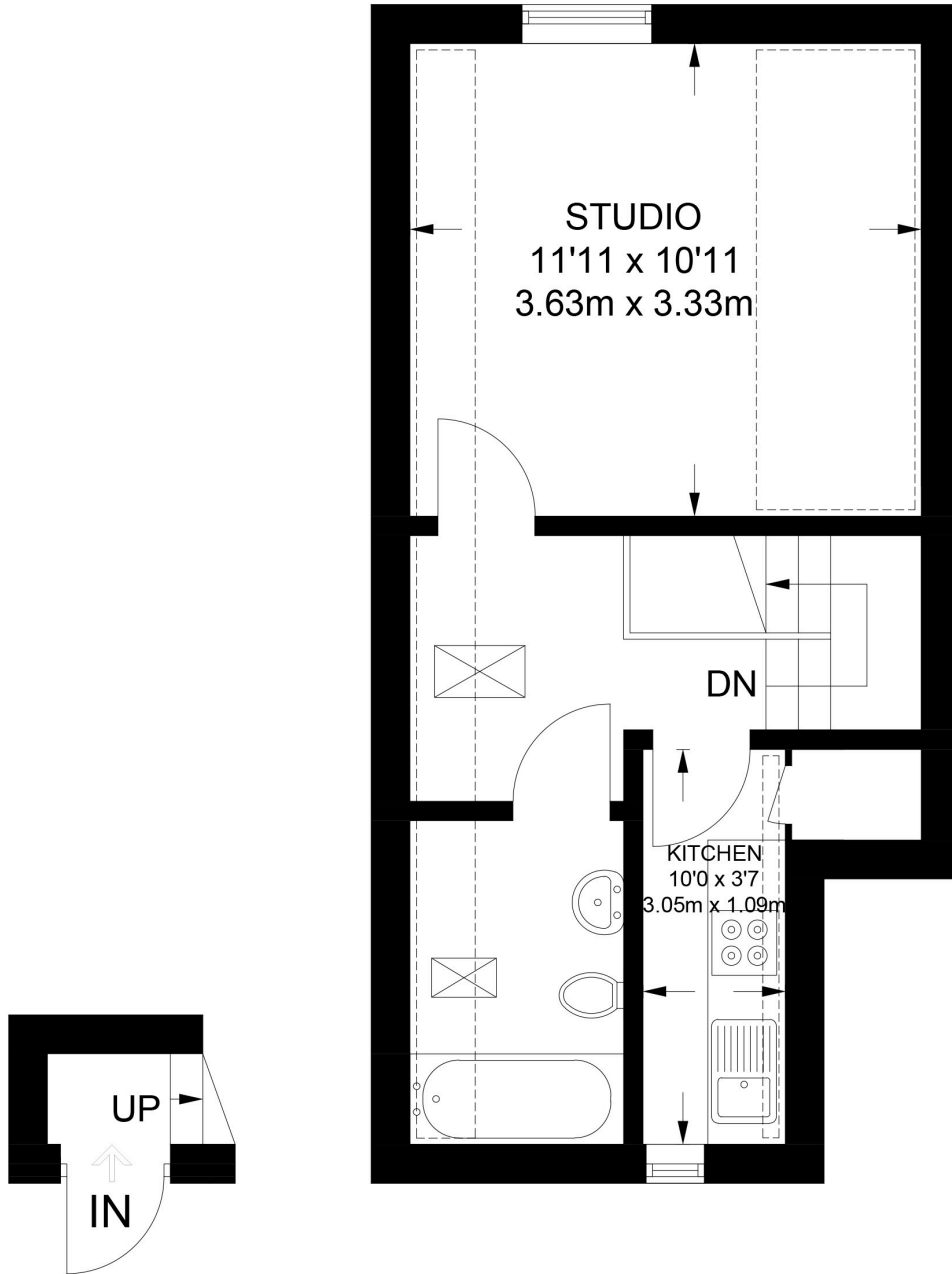
**[lettings@haslams.net](mailto:lettings@haslams.net) [www.haslams.net](http://www.haslams.net)**

**Haslams Estate Agents Ltd, 159 Friar Street, Reading, Berkshire, RG1 1HE**





= REDUCED HEADROOM BELOW 1.5M / 5'0



**FIRST FLOOR**  
**11 SQ FT / 1.0 SQ M**

**SECOND FLOOR**  
**335 SQ FT / 31.1 SQ M**

**APPROXIMATE GROSS INTERNAL AREA**  
**346 SQ FT / 32.1 SQ M**

This plan has been drawn for illustrative and identification purposes only.