



4 Wharf End | Manchester | M17 1HY

**Asking Price £225,000**

The  
**GOOD  
ESTATE**  
AGENCY

4 Wharf End |  
Manchester | M17 1HY  
Asking Price £225,000

2 BED, 2 BATH APARTMENT. Welcome to No. 1 Old Trafford, an exceptional two-bedroom apartment situated in the heart of Manchester's vibrant landscape. This newly completed development offers a modern living experience, perfectly positioned next to the iconic Salford Quays and the legendary home of Manchester United Football Club.

Perched on the 8th floor, this spacious apartment spans approximately 693 square feet and features an inviting entrance hall that leads to a well-designed open plan living area. The master bedroom boasts an en suite shower room, providing a private retreat, while the second double bedroom is equally generous in size. The main bathroom, complete with a shower over the bath, adds to the apartment's appeal.

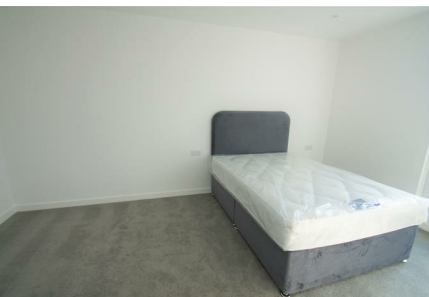
Residents of No. 1 Old Trafford enjoy the convenience of a 24-hour concierge service, ensuring a secure and comfortable living environment. The residential podium offers a pleasant outdoor space, perfect for relaxation.

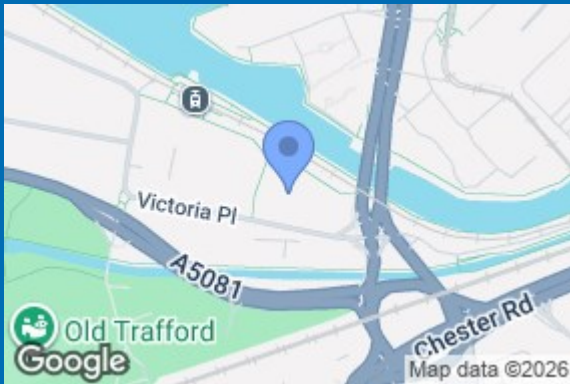
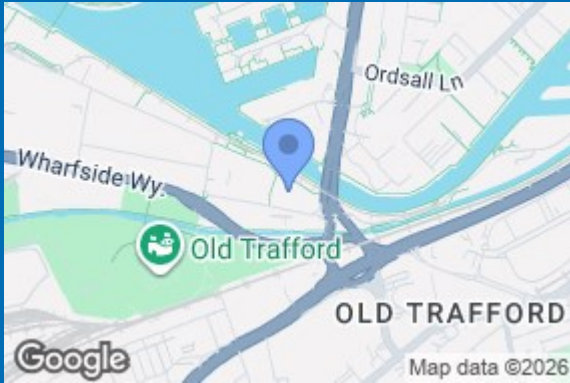
This property is ideally located, just three tram stops away from Manchester's bustling Deansgate, making it easy to access the city's many amenities. The proximity to Media City UK and the picturesque waterside of Salford Quays enhances the lifestyle on offer.

Currently let for £1,300 per calendar month until August 26, 2026, this apartment presents an attractive investment opportunity with a rental yield of 6.9%. Whether you are looking for a new home or a savvy investment, this apartment at No. 1 Old Trafford is not to be missed. EWS1 Form in place.

- TWO DOUBLE BEDROOMS
- SPACIOUS OPEN PLAN LIVING & DINING ROOM
- BATHROOM & EN SUITE
- 24 HOUR CONCIERGE & RESIDENTS AMENITIES
- WATERSIDE DEVELOPMENT
- 8TH FLOOR
- 700 SQ FT
- COMMUNAL GARDENS
- CURRENTLY LET FOR £1,300PCM UNTIL 26/8/26, ACHIEVING A RENTAL YIELD OF 6.6%
- LOCATED NEXT TO OLD TRAFFORD, MEDIA CITY UK & SALFORD QUAYS







Energy Efficiency Rating		Current	Potential
Very energy efficient - lower running costs			
(12 plus) A			
(81-91) B		84	84
(69-80) C			
(55-68) D			
(39-54) E			
(17-38) F			
(1-20) G			
Not energy efficient - higher running costs			
England & Wales		EU Directive 2002/91/EC	

68 Quay Street  
 Manchester  
 M3 3EJ  
 0161 513 2034  
 hello@thegea.co.uk  
 www.thegea.co.uk