

LEASEHOLD - SHARE OF  
FREEHOLD



Maisonette

# 12 GROSVENOR COURT, LONDON, N14 4EG

Offers Over

# £425,000

## FEATURES

- Chain Free
- Two bedrooms
- Private Garden
- Drive/Off Street Parking
- Share of Freehold with long Lease
- Two Bathrooms
- Garage
- School Catchment



# RASH & RASH

# 2 Bedroom Maisonette located in London

\*\* Chain Free \*\* A beautifully presented two bedroom, two bathroom first floor maisonette tucked away in a peaceful cul-de-sac in the heart of Southgate, combining contemporary style with comfort and convenience.

From the moment you step inside, this impressive home feels bright and inviting. The spacious open plan kitchen and living area is bathed in natural light, creating a perfect space for relaxing or entertaining. The modern kitchen is sleek and well-designed, while the generous living area flows seamlessly onto the rest of the home. Two bedrooms, with the principal bedroom featuring a luxurious en-suite wet room, complemented by a stylish family bathroom.

Outside, you'll find your own private garden, ideal for summer evenings or morning coffee, along with a garage and off-street parking. The property also comes with the added advantage of a Share of Freehold, providing peace of mind for the future.

Perfectly positioned on a tree-lined cul-de-sac just off the desirable Avenue Road, Grosvenor Court offers the best of Southgate living. You're within easy walking distance of Southgate Underground Station (Piccadilly Line) and the bustling High Street, with its charming cafés, patisseries, and boutiques. For outdoor lovers, Trent Park and Oakwood Park are close by, offering beautiful green spaces to unwind. The area is also renowned for its excellent local schools, making this an ideal home for both professionals and young families.

Call us on

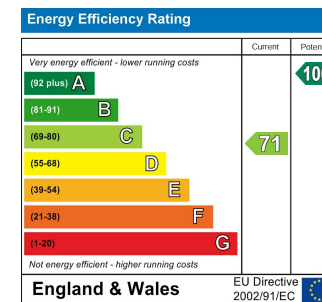
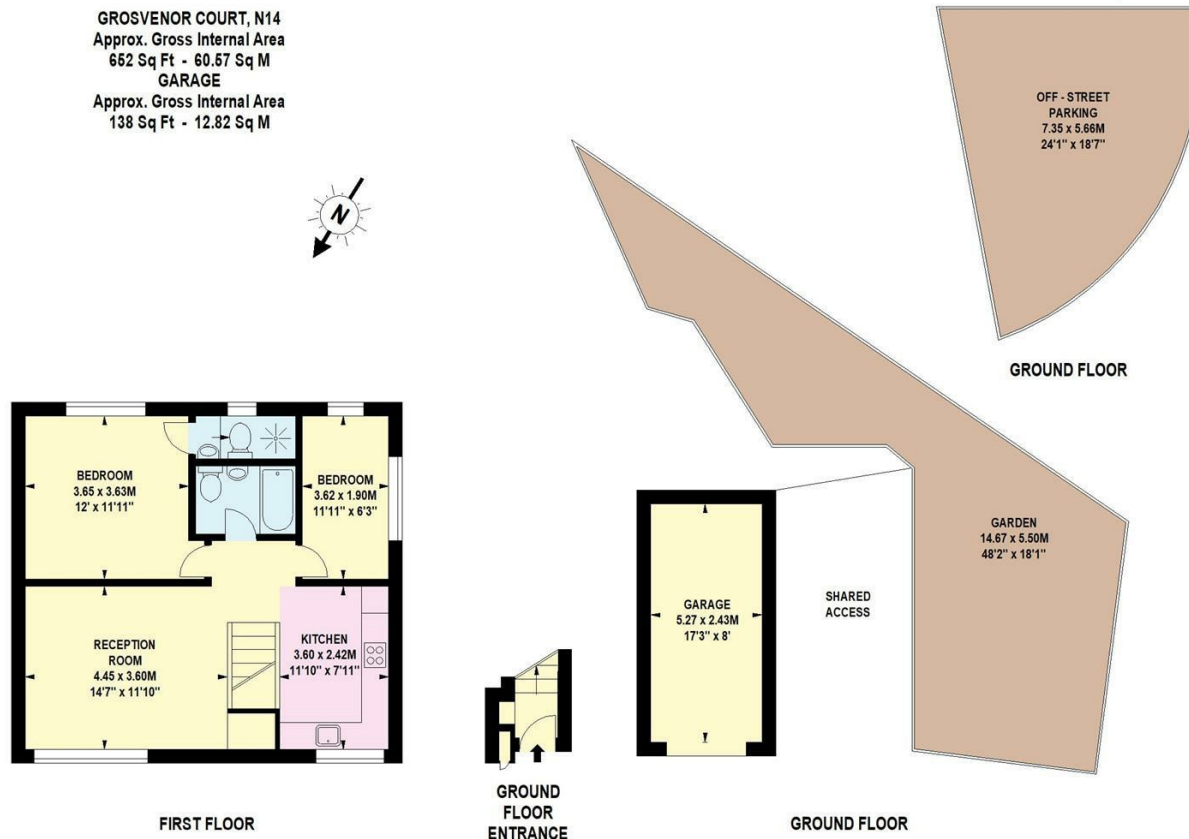
**02088822828**

[info@rashandrash.com](mailto:info@rashandrash.com)

<https://www.rashandrash.com/>

**Council Tax Band**

**D**



Agents Note: Whilst every care has been taken to prepare these particulars, they are for guidance purposes only. All measurements are approximate and are for general guidance purposes only and whilst every care has been taken to ensure their accuracy, they should not be relied upon and potential buyers are advised to recheck the measurements.

