

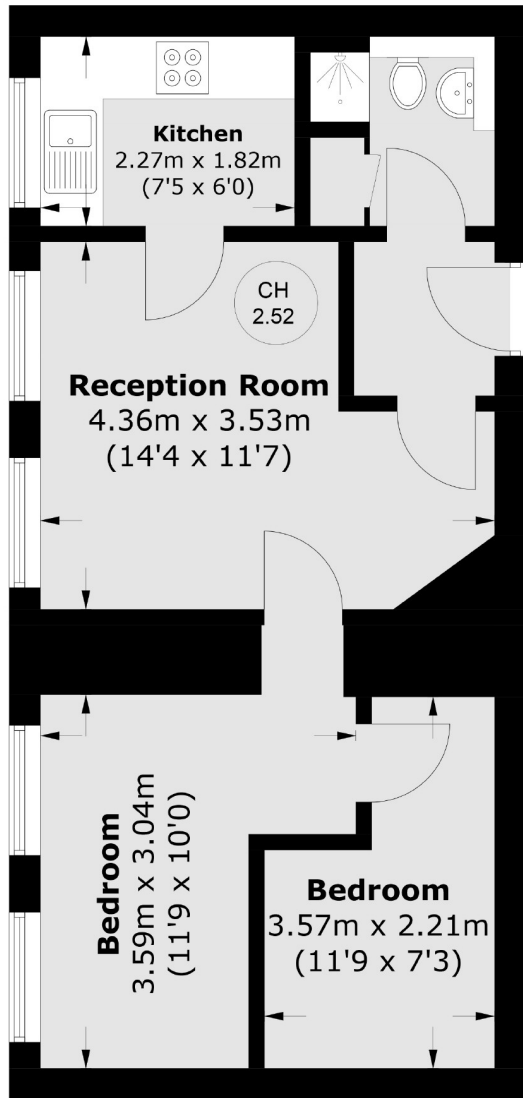


Jermyn Street

Mayfair SW1Y



A modern and well presented one bedroom apartment set within a lovely period block benefiting from day porter in the heart of St. James'.



Total area (approx.): 43.3 sq. m (466.1 sq. ft)



Jermyn Street, well known for its established gentleman's outfitters, art galleries, hotels, and restaurants, is excellently located close to Piccadilly and St James Park. Dating from 1664, it retains a feeling of traditional charm whilst affording modern convenience.

FEATURES

- One Double Bedroom
- Built-In Storage
- Secure Portered Building
- Large Reception Room
- Lift
- Excellent Location

Price: £750 Per week



WETHERELL

MAYFAIR'S FINEST PROPERTIES

102 Mount Street • London • W1K 2TH
 T: 020 7529 5588 E: rentals@wetherell.co.uk

wetherell.co.uk

We aim to make our particulars both accurate and reliable. However they are not guaranteed; nor do they form part of an offer or contract. If you require clarification on any points then please contact us, especially if you're traveling some distance to view. Please note that appliances and heating systems have not been tested and therefore no warranties can be given as to their working order. Energy Rating: E

NO ONE KNOWS MAYFAIR BETTER THAN WETHERELL