



64 Bradley Road
Trowbridge BA14 0RA

Monthly Rental Of £1,600



Wrights Residential, 24 Fore Street , Trowbridge, BA14 8ER
Phone: 01225 755553, Email: enquiries@wrightsresidential.co.uk
www.wrightsresidential.co.uk

Detached three/four bedroom chalet bungalow

Spacious lounge

Separate utility room

Second bedroom with shower enclosure and en-suite W.C.

Flexible accommodation with family room/fourth bedroom

Modern kitchen/dining room

Principal bedroom with en-suite shower room

Additional ground floor and first floor shower rooms

Wrights Residential are delighted to bring to the market this spacious and versatile three/four bedroom detached chalet bungalow, conveniently situated within easy reach of local amenities, primary and secondary schools, and Trowbridge College. The well presented accommodation offers flexible living space throughout and comprises an entrance porch, spacious lounge, modern kitchen/dining room, utility room, shower room, and a generous family room which could alternatively be utilised as a fourth double bedroom. On the first floor are three further double bedrooms, including a principal bedroom with en-suite shower room. The second bedroom benefits from an en-suite W.C. and shower enclosure, whilst a separate shower room serves the remaining

The property comprises

Ground Floor

Entrance Porch

With PVCu front door and radiator.

Lounge *25' 9" x 14' 5" (7.85m x 4.39m) max*

With wood laminate flooring, two radiators, feature fireplace and two PVCu double glazed bay windows to the front.

Hallway

With wood laminate flooring, radiator and stairs to the first floor.

Kitchen/Diner *8' 10" x 16' 10" (2.69m x 5.13m)*

With wood laminate flooring, radiator, a range of eye level and base units, worktops with splashbacks, integrated electric oven with ceramic hob and extractor hood over, inset sink and drainer unit, space for fridge/freezer, wall mounted gas boiler and washing machine and PVCu double glazed window to the side.

Utility room

With wood laminate flooring, a range of eye level and base units, worktop with splashbacks, space for washing machine and, obscured PVCu double glazed window to the rear and PVCu door to the rear garden.

Family Room/Bedroom 4 *10' 10" x 11' 4" (3.29m x 3.46m)*

With wood laminate flooring, radiator and PVCu French doors opening onto the rear garden.

Shower Room

With suite comprising shower enclosure with mains shower, W.C, hand basin, radiator and extractor fan.

First Floor

Landing

Bedroom 1 *13' 6" x 9' 9" (4.11m x 2.96m)*

With radiator, built in wardrobe and PVCu double glazed window.

En-suite

With suite comprising shower enclosure with electric shower, W.C and hand basin, radiator and extractor fan.

Bedroom 2 *9' 5" x 10' 11" (2.87m x 3.32m)*

With radiator, shower enclosure, en-suite cloakroom and PVCu double glazed window.

Bedroom 3 *11' 11" x 13' 8" (3.64m x 4.17m) max*

With radiator, built in shelving and two PVCu double glazed windows.

Shower Room

With suite comprising shower enclosure with electric shower, W.C and hand basin, radiator, extractor fan and obscured PVCu double glazed window.

Externally

To the front

Gated driveway parking for 2/3 vehicles (with access to one other property).

To the rear

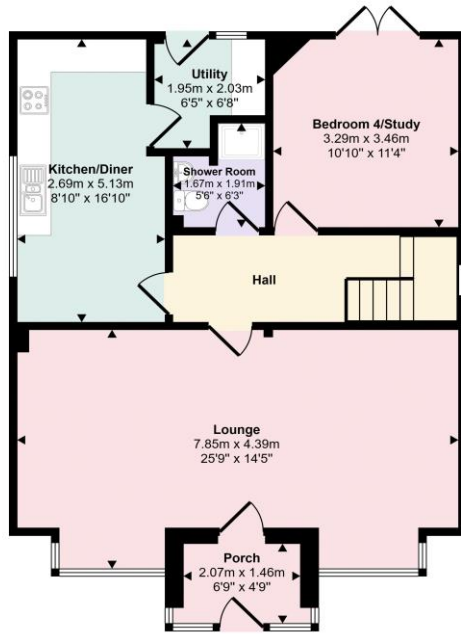
A generous enclosed rear garden comprising a large paved patio area and a lawned section, enclosed by timber fencing and stone walling. Further benefits include raised planting beds, a timber garden shed and gated side access.

Council tax

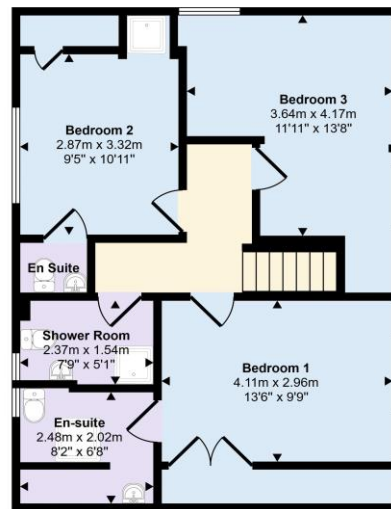
The property is in council tax band D.



Approx Gross Internal Area
139 sq m / 1494 sq ft



Ground Floor
Approx 79 sq m / 845 sq ft



First Floor
Approx 60 sq m / 649 sq ft

This floorplan is only for illustrative purposes and is not to scale. Measurements of rooms, doors, windows, and any items are approximate and no responsibility is taken for any error, omission or mis-statement. Icons of items such as bathroom suites are representations only and may not look like the real items. Made with Made Snappy 360.