



Pump House Crescent, TW8

£4,500 Per week

Modern and spacious, three-bedroom apartment with an open-plan kitchen offering stunning views of the River Thames, underground parking, a private balcony, a concierge and a residents gym.

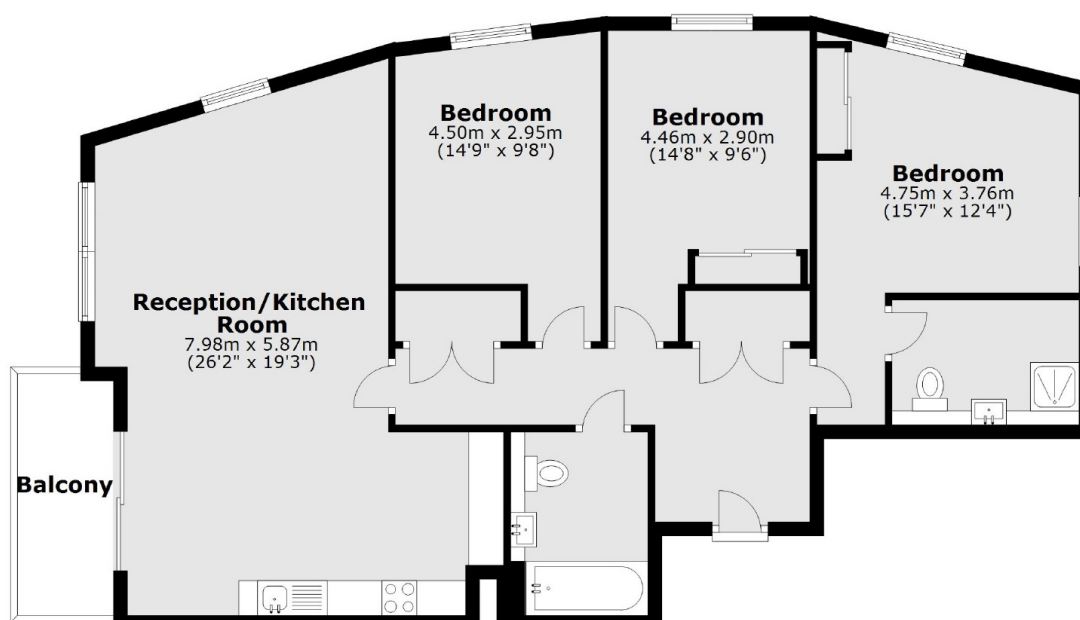
Pump House Crescent is located in the Kew Bridge West Development, close to Kew Bridge station and Gunnersbury underground station. You are also nearby the bars, restaurants and shops of Chiswick, the popular Strand On The Green, and Kew Gardens.

Features

- Three Bedrooms
- Riverside Development
- Underground Parking
- Private Balcony
- Residents Gym
- Concierge Office

Pump House Crescent, Brentford, TW8

Twelfth Floor



Total area: approx. 96.6 sq. metres (1039.8 sq. feet)