



**City View Apartments, London Road, Southampton SO15 2PJ**

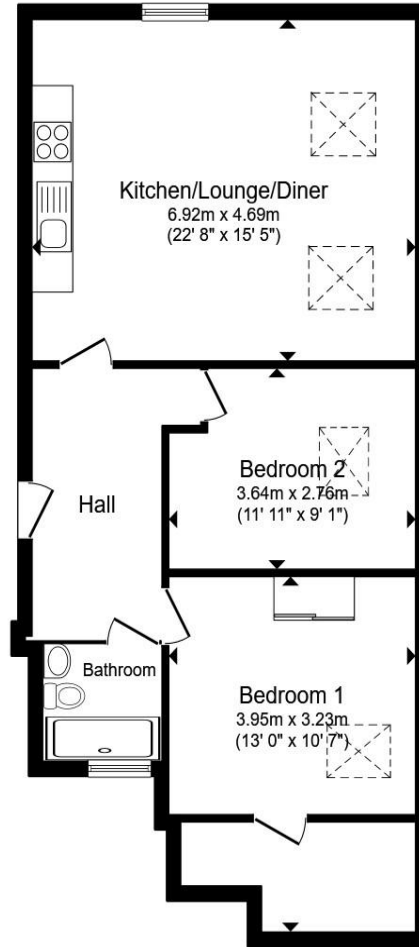
**welcome to**

**City View Apartments, London Road, Southampton**

Modern 2-Bedroom Apartment in City View, London Road, Southampton

Located in the highly convenient City View development on London Road, this stylish two-bedroom, one-bathroom apartment offers contemporary living in the heart of Southampton.





### Entrance Hall

### Kitchen/Lounge/Diner

22' 8" max x 15' 5" max (restricted height)  
 ( 6.91m max x 4.70m max (restricted height) )

### Bedroom One

13' max x 10' 7" max (restricted height) (  
 3.96m max x 3.23m max (restricted height) )

### Bedroom Two

11' 11" x 9' 1" max (restricted height) (  
 3.63m x 2.77m max (restricted height) )

### Bathroom

### Additional Information

Total floor area 64.9 m<sup>2</sup> (698 sq.ft.) approx

This floor plan is for illustrative purposes only. It is not drawn to scale. Any measurements, floor areas (including any total floor area), openings and orientation are approximate. No details are guaranteed, they cannot be relied upon for any purpose and they do not form part of any agreement. No liability is taken for any error, omission or misstatement. A party must rely upon its own inspection(s). Powered by [www.propertybox.io](http://www.propertybox.io)



welcome to

## City View Apartments, London Road, Southampton

- Secluded Penthouse Apartment (4th floor)
- Close to City Centre, Restaurants and Cafes
- Two Bedrooms
- Spacious, open plan kitchen and living area, modern appliances and furnishings
- 8 Years' NHBC Guarantee Remaining, 995 Year Lease

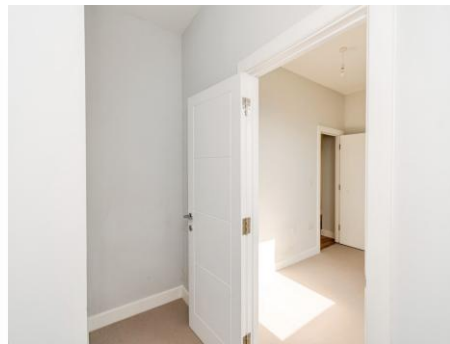
Tenure: Leasehold EPC Rating: C

Council Tax Band: A Service Charge: 1705.78

Ground Rent: Ask Agent

This is a Leasehold property with details as follows; Term of Lease 999 years from 01 Jan 2022. Should you require further information please contact the branch. Please Note additional fees could be incurred for items such as Leasehold packs.

# £190,000



Please note the marker reflects the postcode not the actual property

**view this property online** [fox-and-sons.co.uk/Property/SOU117941](https://fox-and-sons.co.uk/Property/SOU117941)



Property Ref:  
SOU117941 - 0008

1. MONEY LAUNDERING REGULATIONS Intending purchasers will be asked to produce identification documentation at a later stage and we would ask for your co-operation in order that there is no delay in agreeing the sale. 2. These particulars do not constitute part or all of an offer or contract. 3. The measurements indicated are supplied for guidance only and as such must be considered incorrect. Potential buyers are advised to recheck measurements before committing to any expense. 4. We have not tested any apparatus, equipment, fixtures or services and it is in the buyers interest to check the working condition of any appliances. 5. Where an EPC, or a Home Report (Scotland only) is held for this property, it is available for inspection at the branch by appointment. If you require a printed version of a Home Report, you will need to pay a reasonable production charge reflecting printing and other costs. 6. We are not able to offer an opinion either written or verbal on the content of these reports and this must be obtained from your legal representative. 7. Whilst we take care in preparing these reports, a buyer should ensure that his/her legal representative confirms as soon as possible all matters relating to title including the extent and boundaries of the property and other important matters before exchange of contracts.

  
fox & sons



**02380 225155**



[Southampton@fox-and-sons.co.uk](mailto:Southampton@fox-and-sons.co.uk)



32 - 34 London Road, SOUTHAMPTON,  
Hampshire, SO15 2AG



[fox-and-sons.co.uk](https://fox-and-sons.co.uk)