



2 Hockley Crescent
Langthorpe, Boroughbridge. York, YO51 9FN
Guide price £570,000



EXQUISTELY DESIGNED FOUR BEDROOM FAMILY HOME WITH DOUBLE GARAGE AND DRIVE WAY PARKING SITUATED IN THE POPULAR VILLAGE OF LANGTHORPE ONE MILE FROM BOROUGHBIDGE

INVITING RECEPTION HALLWAY, DINING KITCHEN, FAMILY ROOM / OFFICE, STUNNING LOUNGE

FOUR BEDROOMS WITH TWO ENSUITE SHOWER ROOMS, HOUSE BATHROOM AND GROUND FLOOR CLOAK ROOM AND UTILITY ROOM

ENCLOSED REAR GARDEN AND OPEN PLAN FRONT GARDEN

EPC B COUNCIL TAX BAND F



Description

Nestled in the charming area of Hockley Crescent, Langthorpe, this delightful house offers a perfect blend of comfort and style. With its spacious layout, the property boasts two inviting reception rooms, ideal for both relaxation and entertaining guests. The heart of the home is complemented by four well-proportioned bedrooms, providing ample space for family living or accommodating visitors.

The house features three modern bathrooms, ensuring convenience for all residents. Each room is designed to maximise light and space, creating a warm and welcoming atmosphere throughout. The property is situated in a peaceful neighbourhood, making it an excellent choice for families or those seeking a tranquil retreat.

Langthorpe is well-connected to the nearby town of Boroughbridge, offering a range of local amenities, including shops, schools, and recreational facilities. The picturesque surroundings provide opportunities for outdoor activities, making it a wonderful place to call home.

This property is not just a house; it is a place where memories can be made. With its generous living spaces and prime location, it presents an exceptional opportunity for anyone looking to settle in this desirable area. Do not miss the chance to view this splendid home and envision your future in Langthorpe.

Location

The small village of Langthorpe lies 11 miles northeast of the historic spa town of Harrogate, and is surrounded by beautiful North Yorkshire countryside and within easy reach of the North York Moors and Yorkshire Dales National Park. The village is adjacent to the small town of Boroughbridge, where plenty of local amenities and facilities can be found, including a post office, shops, pubs and a large supermarket. The market town of Ripon is within easy reach for a wider variety of shopping and leisure facilities, while the village is well connected for transport, with the A1, less than two miles away, providing great access to the north and south. The nearest mainline stations can be found at Knaresborough or Harrogate.





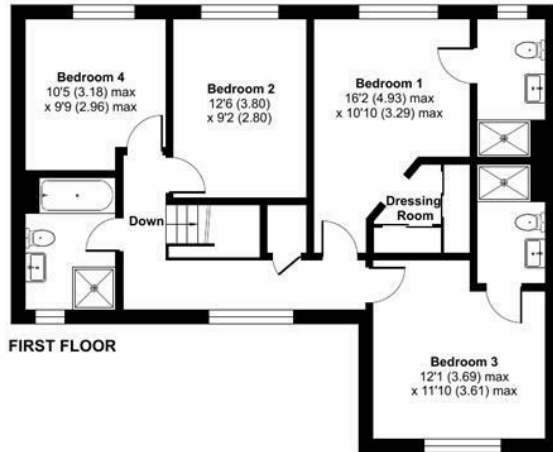
Hockley Crescent, Langthorpe, Boroughbridge, York, YO51

Approximate Area = 1707 sq ft / 158.5 sq m

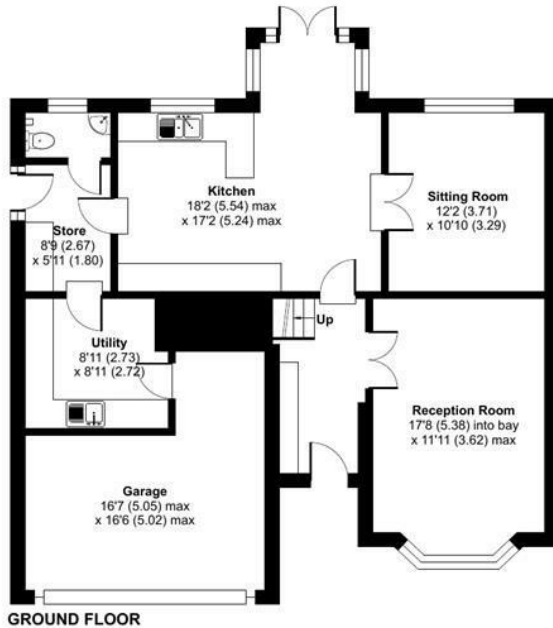
Garage = 212 sq ft / 19.6 sq m

Total = 1919 sq ft / 178.1 sq m

For identification only - Not to scale

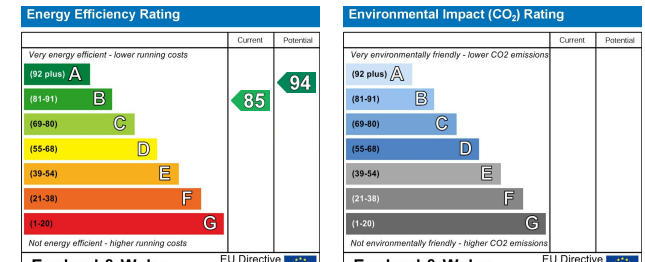


FIRST FLOOR



GROUND FLOOR

Floor plan produced in accordance with RICS Property Measurement 2nd Edition, Incorporating International Property Measurement Standards (IPMS2 Residential). © nrichcom 2026.



Craven-Holmes Estate Agents. 32 High Street, Boroughbridge, York, North Yorkshire, YO51 9AW

t: 01423 329010 e: lettings@craven-holmes.co.uk | sales@craven-holmes.co.uk

www.craven-holmes.co.uk