



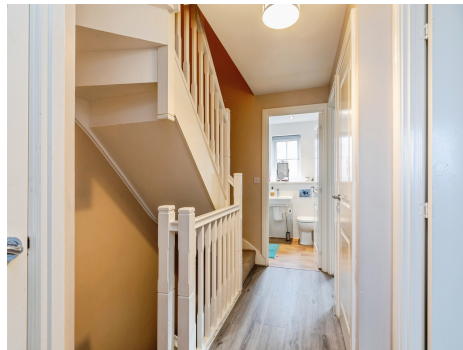
Connells

Thornfield Road  
Bristol



Thornfield Road  
Bristol BS10 6FB

for sale  
**£399,950**



## Property Description

A 4-bed semi-detached corner property, ideally located in the tranquil cul-de-sac estate on Thornfield Road next to Brentry hill. The property is set in a leafy setting adjoining acres of beautiful green fields and protected forest area on the hill with fabulous scenic views.

Inside the property benefits from high-quality luxury hard flooring throughout with carpeted stairs. The property also has double glazing throughout, great insulation and gas central heating.

The ground floor comprises a kitchen/diner with Bosch appliances (5 burner gas hob, double oven/grill, integrated washer/dryer and dishwasher), living room with double doors opening onto the rear garden, understairs storage cupboard and W.C. On the first floor are three bedrooms, two doubles and a single, as well as the family bathroom and two storage cupboards in the hallway. On the second floor is the master bedroom which is an impressive 7.2m in length and has built-in wardrobes with sliding doors, a storage cupboard, loft storage hatch as well as an ensuite shower room.

At the rear of the property is the garden and patio area just outside the double doors from the lounge. Being a corner house on elevated ground gives extra privacy and lots of sunshine throughout the day in the garden.

The side gate from the garden leads to the 12m long versatile carport area with parking

for two cars.

Agents Note:

Please note there is a management charge of £270 per quarter for the property.

## Entrance Hall

## Cloakroom

## Lounge

16' 2" MAX x 11' 7" MAX ( 4.93m MAX x 3.53m MAX )

## Kitchen

16' 6" Into Bay x 9' 1" ( 5.03m Into Bay x 2.77m )

## Landing

## Bedroom 1

23' 8" x 12' 6" ( 7.21m x 3.81m )  
Into Recess

## Ensuite

## Bedroom 2

13' x 8' 5" ( 3.96m x 2.57m )

## Bedroom 3

12' 11" x 9' 3" ( 3.94m x 2.82m )

## Bedroom 4

7' 5" x 6' 7" ( 2.26m x 2.01m )

**Bathroom**

**Front Garden**

**Rear Garden**

**Car Port**

39' x 9' 2" ( 11.89m x 2.79m )













To view this property please contact Connells on

**T 0117 950 1552**  
**E [westburyontrym@connells.co.uk](mailto:westburyontrym@connells.co.uk)**

6 Canford Lane  
BRISTOL BS9 3DH

EPC Rating: B    Council Tax  
Band: D

Tenure: Freehold

**view this property online [connells.co.uk/Property/WOT309307](https://connells.co.uk/Property/WOT309307)**



1. MONEY LAUNDERING REGULATIONS Intending purchasers will be asked to produce identification documentation at a later stage and we would ask for your co-operation in order that there will be no delay in agreeing the sale. 2. These particulars do not constitute part or all of an offer or contract. 3. The measurements indicated are supplied for guidance only and as such must be considered incorrect. Potential buyers are advised to recheck measurements before committing to any expense. 4. We have not tested any apparatus, equipment, fixtures, fittings or services and it is in the buyers interest to check the working condition of any appliances.

Connells Residential is registered in England and Wales under company number 1489613, Registered Office is Cumbria House, 16-20 Hockliffe Street, Leighton Buzzard, Bedfordshire, LU7 1GN. VAT Registration Number is 500 2481 05.

**See all our properties at [www.connells.co.uk](http://www.connells.co.uk) | [www.rightmove.co.uk](http://www.rightmove.co.uk) | [www.zoopla.co.uk](http://www.zoopla.co.uk)**

Property Ref: WOT309307 - 0004