

37 Jackwood Green, £155,000*

(Other charges apply)

RICHMOND
VILLAGES

Part of Bupa

2S

2



1



EPC - D



2 bedroom independent living cottage

This wonderful two-storey independent living cottage is located within Richmond Villages Bede and enjoys a peaceful position at the edge of the village. The home benefits from a south-facing, dual-aspect layout, allowing natural light to flow throughout the property. Beautiful views can be enjoyed from both the front and rear, with outlooks across the bowling green and pond. The setting is private and quiet, offering a sense of seclusion while remaining close to village amenities. A stairlift is available, providing added convenience and future-proofed accessibility.

Specification

- A bright dual-aspect living room including a feature fireplace and stair-lift for easy access to upstairs.
- Modern fitted kitchen with range of wall and base units and integrated appliances including fridge/freezer, washer/dryer, dishwasher and oven and hob with doors leading to a private patio and communal garden area.
- Master bedroom with plenty of storage and fitted wardrobes..
- Second bedroom with bowling green views.
- Shower room with walk-in shower and fully fitted suite.
- Entrance hall with practical space for belongings.
- TV and satellite points*.
- Well stocked flower borders and lawns maintained by the Village Gardeners.
- Allocated parking space for one car.

*Satellite subscription not included.

Important Notice: These particulars are intended to give a fair and substantially correct overall description. **Other fees and charges apply**, please contact the Village Advisers for further details. Properties are sold on a 125 year lease and this property has 118 years remaining.

02476 645 544

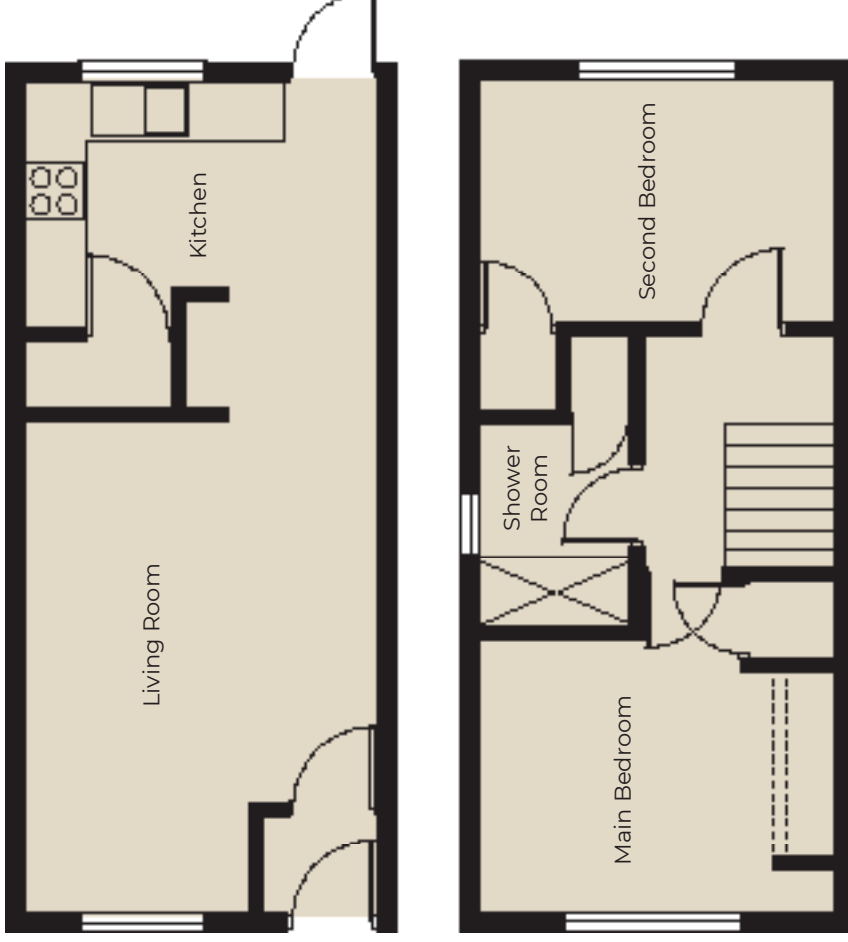
bedevillage@richmond-villages.com

Richmond Villages Bede,
Hospital Lane, Bedworth, Warwickshire CV12 0PB

37 Jackwood Green

Cottage | 57.9m² (623ft²)

- Kitchen**
2529mm x 1615mm
8'3" x 5'3"
- Living Room**
4605mm x 3627mm
15'11" x 11'9"
- Main Bedroom**
3566mm x 2733mm
11'7" x 9'10"
- Second Bedroom**
3577mm x 2164mm
11'7" x 7'10"
- Shower Room**
2042mm x 1706mm
6'7" x 5'6"



These particulars are intended to give a fair and substantially correct overall description. Measurements have been taken at 1500mm skirting height. All dimensions are approximate. Bedroom measurements include the wardrobe if applicable. Room measurements include bay windows if applicable. Furniture layout is to give an indicative impression. Although all efforts have been made to ensure its accuracy at time of print dimensions, fixtures, fittings, finishes and specifications are subject to change without notice. The properties are sold unfurnished.

