



Anthony Webb

97 Barrowell Green, Winchmore Hill, London, N21  
£315,000 Leasehold

**Anthony Webb**  
ESTATE AGENTS

# 97 Barrowell Green, Winchmore Hill, London, N21

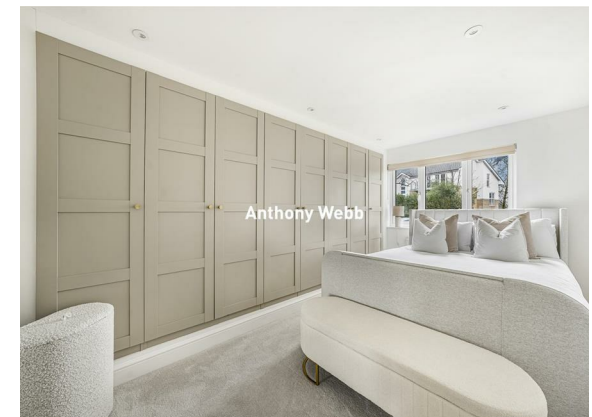
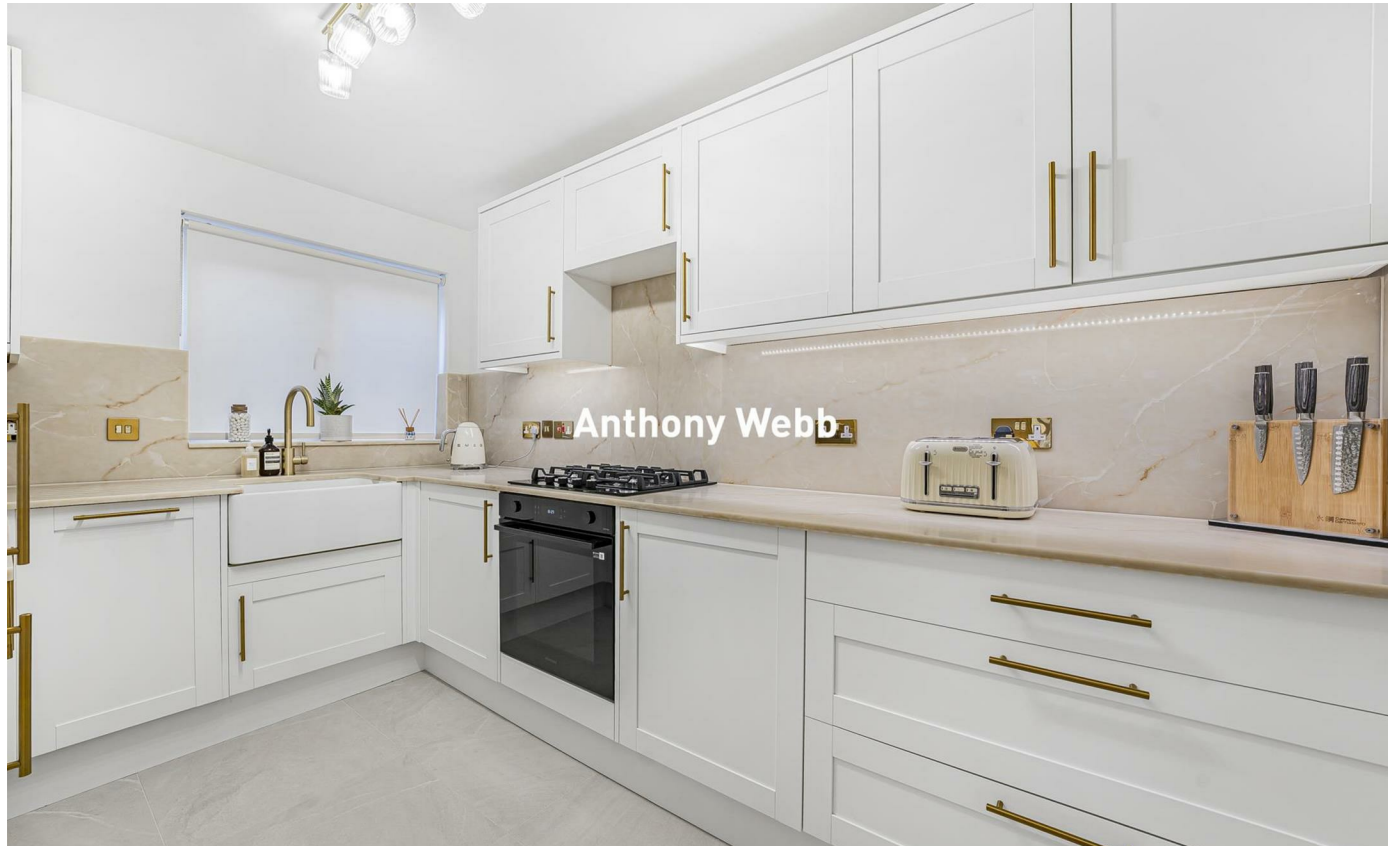
Stunning newly renovated one double bedroom apartment situated on the ground floor of this small 1990s purpose built block/development close to Winchmore Hills shops, restaurants, bus routes and mainline station into Moorgate.

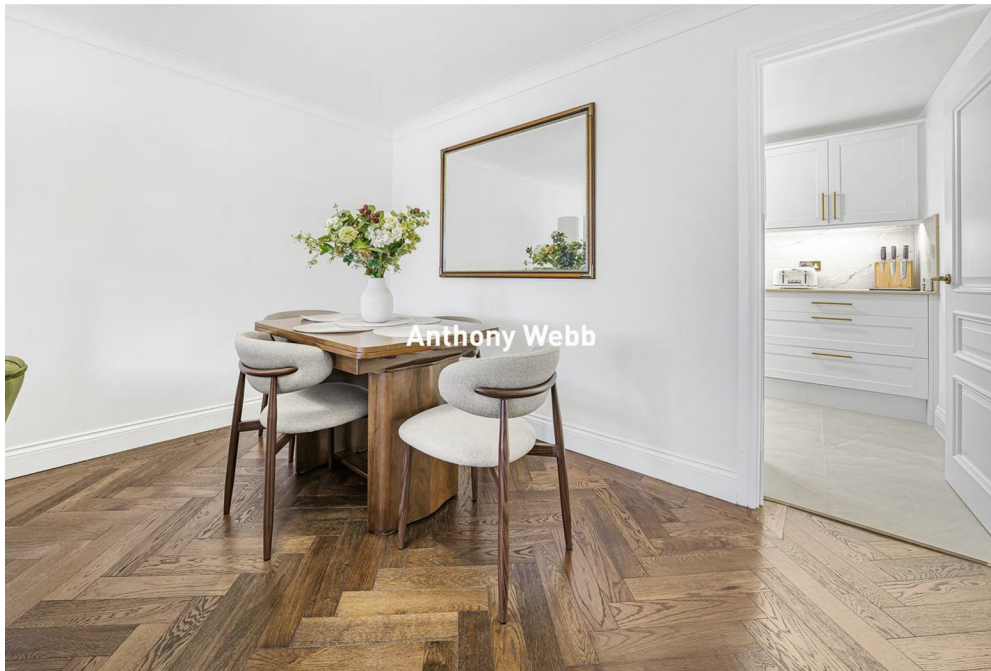
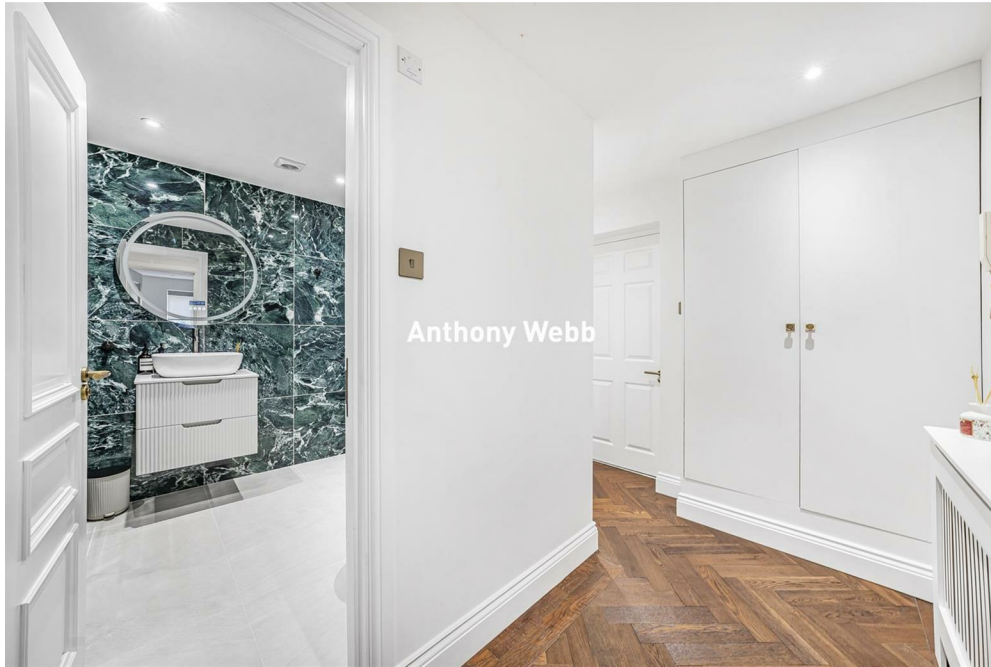
Fir Tree Lodge is located on Barrowell Green and is well positioned for Green Lane's wealth of amenities including the Sainsburys supermarket, Firs Farm wetlands and various green spaces.

Secure communal entrance with entry phone system • Hallway with built in storage and new wood herringbone parquet floor • Spacious Living/dining space with new wood herringbone parquet floor • Modern fitted kitchen with solid work surfaces and ceramic sink • Large double bedroom with floor to ceiling fitted wardrobes with LED lighting • Good size modern shower room • Double glazing installed 2023 • Gas central heating • Communal gardens • Ample communal parking facilities.

Enfield Council Tax Band C  
Remaining lease - 90 Years  
Service charge - £1870 per annum  
Ground rent - £150 per annum

- Ground floor apartment
- One double bedroom
- Spacious living room
- Modern fitted kitchen
- Modern shower room
- Double glazed/gas central heating
- Allocated parking space
- Communal gardens





# 97 Barrowell Green Winchmore Hill London N21 3AU

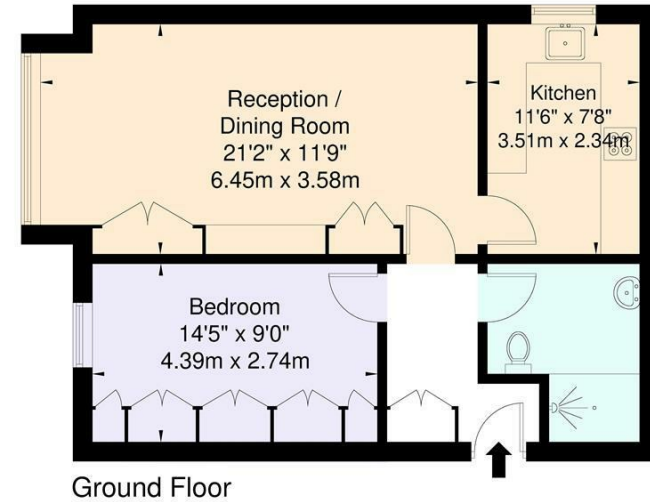
Fir Tree Lodge, Barrowell Green, N21 3AU  
Approximate Gross Internal Area = 56.6 sq m / 609 sq ft



Tenure: Leasehold  
Gross Internal Area: 609.00 sq ft



Energy Efficiency Rating		Current	Potential
Very energy efficient - lower running costs			
(92 plus) A			
(81-91) B			
(69-80) C			
(55-68) D			
(39-54) E			
(21-38) F			
(1-20) G			
Not energy efficient - higher running costs			
England & Wales		EU Directive 2002/91/EC	
Environmental Impact (CO <sub>2</sub> ) Rating		Current	Potential
Very environmentally friendly - lower CO <sub>2</sub> emissions			
(92 plus) A			
(81-91) B			
(69-80) C			
(55-68) D			
(39-54) E			
(21-38) F			
(1-20) G			
Not environmentally friendly - higher CO <sub>2</sub> emissions			
England & Wales		EU Directive 2002/91/EC	



For Illustration Purposes Only - Not To Scale

This floor plan should be used as a general outline for guidance only and does not constitute in whole or in part an offer or contract. Any intending purchaser or lessee should satisfy themselves by inspection, enquiries and full survey as to the correctness of each statement. Any areas, measurements or distances quoted are approximate and should not be used to value a property or be the basis of any sale or let.

Property particulars as supplied by Anthony Webb Estate Agents are set out as a general outline in accordance with the Property Misdescriptions Act (1991) only for the guidance of intending purchasers of lessees, and do not constitute any part of an offer or contract. Details are given without any responsibility, and any intending purchasers, lessees or third parties should not rely on them as inspection or otherwise as to the correctness of each of them. We have not carried out a structural survey and the services, appliances and specific fittings have not been tested. All photographs, measurements, floor plans and distances referred to are given as a guide only and should not be relied upon for the purchase of carpets or any other fixtures statements or representations of fact, but must satisfy themselves by or of fittings, gardens, roof terraces, balconies and communal gardens as well as tenure and lease details cannot have their accuracy guaranteed for intending purchasers. Lease details, service ground rent (where applicable) are given as a guide only and should be checked and confirmed by your solicitor prior to exchange of contracts. no person in the employment of Anthony Webb has any authority to make any representation or warranty whatever in relation to this property.

348 Green Lanes, Palmers Green, London N13 5TJ  
020 8882 7888  
palmersgreen@anthonywebb.co.uk  
anthonywebb.co.uk

**Anthony Webb**  
ESTATE AGENTS