



Nunhead Green, SE15 | £315,000

02087029666

[peckham@pedderproperty.com](mailto:peckham@pedderproperty.com)

**pedder**  
We live local





# In General

- Chain free
- Two bedrooms
- Fantastic location
- Close to Nunhead Rail and Peckham Rye Overground
- Excellent bus links
- Fantastic central location
- Close to Peckham Rye Park
- Private outdoor space
- Newly decorated

# In Detail

A fantastically located, newly refurbished two-bedroom flat within easy walk to Nunhead and Peckham Rye with private outdoor roof terrace.

This property spread over 448 square feet and offers two bedrooms, well-presented kitchen, modern shower room, living space leading onto a private terrace which overlooks Nunhead Green.

Excellently located, the property is just 0.4 miles to Nunhead Train Station and only 0.9 miles to Peckham Rye station. Both offering easy connections to London Terminals and across the City. Bus Routes to Tower Bridge and Shoreditch are found just outside your doorstep making for easy access to Central London.

Within Nunhead Village, there is a large variety of cafes, coffee shops, pubs and eateries making a vibrant local village area but still within minutes of Central London.

The property is offered to the market without onward chain.

Early Viewings are highly recommended for this property, Call the Pedder Peckham to arrange a viewing today!

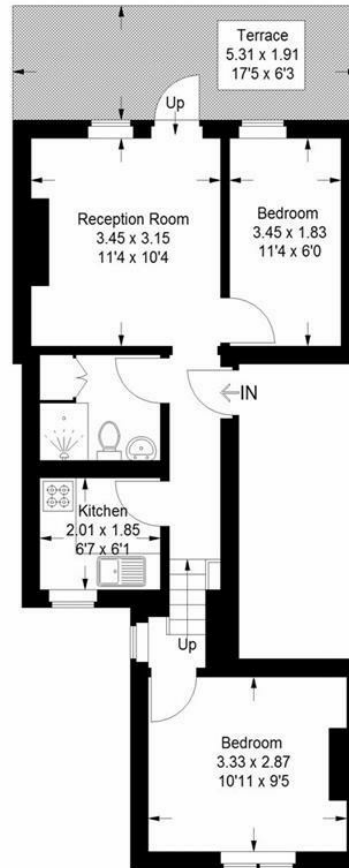
EPC: C | Council Tax Band: B | Lease: 90 years remaining | SC: 30% on an ad hoc basis | GR: £250 pa | BI: TBC



# Floorplan

Nunhead Green, SE15

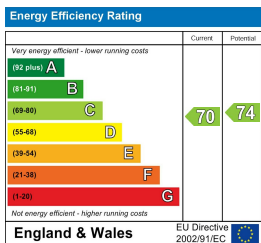
Approximate Gross Internal Area  
41.6 sq m / 448 sq ft



First Floor

Copyright www.pedderproperty.com © 2022

These plans are for representation purposes only  
as defined by RICS - Code of Measuring Practice.  
Not drawn to Scale. Windows and door openings  
are approximate. Please check all dimensions,  
shapes and compass bearings before making  
any decisions reliant upon them.



Pedder Property Ltd trading as Pedder for themselves and for the vendor/landlord of this property whose agents they are, give notice that (1) these particulars do not constitute any part of an offer or contract, (2) all statements contained within these particulars are made without responsibility on the part of Pedder or the vendor/landlord, (3) whilst made in good faith, none of the statements contained within these particulars are to be relied upon as a statement of representation or fact, (4) any intending purchaser/tenant must satisfy him/herself by inspection or otherwise as to the correctness of each of the statements contained within these particulars, (5) the vendor/landlord does not make or give either Pedder or any person in their employment any authority to make or give representation or warranty whatsoever in relation to this property.