





Property Description

This three-bedroom semi-detached home offers spacious and versatile living in a sought-after location. The ground floor boasts a generous open-plan living and dining area, along with a kitchen that provides excellent potential for those ready to add their own style and updates.

Upstairs, you'll find three generously sized bedrooms, a family bathroom, and a separate WC, providing comfort and convenience.

Outside, the property boasts an extensive rear garden, ideal for outdoor activities and relaxation, along with a neat and tidy front garden. A driveway with gated access leads to a detached garage, offering secure parking and additional storage.

This home combines practicality with charm and is ready for you to make it your own.

Porch & Entrance Hall

Welcoming entrance via a porch, leading into a bright hallway with a carpeted staircase to the first floor. There is a useful understairs storage cupboard, perfect for coats and shoes, and doors providing access to the living room, dining room, and kitchen, creating a practical flow throughout the ground floor.

Open-Plan Living & Dining Room

A charming bay-fronted living room featuring a stylish fireplace, creating a warm and inviting focal point. An archway leads seamlessly into the dining room, offering an open and airy feel.

Positioned to the rear aspect, this bright and spacious dining area is flooded with natural light thanks to patio doors opening onto the rear garden, perfect for entertaining or enjoying views of the outdoors.

Kitchen

Located to the rear aspect of the home, the kitchen enjoys a pleasant outlook with a window overlooking the garden and direct access to the rear outdoor space. It is fitted with a range of base units, a sink, and offers space for a cooker, providing a practical layout that's ready for your personal touches and updates.

First Floor Landing:

The first-floor landing features carpeted flooring, a window to the side elevation allowing natural light, and loft access via a fitted ladder to a boarded and insulated loft, providing excellent additional storage space.

Bedroom One

A spacious bay-fronted master bedroom featuring fitted wardrobes for ample storage, a radiator, and carpeted flooring for comfort.

The bay window adds character and floods the room with natural light, creating a bright and inviting space.

Bedroom Two

A generous double bedroom situated to the rear aspect, benefiting from fitted storage, a radiator, and carpeted flooring. The rear position offers a peaceful outlook, making it an ideal retreat.

Bedroom Three

A versatile single bedroom located to the front aspect of the home, complete with radiator and carpeted flooring. Ideal as a nursery, home office, or study, offering flexibility to suit your lifestyle needs.

Family Bathroom

A minimalist family bathroom fitted with a bath and wash hand basin, complemented by a window to the rear aspect that brings in natural light, creating a bright and functional space.

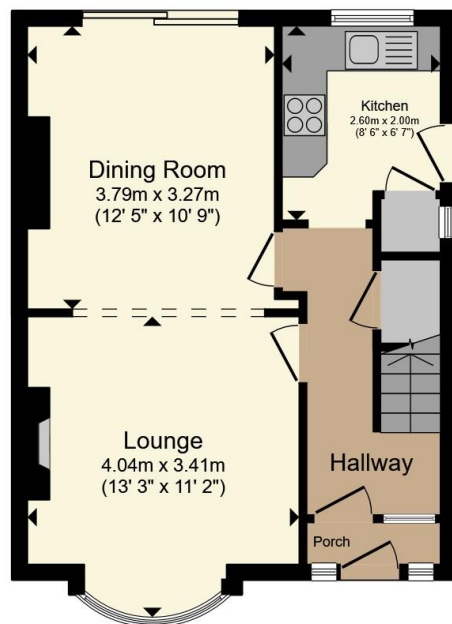
WC

A practical WC featuring tiled splashbacks and a window to the side elevation, providing ventilation and natural light.

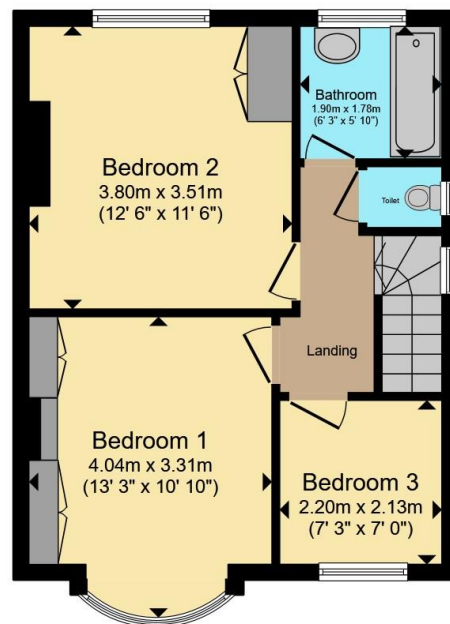




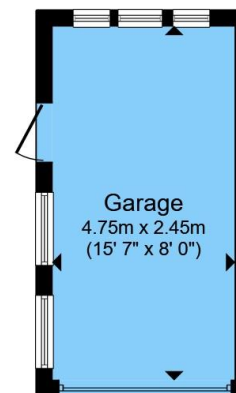




Ground Floor



First Floor



Garage

Total floor area 93.5 m² (1,006 sq.ft.) approx

This floor plan is for illustrative purposes only. It is not drawn to scale. Any measurements, floor areas (including any total floor area), openings and orientation are approximate. No details are guaranteed, they cannot be relied upon for any purpose and they do not form part of any agreement. No liability is taken for any error, omission or misstatement. A party must rely upon its own inspection(s). Powered by www.propertybox.io

Connells

To view this property please contact Connells on

T 0116 262 0022
E leicester@connells.co.uk

22-24 Halford Street
LEICESTER LE1 1JB

EPC Rating: D Council Tax
Band: B

Tenure: Freehold

view this property online connells.co.uk/Property/LTR325506



1. MONEY LAUNDERING REGULATIONS Intending purchasers will be asked to produce identification documentation at a later stage and we would ask for your co-operation in order that there will be no delay in agreeing the sale. 2. These particulars do not constitute part or all of an offer or contract. 3. The measurements indicated are supplied for guidance only and as such must be considered incorrect. Potential buyers are advised to recheck measurements before committing to any expense. 4. We have not tested any apparatus, equipment, fixtures, fittings or services and it is in the buyers interest to check the working condition of any appliances.

Connells Residential is registered in England and Wales under company number 1489613, Registered Office is Cumbria House, 16-20 Hockliffe Street, Leighton Buzzard, Bedfordshire, LU7 1GN. VAT Registration Number is 500 2481 05.

See all our properties at www.connells.co.uk | www.rightmove.co.uk | www.zoopla.co.uk

Property Ref: LTR325506 - 0003