



St. Benedicts Road, BIRMINGHAM

burchell
edwards



Property Description

Introducing our new beautiful three bedroom terraced home, perfect for those looking for a move-in ready property with no work to be done. This charming home has been meticulously updated with modern finishes and thoughtful design touches throughout. From the two reception rooms to the spacious bedrooms, every inch of this home has been carefully crafted to create a comfortable and inviting space for you to call your own. With a convenient location and plenty of natural light, this home is sure to impress even the most discerning buyer. Don't miss out on the opportunity to make this beautifully renovated home yours today!

Lounge

Double glazed bay window to front elevation, central heating radiator, laminate flooring and gas fire.

Dining Room

Double glazed window to rear elevation, central heating radiator, laminate flooring and gas fire.

Kitchen

Double glazed window to side elevation, a range of wall and base units with work surface over incorporating a sink with drainer unit, space and connections for gas cooker, space and plumbing for washing machine, extractor, central heating radiator, tiling to splash prone areas and laminate flooring.

Utility Room

Double glazed door to side elevation, access to bathroom, central heating radiator, wall and base storage units.

Bathroom

Double glazed window to side elevation, bath, W.C, wash hand basin, central heating radiator and tiling to walls.

Landing

Loft access via hatch and all doors off.

Bedroom One

Two double glazed windows to front elevation and central heating radiator.

Bedroom Two

Double glazed window to rear elevation and central heating radiator.

Bedroom Three

Double glazed window to rear elevation and central heating radiator.

W.C

Double glazed window to side elevation, W.C and wash hand basin.

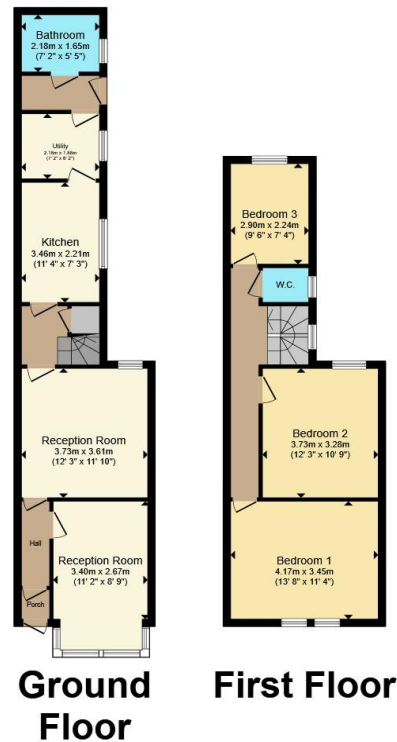
Rear Garden

Slabbed garden with storage shed at rear, outside tap, side access to frontage and fencing to the boundaries.









Total floor area 93.6 m² (1,007 sq.ft.) approx

This floor plan is for illustrative purposes only. It is not drawn to scale. Any measurements, floor areas (including any total floor area), openings and orientation are approximate. No details are guaranteed, they cannot be relied upon for any purpose and they do not form part of any agreement. No liability is taken for any error, omission or misstatement. A party must rely upon its own inspection(s). Powered by www.propertybox.io



To view this property please contact Burchell Edwards on

T 0121 742 1725
E sheldon@burchelledwards.co.uk

2208 Coventry Road Sheldon
 BIRMINGHAM B26 3JH

EPC Rating: C Council Tax
 Band: A

Tenure: Freehold

view this property online burchelledwards.co.uk/Property/SHL211373



1. MONEY LAUNDERING REGULATIONS Intending purchasers will be asked to produce identification documentation at a later stage and we would ask for your co-operation in order that there will be no delay in agreeing the sale. 2. These particulars do not constitute part or all of an offer or contract. 3. The measurements indicated are supplied for guidance only and as such must be considered incorrect. Potential buyers are advised to recheck measurements before committing to any expense. 4. We have not tested any apparatus, equipment, fixtures, fittings or services and it is in the buyers interest to check the working condition of any appliances.

Burchell Edwards is a trading name of Connells Residential which is registered in England and Wales under company number 1489613, Registered Office is Cumbria House, 16-20 Hockliffe Street, Leighton Buzzard, Bedfordshire, LU7 1GN. VAT Registration Number is 500 2481 05.

See all our properties at www.burchelledwards.co.uk | www.rightmove.co.uk | www.zoopla.co.uk

Property Ref: SHL211373 - 0002