



## Oakhurst Close, KT2

£5,100 Per calendar month

A four double bedroom, detached house in a gated development with views over Richmond Park. The property has been designed with stylish and luxury living in mind and is the perfect option for a family looking for outstanding school catchment. The property also benefits from a heat source pump and woodburner.

Tucked away in a quiet cul de sac in North Kingston, which is well known for its Ofsted outstanding rated schools. The house is perfectly placed just around the corner from Richmond Park.

### Features

- Four Double Bedrooms
- Large Attic Space
- Off-Street Parking
- Gated Development
- Views Of Richmond Park
- North Kingston





## Oakhurst Close, KT2

From the moment you walk in to the house you'll feel a sense of tranquility and space. There is a separate reception room/ study to the front of the house, perfect if you work from home or if you need a playroom for the kids. The main open plan living area at the back of the house is ideal for bringing the family together or for those parties you're already so famous for.

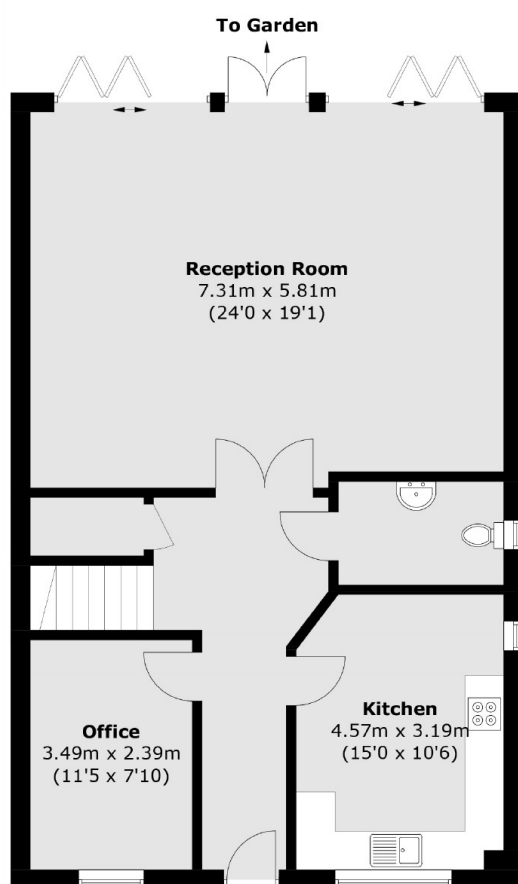
The house is laid out over three floors and measures almost 1700 square feet, giving fantastic lateral space throughout. Each bedroom incorporates fitted wardrobes and is of a similar size, great for avoiding squabbles between the kids for the largest bedroom and with the views over Richmond Park you'll be busy pointing out the deer instead.

The house is packed full of eco friendly elements and luxury touches that will continue to impress throughout the house. Not only is the house incredibly energy efficient with an EPC rating of B, but you'll love the underfloor heating spread across the entire ground floor, Cat 6 and HD wiring, an AV wired speaker system, video intercom and the remainder of an NHBC guarantee.

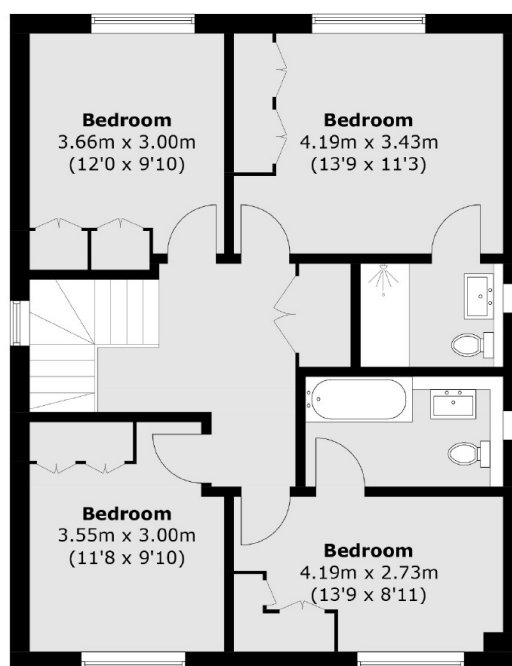




# Oakhurst Close, Kingston Upon Thames, KT2



**Ground Floor**



**First Floor**

Total area (approx.): 156.2 sq. m (1,681.3 sq. ft)