



LINDEN GARDENS, W2

£1,325,000

Prestigious Hyde Park Location
Prime Notting Hill Address
Grand Reception Room
Exceptionally Quiet Position
Impressive Ceiling Height
No Onward Chain

@marshandparsons
marshandparsons.co.uk

MARSH &
PARSONS



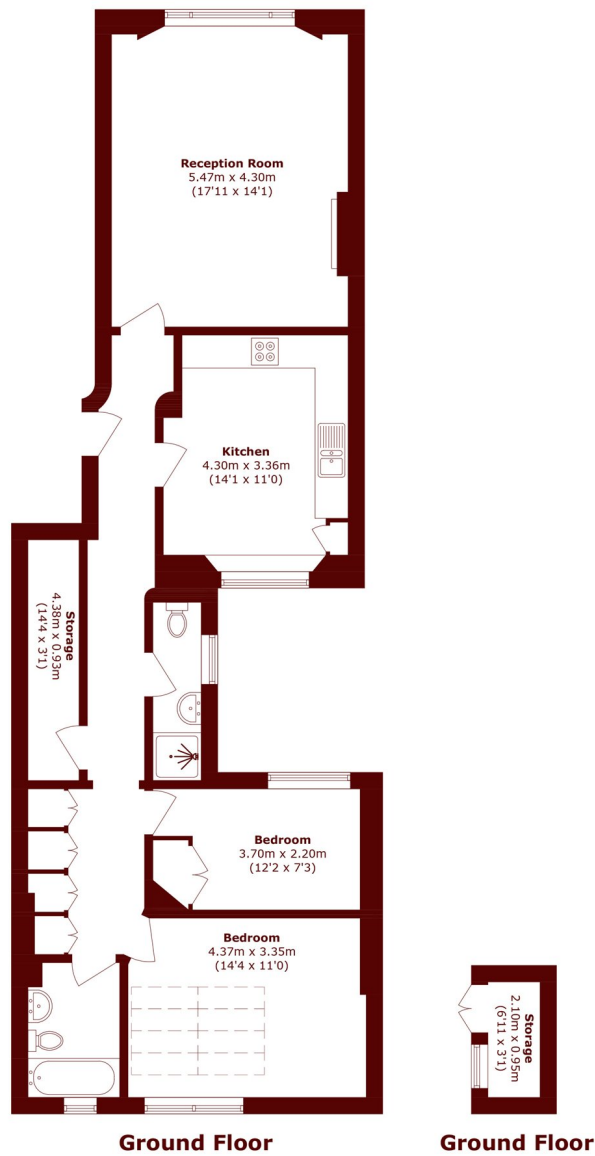
ABOUT THE PROPERTY

Positioned within an elegant stucco-fronted period building in a sought-after cul-de-sac in the heart of Notting Hill, this beautifully presented raised ground floor apartment effortlessly blends classic character with modern comfort.

The property is bright and airy throughout, boasting impressive ceiling heights and well-balanced accommodation. Comprising two generously proportioned bedrooms, a separate kitchen, a spacious reception room, and a well-appointed bathroom and shower room, this home offers both practicality and charm in equal measure.



STEP INSIDE LINDEN GARDENS



Total area (approx.): 90.9 sq. m (978.4 sq. ft)

Storage area (approx.): 3.2 sq. m (34.4 sq. ft)

Notting Hill
020 7313 2890

Energy Rating: D We aim to make our particulars both accurate and reliable. However, they are not guaranteed; nor do they form part of an offer or contract. If you require clarification on any points then please contact us, especially if you're traveling some distance to view. Please note that appliances and heating systems have not been tested and therefore no warranties can be given as to their good working order

**MARSH &
PARSONS**