



WYNDHAM PLACE

W1H

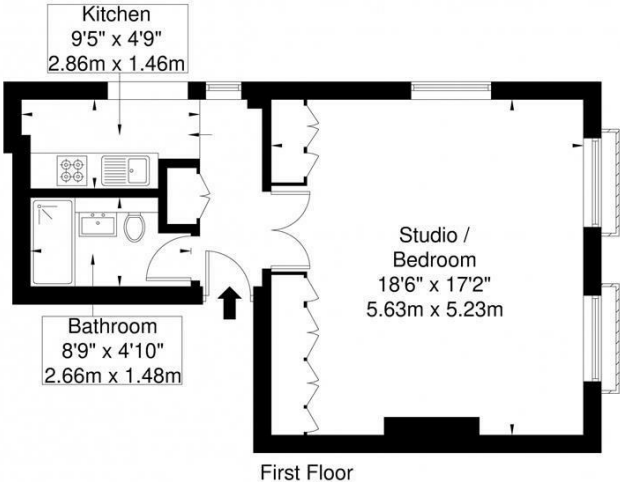
£2,500 PER MONTH

Exceptionally bright and spacious newly carpeted first floor studio flat with high ceilings in a converted period style property. Located within close proximity to Baker Street tube and within easy walking distance to Marylebone High Street, this flat would make an ideal pied-à-terre and is available either furnished or unfurnished.

PMP | INTERNATIONAL

Wyndem Place, London W1H

Approx. Gross Internal Area = 42.5 sq m / 457 sq ft



Ref

Copyright THEBLÉUPLAN

Disclaimer : Floor plan measurements are approximate and are for illustrative purposes only. While we do not doubt the floor plan accuracy and completeness, you or your advisors should conduct a careful, independent investigation of the property in respect of monetary valuation.



Energy Efficiency Rating		
	Current	Potential
Very energy efficient - lower running costs		
(92 plus) A		
(81-91) B		
(69-80) C		
(55-68) D		
(39-54) E		
(21-38) F		
(1-20) G		
Not energy efficient - higher running costs		
England & Wales	EU Directive 2002/91/EC	

Agents Note: Whilst every care has been taken to prepare these particulars, they are for guidance purposes only. All measurements are approximate and are for general guidance purposes only and whilst every care has been taken to ensure their accuracy, they should not be relied upon and potential buyers/tenants are advised to recheck the measurements

London
PMP International
94 Belsize Lane
Belsize Park
London
NW3 5BE

020 7701 2878
info@pmpi.co.uk
www.pmpi.co.uk

PMP | INTERNATIONAL