



Rectory Road | Dickleburgh | Diss | IP21 4NY

£275,000

DURRANTS
SINCE 1853

Key features

- Semi-detached house
- 3 double bedrooms
- Ground floor bathroom and first floor shower room
- Conservatory
- Upgraded by vendors
- Well-presented
- Woodburning stove
- Off-road parking
- Popular village
- Open plan kitchen/dining room

Description

£275,000 - £300,000. A well-presented and upgraded semi-detached 3 bedroom house with off-road parking and a conservatory in a popular village.

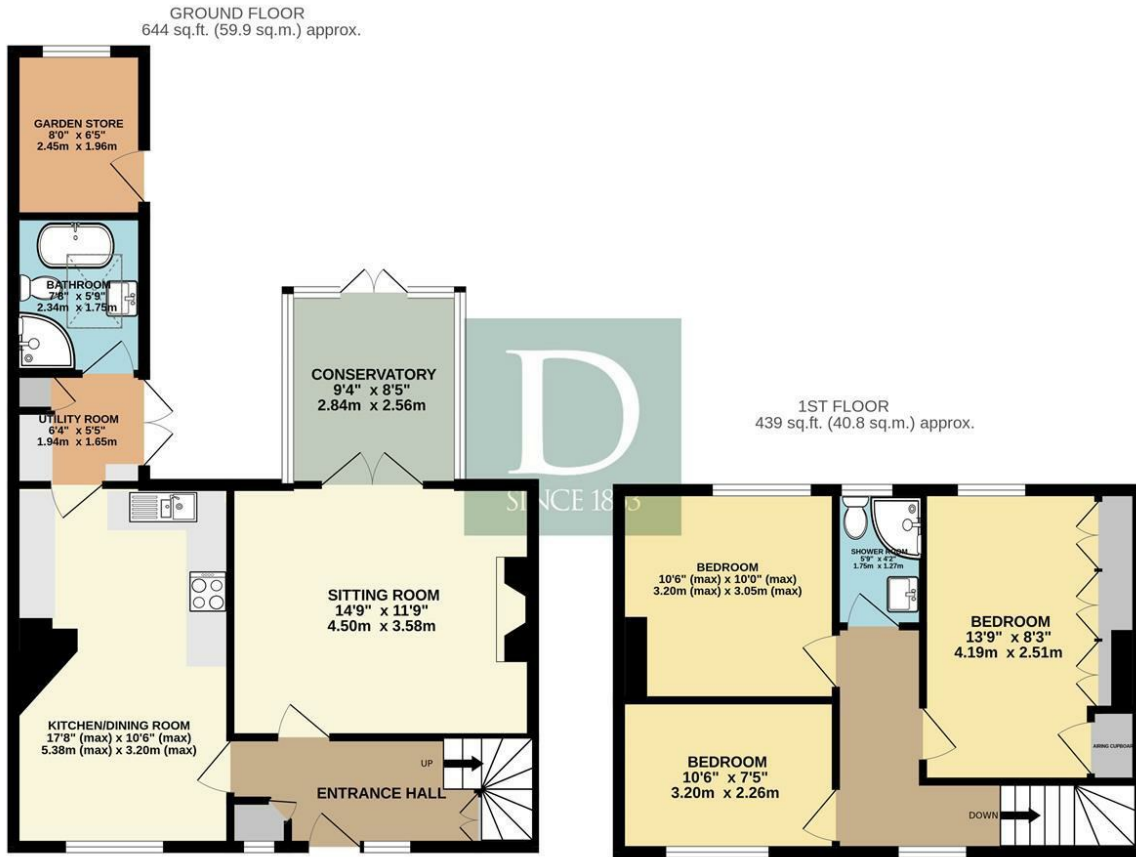


Directions





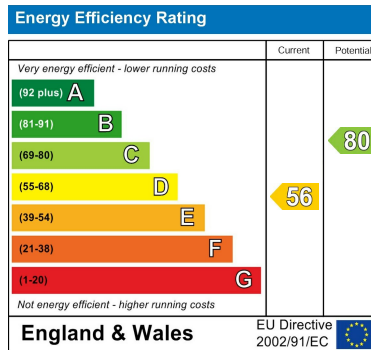
Floor plans



TOTAL FLOOR AREA: 1083 sq.ft. (100.6 sq.m.) approx.

Whilst every attempt has been made to ensure the accuracy of the floorplan contained here, measurements of doors, windows, rooms and any other items are approximate and no responsibility is taken for any error, omission or mis-statement. This plan is for illustrative purposes only and should be used as such by any prospective purchaser. The services, systems and appliances shown have not been tested and no guarantee as to their operability or efficiency can be given.

Made with Metropix ©2026



2b Market Hill
Diss
Norfolk
IP22 4WH
01379 642233

diss@durrants.com
<https://durrants.com/>