



## Walpole Road, TW11

### £199,950

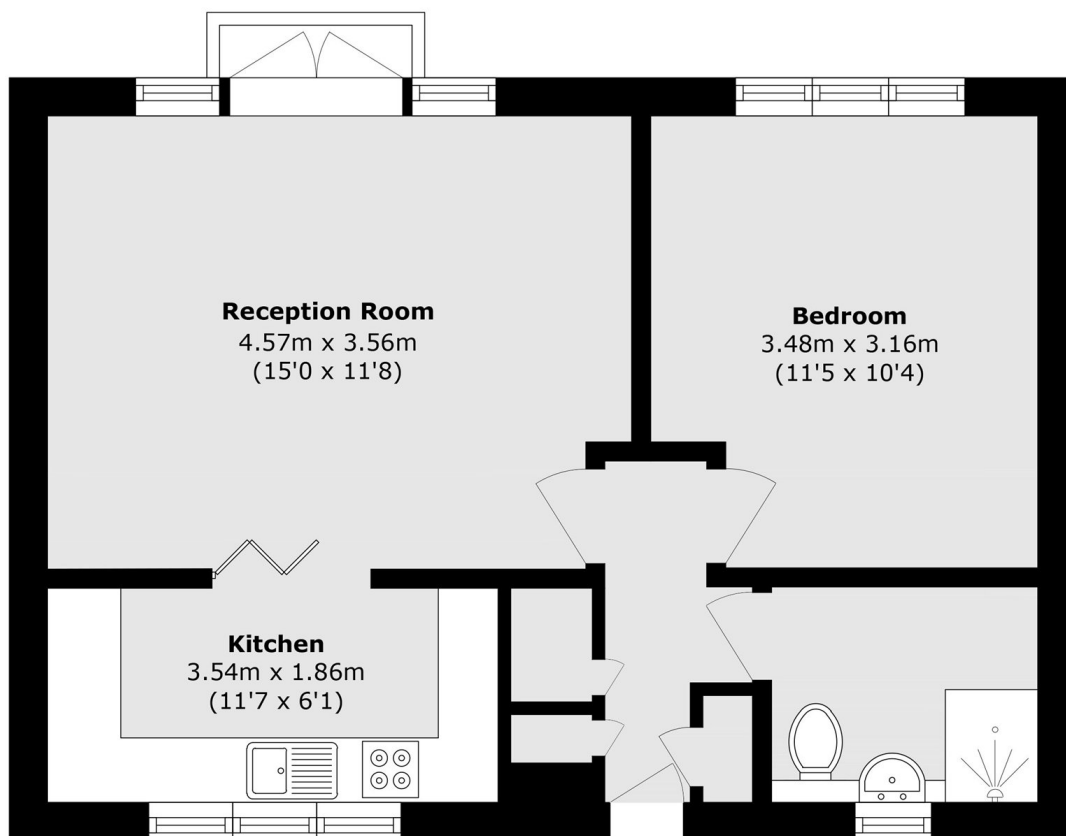
This well presented one bedroom retirement apartment is perfectly positioned in the centre of Teddington. Designed to help residents feel relaxed, independent and secure, this well kept development provides quality living paired with on-site facilities and a lovely communal garden.

Waterhouse Court is located at the end of Walpole Road which is situated in the centre of Teddington, close to Teddington station and Teddington's Broad Street with its array of shops and restaurants.

### Features

- Central Location
- One Bedroom
- Communal Gardens
- Retirement Development
- Secure Entry System
- On-site Residents Lounge

# Walpole Road, Teddington, TW11



Total area (approx.): 41.9 sq. m (451.0 sq. ft)