

Wheatsheaf Court, Knighton Fields

£280,000 Leasehold

Spacious four-bedroom townhouse offering flexible accommodation across three floors, stylish open-plan living, allocated parking and a low-maintenance garden, ideally placed for Leicester city.

Council Tax band: B

Tenure: Leasehold

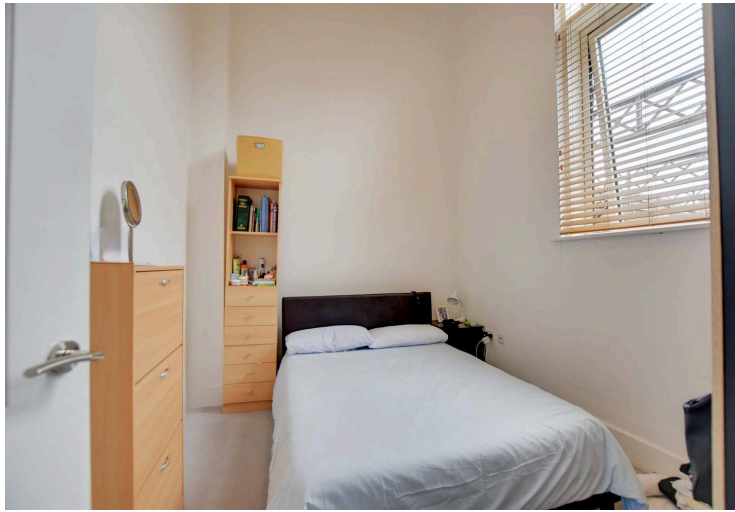
EPC Energy Efficiency Rating: D



Knightsbridge
Estate Agents

0116 274 5544





Entrance Lobby

Features an internal door leading to the entrance hall, stairs to the first floor, and a radiator.

Bedroom Two

11' 2" x 10' 6" (3.40m x 3.20m)

(plus built-in mirrored wardrobe space) Includes built-in mirrored sliding wardrobes and a radiator.

Sitting Room/Bedroom

12' 6" x 12' 1" (3.80m x 3.69m)

(currently being used as a bedroom). Includes a double-glazed window to the front elevation and a radiator.

Shower Room

7' 10" x 5' 11" (2.40m x 1.80m)

Includes a tiled shower cubicle, wash hand basin, low-level WC, shaver point, extractor fan, airing cupboard, tiled flooring, and a heated chrome towel rail.



First Floor Landing

Features an external door to the rear garden, stairs to the second floor, and a radiator.

Living Kitchen Dining Room

16' 1" x 13' 5" (4.90m x 4.10m)

Features a tall double-glazed window to the front elevation, an exposed brick wall, and a tall window. Equipped with a 1.5 bowl stainless steel sink and drainer unit, and a range of wall and base units with work surfaces over. Includes a built-in oven and electric hob with a stainless steel chimney hood over, alongside space for a fridge-freezer. Finished with a partly beamed ceiling, inset ceiling spotlights, and partly tiled, partly carpeted flooring.

Bedroom One

10' 10" x 8' 6" (3.30m x 2.60m)

Features a double-glazed window to the rear elevation, a partly beamed ceiling, and a radiator.

Second Floor Landing

Includes a radiator.

Bedroom Three

16' 0" x 8' 2" (4.88m x 2.50m)

Includes two double-glazed windows to the rear elevation and a radiator.

Bedroom Four

15' 1" x 10' 10" (4.60m x 3.30m)

Includes a double-glazed window to the front elevation and a radiator.

Bathroom

7' 2" x 6' 7" (2.19m x 2.00m)

Features a bath with a mixer tap and shower attachment, wash hand basin, low-level WC, extractor fan, inset ceiling spotlights, tiled flooring, and a heated chrome towel rail.

Rear Garden

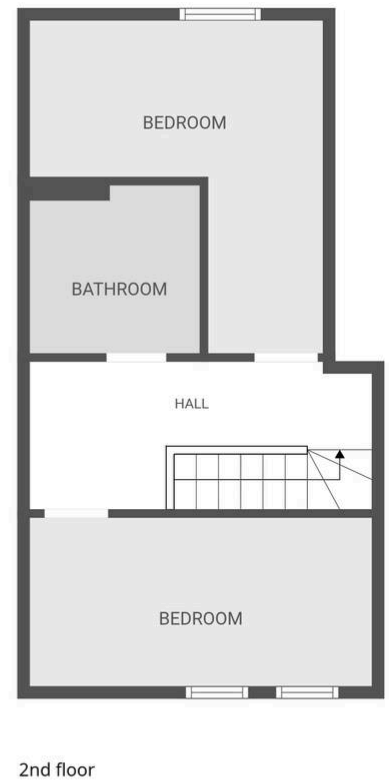
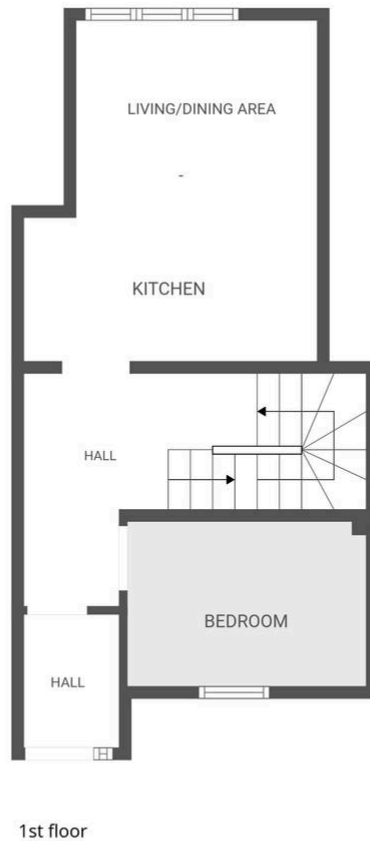
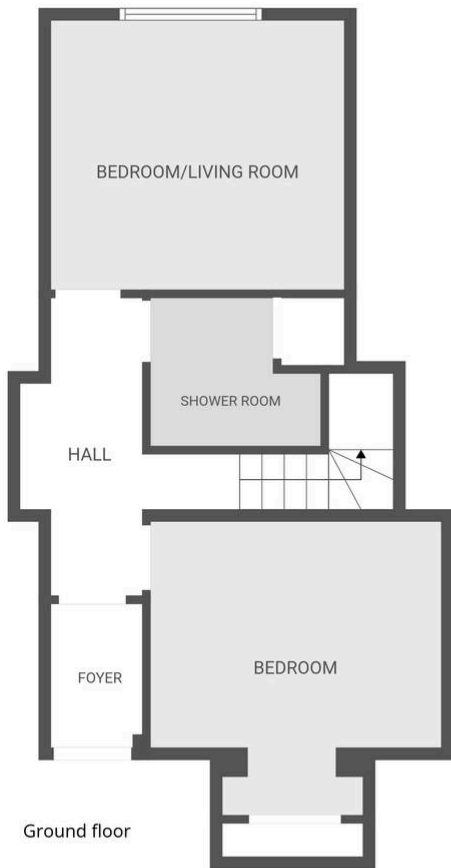
Astro-turfed with a fenced perimeter and a gate providing access to a communal decked area.

Allocated Parking

2 Spaces

Lease Information:

Service Charge: £223.02 Per Month, Ground Rent: £537.20 Per Year, Lease Length: 125 years from 2015



FLOOR PLAN CREATED BY CUBICASA APP. MEASUREMENTS DEEMED HIGHLY RELIABLE BUT NOT GUARANTEED.

We'll keep you moving...



We must inform all prospective purchasers that the measurements are taken by an electronic tape and are provided as a guide only and they should not be used as accurate measurements. We have not tested any mains services, gas or electric appliances, or fixtures and fittings mentioned in these details, therefore, prospective purchasers should satisfy themselves before committing to purchase. Intending purchasers must satisfy themselves by inspection or otherwise to the correctness of the statements contained in these particulars. Knightsbridge Estate Agents & valuers (nor any person in their employment) has any authority to make any representation or warranty in relation to the property. The floor plans are not to scale, and are intended for use as a guide to the layout of the property only. They should not be used for any other purpose. Similarly, the plans are not designed to represent the actual décor found at the property in respect of flooring, wall coverings or fixtures and fittings.