




Monarch Close, Wymondham, NR18

Offers In Region Of £400,000

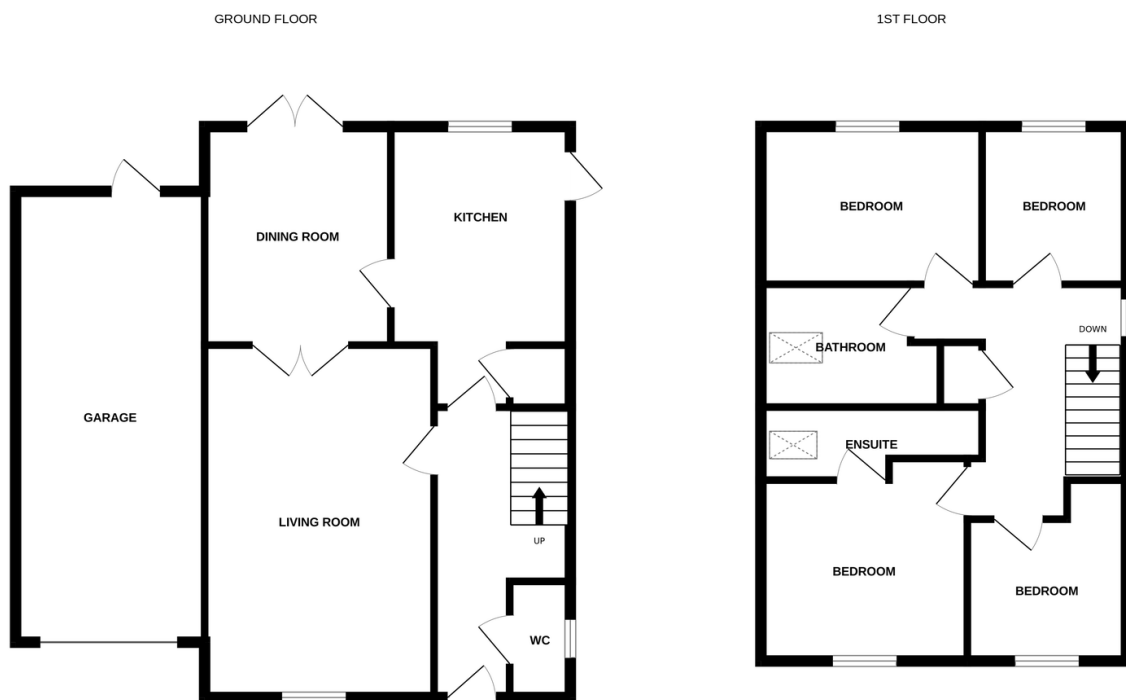
 4  2  2



Moneyproperties bring to market this spacious and detached four-bedroom family home located on a desirable residential development within ease of access to the town centre, railway station, schools and amenities. Bought from new in 2017 the property comprises of an entrance hall, 18ft living room leading through to the separate dining room, kitchen and downstairs wc. Upstairs the property provides four well-proportioned bedrooms with an ensuite to bedroom one and a family bathroom off the landing. To the outside comes a 23ft garage with off-road parking with potential to create further parking spaces and a good-sized rear garden with patio area.

Key Features

- Spacious four bedroom detached family home
- Bought from new in 2017 with underfloor heating downstairs and radiators upstairs
- Four well-proportioned bedrooms with an ensuite to bedroom one
- Good-sized rear garden with patio area
- Offered with no onward chain
- Located on a popular residential development
- 18ft living room with a separate dining room
- 23ft garage with off-road parking and the potential to create more if required
- Ideally located for access to the town centre, railway station, schools and amenities
- See our full online listing for further details including flood risk, broadband speed and other material information.



Whilst every attempt has been made to ensure the accuracy of the floorplan contained here, measurements of doors, windows, rooms and any other items are approximate and no responsibility is taken for any error, omission or mis-statement. This plan is for illustrative purposes only and should be used as such by any prospective purchaser. The services, systems and appliances shown have not been tested and no guarantee as to their operability or efficiency can be given.
Made with Metropix ©2026