



Goodluck Hope Walk, E14

£650,000

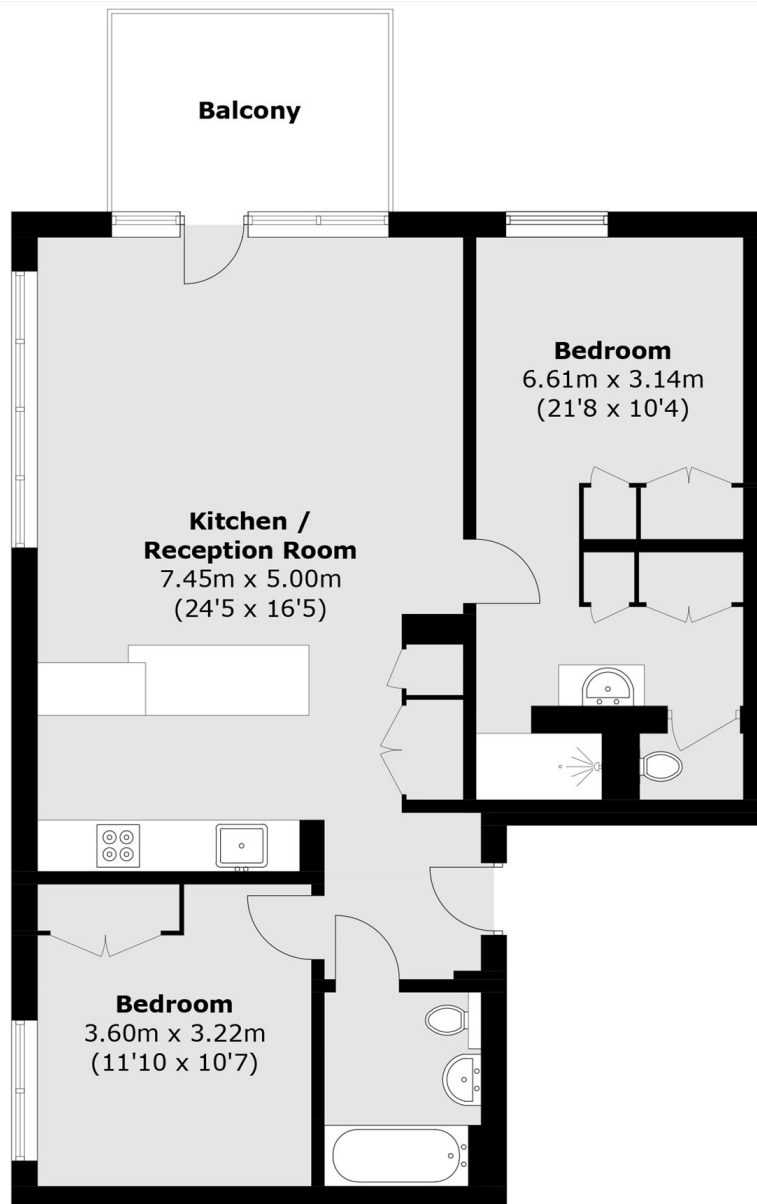
Offered to the market on a chain free basis is this well-proportioned two bedroom home, extending to approximately 846 sq ft of internal living space. The property features a private balcony with water views, a dual-aspect open-plan reception room, residents' leisure facilities and an on-site concierge service.

Ideally positioned on the banks of the River Thames in E14, Goodluck Hope offers excellent transport links. Canning Town Station (Jubilee Line & DLR) and the Elizabeth Line from Custom House provide swift access to Canary Wharf, the City of London and the West End.

Features

- 846 Square Feet
- Private Balcony
- Water Views
- Residents Leisure Facilities
- Concierge Service
- No Onward Chain

Goodluck Hope Walk, London, E14



Total area (approx.): 78.6 sq. m (846.0 sq. ft)
Balcony area : 7.6 sq. m (81.8 sq. ft)

Dexters

Canary Wharf
39 Westferry Road
London
E14 8JH
Sales
020 7517 1199

Energy Rating: B. We aim to make our particulars both accurate and reliable. However they are not guaranteed; nor do they form part of an offer or contract. If you require clarification on any points then please contact us, especially if you're traveling some distance to view. Please note that appliances and heating systems have not been tested and therefore no warranties can be given as to their good working order.

 **RICS** | Regulated
Estate Agent
and Letting Agent

dexters.co.uk