

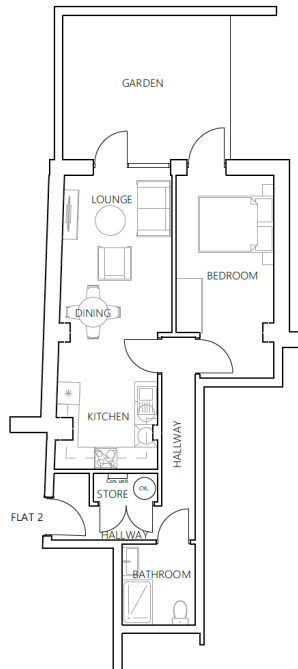
## Cynthia Ikeda Apartments, London, SE26 5HF

Guide Price £400,000

🛏️ 1 🚿 1 🚗 1



- Please Quote HM1127 For All Enquiries. Completion Q2 2026
- Guide Price £400,000-£450,000
- CGIs Are Used For Illustrative Purposes And Are Subject To Change As Development Progresses
- Off-Street Parking Is Available Just A Two-Minute Walk Away
- Access To An Expansive 2,200 Square Feet Of Elegantly Designed Communal Areas
- Triple-Glazed Windows
- This Unit Boasts A Private Garden Spanning 334 Square Feet
- Meticulously Designed To Blend Style With Accessibility. Step-Free Entry. Suitable For Individuals With Specific Access Needs
- Energy-Efficient Heating And Ventilation Systems
- Located Half A Mile From Sydenham Station, A 12/15-Minute Walk, With National Rail Services To London Bridge In 15 Minutes And The Overground To Canada Water In 16 Minutes



Flat 2 Layout Plan  
Scale 1:100

Please quote HM1127 for all enquiries. Guide Price £400,000–£450,000. Chain Free. A stunning one-bedroom apartment within the newly constructed Cynthia Ikeda Apartments, offering a private garden and access to beautifully landscaped communal gardens spanning approximately 2,200 sq. ft. Designed with both style and accessibility in mind, the apartment features step-free entry, wide doorways, spacious open-plan layouts, high-quality finishes, a modern kitchen, and an elegant bathroom with a level-access shower, combining luxury with practical living.