



Bye Road

EDENFIELD

Welcome Home

Nestled off a historic street in Shuttleworth, 37 Bye Road is a home that greets with both grandeur and warmth. The driveway curves gently downwards, offering ample space for visitors and private parking for two cars, while a community car park sits conveniently adjacent. Gorgeous original stone walls, hand-repointed by local stonemasons using traditional lime, frame the property; once a 19th-century mill store, now a unique landmark in the area and a home full of future memories.

Steps lead down to the front door, and a quaint path meanders through a picturesque iron gate, inviting you to wander alongside the house and soak in the tranquil surroundings. Top Mill Park hugs the property, providing unrivalled views of woodland, flowers, and wildlife. Deer, barn owls, bats, and kestrels are regular visitors, and the gentle chorus of birdsong is ever-present.





Light, Space & Character

Step inside to a spacious, welcoming hallway, where vibrant Victorian-style tiled flooring sets a lively tone. Partially glazed feature windows allow light to pour in, illuminating every corner.

Underneath the stairs, ample storage for shoes and coats keeps life effortlessly ordered, while the flooring flows seamlessly into the downstairs toilet, finished with metro tiles, grey hues, and clever shelving for extra storage.

Living Spaces For Every Chapter

Flow across the hallway to the lounge, where hardwood flooring and neutral walls create a canvas for personal style. Double aspect windows with bespoke plantation shutters frame views of the garden, filling the room with natural light. Designer radiators keep the space warm year-round, while a cosy snug overlooks the garden, a perfect spot for quiet reflection or lively conversation.

Continue through to the kitchen, passing a rear porch with feature mosaic tiling underfoot. A handy nook opposite the rear door is ideal for wiping mucky hands or paws after adventures in the park.

The dining kitchen is a culinary haven, with dual aspect windows, plantation shutters, and space for a full family and guests around the table. Here, mornings arrive gently and evenings glow quietly, as the bespoke kitchen, dressed in navy blue cabinetry and marble-effect worktops, wraps the space in a sense of calm and creativity. The breakfast bar, a natural gathering point, invites slow starts and lively conversation, while the quartz countertop gleams beneath the soft rhythm of daily life.

A mosaic of feature tiles underfoot leads the way to the utility area, where practical touches blend seamlessly with charm. Shelving and a butcher's block worktop offer a quiet choreography of elegance and ease, keeping linens, kitchenware, and everyday essentials close at hand.



A Quiet Space To Unwind

Ascend the staircase to a haven where brightness breathes life into every room. The first floor opens to a spacious bedroom currently used as a lounge, carpeted in plush softness and filled with light from dual aspect windows. Here, weekends seem to stretch just a little longer, and every gathering feels like a chapter in a cherished tale. Designer radiators keep the space warm, while neutral walls provide a blank canvas for new memories.



And So To Sleep

Continue along the first-floor hallway into the second bedroom, where large windows with plantation shutters frame woodland views, and tucked-away alcoves offer space for work, play, or quiet contemplation. Soft carpets underfoot and gentle hues on the walls create the same sense of ease that carries throughout the home.

The family bathroom is a blissful bathing retreat, fully tiled in soothing greys and accented with stylish black fixtures. A deep bath and drench shower invite moments of pause beneath the hush of fragrant waters, while cupboards below the sink keep the space beautifully uncluttered.





Cosy Corners & Woodland Views

Climb to the top floor, where roof lights and windows let daylight dance through the landing and bedrooms.

First on the left, discover a delightful room tucked into the eaves, a sanctuary where soft grey carpet cushions every step, and roof lights with manual blinds invite sunlight to spill in. This space, currently a nursery, is perfectly poised for transformation: a peaceful reading nook, a creative workspace, or a tranquil retreat for quiet moments. Generous eaves storage keeps treasures and essentials neatly tucked away, ensuring the room remains beautifully uncluttered.



Continue along the hallway to a serene double bedroom, where light green walls and soft grey carpet create a restful palette. A large window frames views over the garden and the lush expanse of the communal park, inviting the outdoors in and filling the space with a sense of calm and possibility. This is a room where mornings arrive gently, and evenings settle in golden quiet, a perfect haven for guests, family, or peaceful reflection.

Further down the hallway, step into a spacious bedroom where original beams stretch overhead, whispering stories of the home's 19th-century heritage. The same plush grey carpet continues underfoot, while black window features add a touch of modern drama. Gaze out over the garden and Top Mill Park in the distance, where deer and birds are frequent visitors. Ample space allows for restful nights, creative pursuits, or simply soaking up the tranquil views. Eaves storage and roof lights ensure the room is as practical as it is enchanting.



At the end of the hallway, a practical upstairs cloakroom awaits, finished in gentle greys, with large tiles underfoot and light grey walls. Black accents add a contemporary touch, while eaves storage provides space for linens and essentials. The cloakroom features a toilet and vanity unit, ensuring comfort and convenience for all who call the top floor home.

Nature's Embrace

Step outside into a garden that feels like a living poem. Stone walls and mature shrubs cocoon the space in privacy and perfume, while a winding path leads through levels of greenery and a generous lawn. Sunlight sprawls across the grass, inviting barefoot wanderings, games, or peaceful afternoons with a book. A large shed and log store stand ready for every season, and there's scope to create secret seating areas or even a hot tub beneath a canopy of stars.





Out & About

Set along Bye Road in Shuttleworth, this much-loved home enjoys a wonderful position where countryside calm meets easy access to thriving towns and village life. It's a location that appeals to families, walkers and anyone who values space, nature and a strong community feel — all while remaining well connected for work and leisure.

One of the true highlights of the area is the choice of excellent pubs, all within walking distance and all renowned for their food. The Fisherman's Retreat, The Duckworth Arms and The Eagle & Child each offer their own character, from cosy fireside lunches to relaxed evening dining — perfect for spontaneous walks followed by a well-earned meal.

For those who love the outdoors, the setting is exceptional. Step straight from the front door and you're surrounded by rolling hills, open fields and woodland trails, making it a popular base for walkers and dog owners alike. The surrounding countryside offers not only fresh air and exercise, but also regular wildlife sightings, with deer, barn owls, bats and kestrels often spotted close to home. Top Mill Park, which surrounds the property, is a real bonus for families, providing open green space right on the doorstep.

Despite its peaceful feel, Shuttleworth is superbly placed for day trips and family outings. Ramsbottom town centre is just a two-minute drive away, offering a range of supermarkets, independent shops, cafés and restaurants. Rawtenstall and Bury are also close by, opening up access to museums, farms, galleries and a host of family-friendly attractions, ensuring there's always something to do, whatever the season.

Everyday amenities are easily covered, with Ramsbottom providing everything from large supermarkets to local independents, while Bury and Rawtenstall further extend the shopping and leisure offering. You're never far from what you need, whether it's a quick top-up shop or a full day out.

Commuting is straightforward. Bye Road leads directly onto Whalley Road, which offers regular bus links to surrounding towns across Greater Manchester. The M66 is just a five-minute drive away, providing swift access to the M60 and M62 and making travel further afield simple and efficient.

Families are well supported by a good selection of schools nearby. Ramsbottom offers a number of well-regarded nurseries and primary schools, with Stubbins, Peel Brow and Edenfield all less than five minutes' drive away, making the school run both easy and flexible.

Renovated with family life firmly in mind, this home offers generous space across three floors — ideal for growing families who want room to socialise, relax and enjoy their own privacy. Perfectly positioned between open countryside and vibrant town life, 37 Bye Road offers a lifestyle that's active, connected and wonderfully balanced.

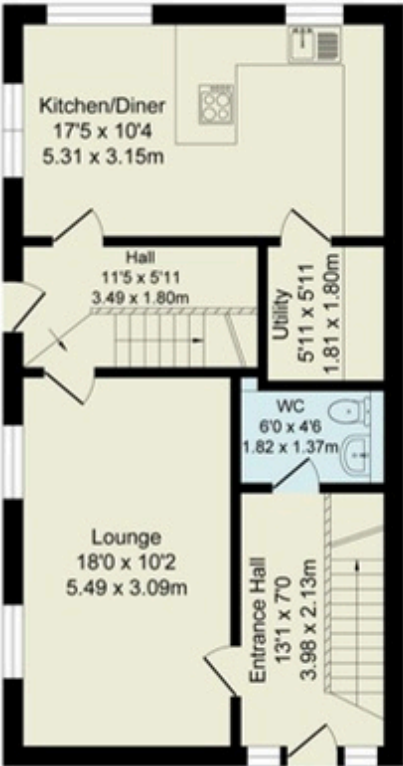
The Finer Details

- Stunning Stone Semi-Detached Five Bedroom Home
- Period Property in the Heart of Edenfield
- Modern Finish with Character Features
- Generous Light-Filled Lounge
- Kitchen Diner with Breakfast Bar
- Downstairs WC and Utility
- Driveway for Two Vehicles
- Surrounded by Countryside Views
- Bury Council Tax Band E
- Freehold

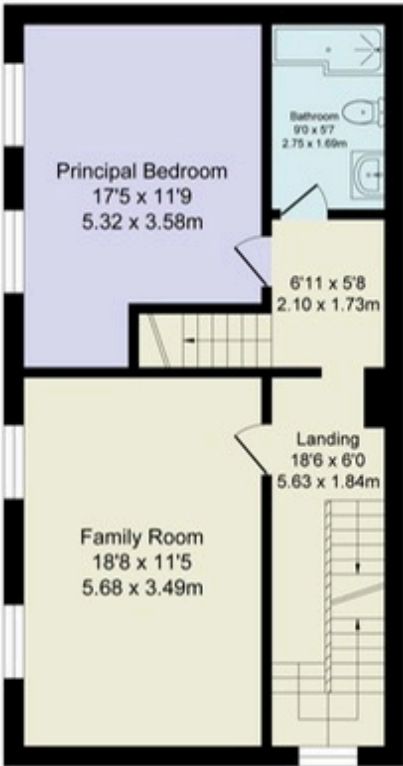
Score	Energy rating	Current	Potential
92+	A		
81-91	B		82 B
69-80	C		
55-68	D	65 D	
39-54	E		
21-38	F		
1-20	G		

Total Approx. Floor Area 1860 Sq.ft. (172.8 Sq.M.)

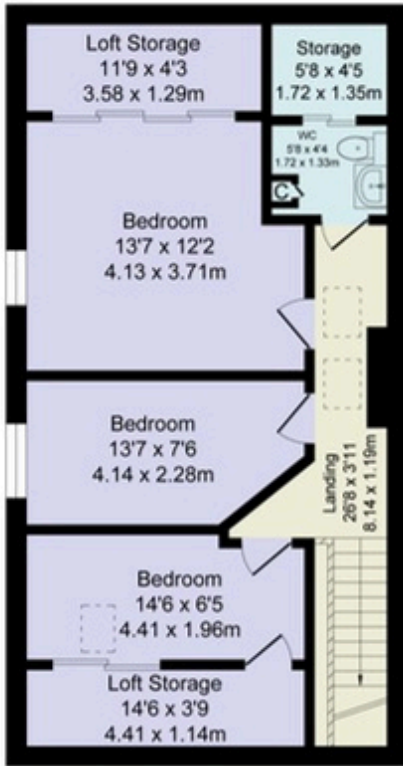
Surveyed and drawn by Lens Media for illustrative purposes only. Not to scale. Whilst every attempt was made to ensure the accuracy of the floor plan, all measurements are approximate and no responsibility is taken for any error.



Ground Floor
Approx. Floor Area 620 Sq.Ft (57.6 Sq.M.)



First Floor
Approx. Floor Area 620 Sq.Ft (57.6 Sq.M.)



Second Floor
Approx. Floor Area 620 Sq.Ft (57.6 Sq.M.)



WAINWRIGHTS

ESTATE AGENTS

To view Bye Road,
Call 01204 773556 or email sales@wainwrightshomes.com