



Price
£275,000

Freehold

3x  1x  1x 

**Goldfinch Close,
Faversham, Kent, ME13**

OVER 60?

Secure this property
for up to **59% less!**

Wards
Helping you move forwards



Main features

- Modern well equipped home
- Lovely good quality kitchen/diner
- Recently refurbished interior with lots of natural light
- Located within easy reach of the town centre, shops and schools
- Perfect first or young family home

Accommodation

GROUND FLOOR

Entrance Porch
Entrance Hall
Lounge: 15'8 x 10'9 (4.78m x 3.28m)
Kitchen/Diner: 15'3 x 9'5 (4.65m x 2.87m)

FIRST FLOOR

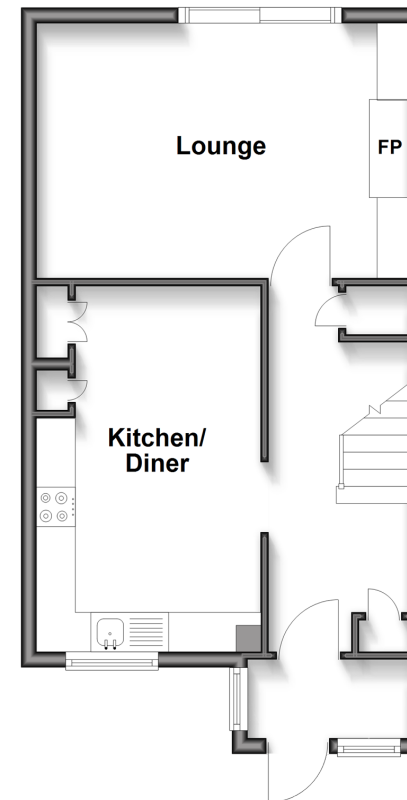
Landing
Bedroom 1: 15'2 x 8'6 (4.63m x 2.59m)
Bedroom 2: 11'1 x 6'8 (3.38m x 2.03m)
Bedroom 3: 9'7 x 6'10 (2.92m x 2.08m)
Bathroom
Separate Toilet

OUTSIDE

Front and Rear Gardens

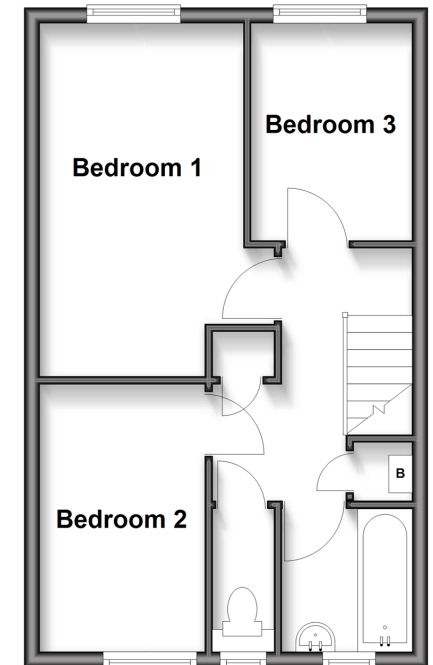
Ground Floor

Approx. 40.4 sq. metres (435.0 sq. feet)



First Floor

Approx. 38.1 sq. metres (410.6 sq. feet)



Call Faversham - 01795 535517 ■ wardsofkent.co.uk

- Legal advice should be taken to verify fixtures/fittings, planning, alterations and/or lease details
- Appliances & services are untested, dimensions are approximate and floor plans are not to scale
- Through a Homewise Home For Life Plan people aged 60+ can secure this property for up to 59% less, by purchasing a Lifetime Lease.



10820316/20250529/PJ/PJ