



TOWNSEND

LETTING & MANAGEMENT

St Andrews View, Taunton

£725 PCM

1 Bedroom Flat - Second Floor

Available 8th July 2026





£725 PCM
Council Tax Band A

Deposit £836
Floor Area 376.74 sq ft

- Near train station
- Secure cycle storage
- Ready beginning January

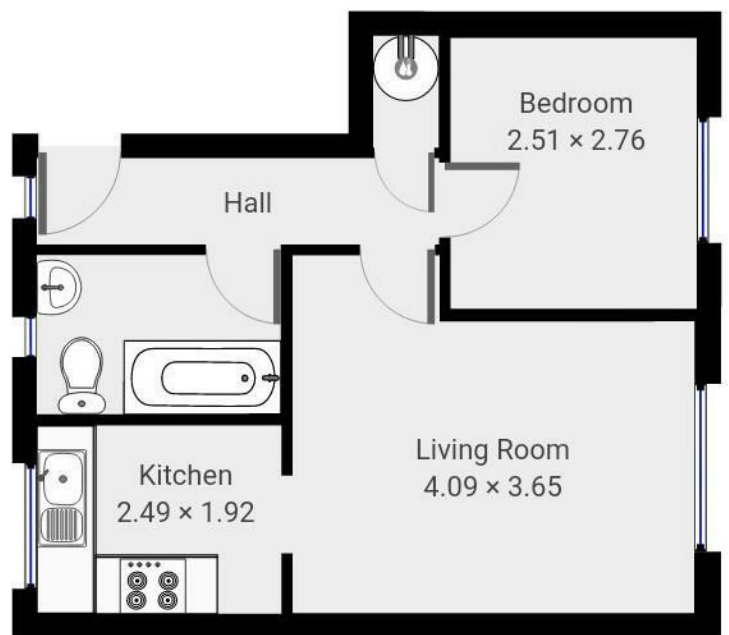
TOWNSEND LETTING & MANAGEMENT are pleased to offer this purpose built second (top) floor one bedroom apartment in this quiet and convenient block in north Taunton.

The accommodation comprises an entrance hallway, lounge, kitchen, double bedroom and shower room.

The property benefits from a secure telephone entry system, electric storage heating, allocated parking for one car and communal gardens. There is also uPVC double glazing. There is a lockable shed for the storage of residents bicycles.

It is handy for the train station being a 3 minute walk away and just 10 minutes from the town centre.

SUIT SINGLE PERSON ONLY, NO SMOKERS OR PETS



Energy Efficiency Rating		Current	Potential
Very energy efficient - lower running costs			
(92 plus) A			
(81-91) B			
(69-80) C		75	79
(55-68) D			
(39-54) E			
(21-38) F			
(1-20) G			
Not energy efficient - higher running costs			
England & Wales		EU Directive 2002/91/EC	