



15 Hillside Road, Hinckley, LE10 2LX
£285,000

wards
Residential

Freehold

NO CHAIN. This two bedroom semi-detached bungalow is nicely situated in a cul de sac within easy reach of Burbage village centre, local amenities, schools, and excellent transport links via the M69. Offers spacious single-storey living on desirable plot with landscaped front and rear gardens, off-road parking, and a garage. The accommodation comprises an entrance hall, a generous lounge, modern fitted kitchen, two well-proportioned bedrooms and a family bathroom. The bungalow is well-maintained throughout, with potential to update or extend (subject to relevant permissions) to suit modern lifestyles.

Entrance Hall

With UPVC panelled door with access to the living room, two bedrooms, bathroom.

Kitchen

3.14 x 2.75 Meters

Fitted with wooden wall and base units, contrasting work surfaces, stainless steel sink and drainer, tiled flooring, gas hob, double oven, extractor fan, tiled splash backs, UPVC double glazed windows to the rear and side elevation and door leading to the garden.

Living Room

4.53 x 4.28 Meters

Bright and spacious living area with UPVC French doors to the rear garden, carpeted flooring and access of to the kitchen and hallway.



Master Bedroom

3.94 x 3.21 Meters

Spacious bedroom that runs the full width of the property with dual aspect UPVC double glazed window overlooking the front elevation. Furnished with a wide range of fitted furniture including wardrobes, drawers and a dressing table. Fitted with carpeted flooring.

Bedroom 2

3.33 x 3.07 Meters

Additional double bedroom with bay fronted UPVC window to the front elevation. Fitted with carpeted flooring.

Bathroom

2.26 x 1.78 Meters

Three-piece suite comprising a low level wc, wash hand basin and bath. Tiling around wet areas and cupboard housing the boiler. UPVC double glazed window to the side elevation.





Garage

6.75 x 2.91 Meters

Large detached brick-built garage with up and over door, light and power.

Outside

The property is nicely situated in a cul de sac, set back from the road with a tarmac driveway, mature shrubs and is enclosed by timber double gates. The rear gardens themselves are predominantly laid to lawn, with patio areas adjacent to the dwelling, the whole being enclosed with a mixture of mature shrubs, hedging and timber fencing.



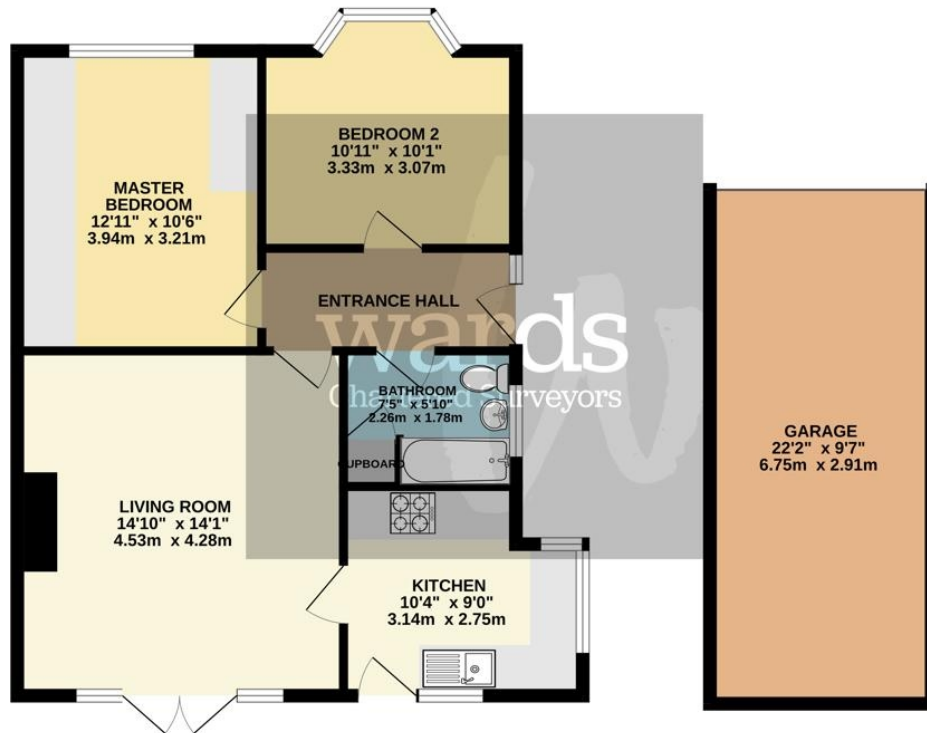
EPC Rating - D (63)

Council Tax Band - C

Call 01455 251771 to make an appointment to view this property



GROUND FLOOR
828 sq.ft. (76.9 sq.m.) approx.



20 Station Road
Hinckley Leicestershire LE10 1AW

01455 251771
info@wardsonline.co.uk

wardsonline.co.uk



These particulars, whilst intended & believed to be accurate are set out as a general outline only and do not constitute any part of an offer or contract. Intending purchasers should not rely on them as statements of representation of fact, but must satisfy themselves by inspection or otherwise as to their accuracy. No person in this firm's employment has the authority to make or give any representation or warranty in respect of the property.

Ward Surveyors Limited - Registered in England No.4567836