



6 Upperfield Grove

Corby, NN17 1HN



**Simpson West**

Occupying a pleasant position within a popular Lloyds cul-de-sac, this three-bedroom family home presents an exciting opportunity for buyers looking to create their ideal home. Offered to the market with the advantage of no onward chain, the property offers excellent potential for extension and enhancement, subject to the necessary planning permissions.

The accommodation comprises a welcoming entrance hall, a useful utility room with cloakroom/WC, a spacious living and dining room providing an excellent space for both everyday family life and entertaining, and a fitted kitchen overlooking the garden.

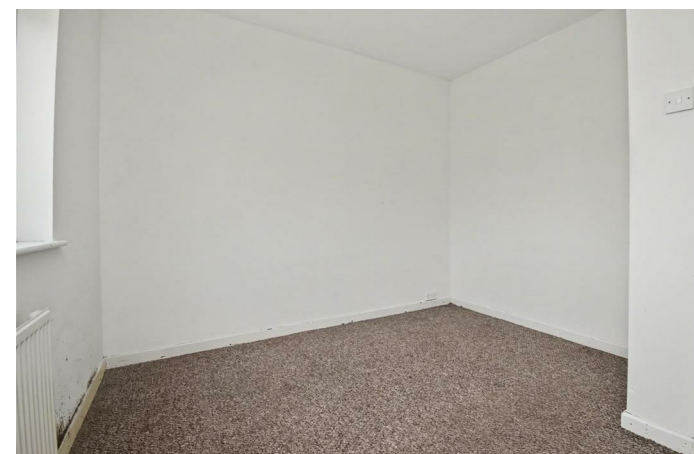
To the first floor are two generous double bedrooms, a well-proportioned single bedroom, and a family bathroom serving all three bedrooms.

Externally, the property truly sets itself apart. Occupying a generous plot, the substantial wraparound gardens offer a wealth of possibilities, whether you're looking to extend the existing accommodation, create stunning landscaped gardens, or introduce off-road parking (subject to the relevant consents). The outdoor space provides a rare opportunity to add significant value while tailoring the property to suit your own lifestyle and requirements.

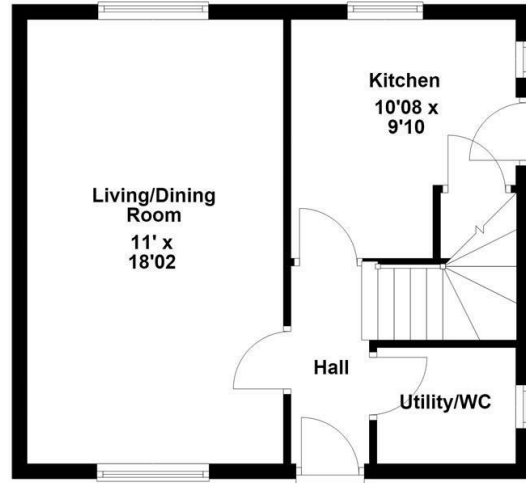
Combining an enviable position, generous outside space, and outstanding scope for improvement, this is a home with tremendous potential in a highly regarded residential location. Early viewing is highly recommended to fully appreciate the opportunity on offer.



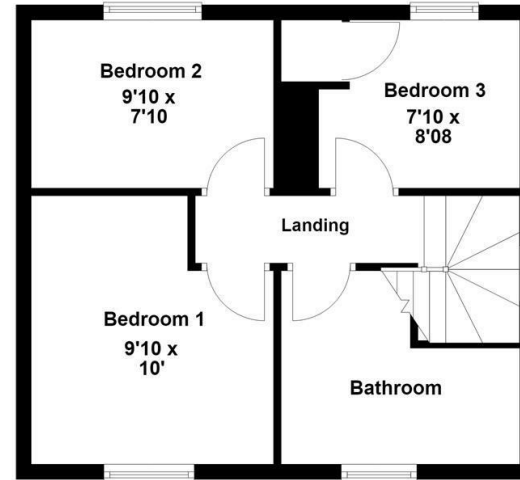
£190,000




**Ground Floor**



**First Floor**



**Energy Efficiency Rating**

	Current	Potential
<i>Very energy efficient - lower running costs</i>		
(92 plus) <b>A</b>		
(81-91) <b>B</b>		
(69-80) <b>C</b>		
(55-68) <b>D</b>		
(39-54) <b>E</b>		
(21-38) <b>F</b>		
(1-20) <b>G</b>		
<i>Not energy efficient - higher running costs</i>		
<b>England &amp; Wales</b>	EU Directive 2002/91/EC 	



When you buy with Simpson West, you know **you'll be in safe hands**. From the moment you walk through our doors, we'll make you **feel truly welcome**. Our sales consultants and financial advisors will take you through **every step of the process**, offering **free expert advice** along the way, from help choosing the right mortgage and insurance through to finding your conveyancer. And if you need help selling your home too, **with over 20 years of local experience, you can trust us to get you moving**.



**Simpson  
West**

Making Every  
Journey Personal



01536 202007

[info@simpsonwest.co.uk](mailto:info@simpsonwest.co.uk)

<https://www.simpsonwest.co.uk/>

64 Corporation Street, Corby, Northants, NN17 1NH