

Flat - Council Tax Band B - EPC Rating: D

**83 CHURCH RD (FLAT 7), MOSELEY,
BIRMINGHAM, B13 9EB**
Per Month

£1,050 Per

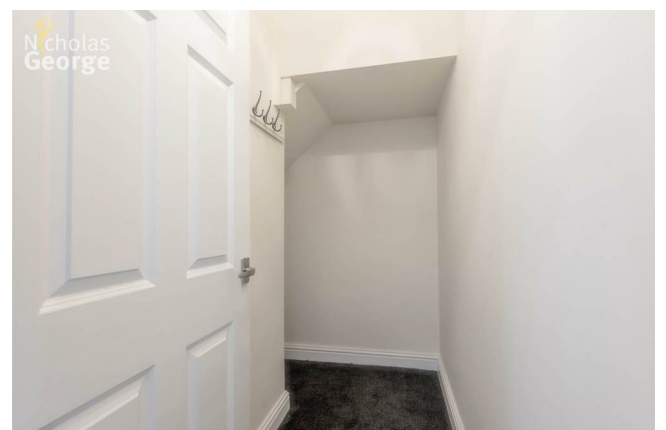


83 CHURCH RD (FLAT 7), MOSELEY, BIRMINGHAM, B13 9EB

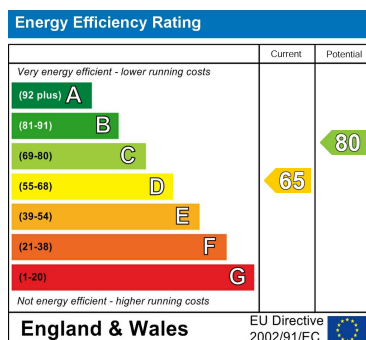
*** Initial enquiries should be made on line via one of the portals ***

***AVAILABLE 1ST JULY - SHORT WALK TO MOSELEY VILLAGE - OFF ROAD PARKING - NEW CARPETS & RE-PAINTED THROUGHOUT *** This excellent ground floor flat is situated just minutes walk from the centre of Moseley village with great transport links to the city by rail or bus. Comprises: Very large open plan lounge and fitted kitchen with new worktops, with appliances to include cooker, fridgefreezer and washing machine. 2 spacious double bedrooms, one with doors onto patio area. The bathroom is currently having new aqua panel fitted, with shower over bath. Electric heating and double glazing. Off street parking for 1 car. Available 1st July.

Alto Ref 19127658



Energy Performance Graph



Contact us:

Phone: 0121 442 2049

Email: sales@nicholasgeorge.co.uk

Tenure:

We understand the property is with XXX years remaining but interested parties should obtain verification from their own solicitor.

Fees:

We have been informed that annual service charge is £XXX and annual ground rent is £XXX.

Agents Note: Whilst every care has been taken to prepare these particulars, they are for guidance purposes only. All measurements are approximate and are for general guidance purposes only and whilst every care has been taken to ensure their accuracy, they should not be relied upon and potential buyers are advised to recheck the measurements.

Council tax band B.

