



AWARDED FOR  
MARKETING | SERVICE | RESULTS



**36 Blairhead Drive, Watford**

Fixed Price **£450,000**



**F** fairfieldestates



## 36 Blairhead Drive

Watford, Watford

A BEAUTIFULLY PRESENTED TWO DOUBLE BEDROOM FREEHOLD HOUSE OFFERED TO THE MARKET WITH NO UPPER CHAIN & IDEALLY LOCATED ON A QUIET RESIDENTIAL ROAD IN SOUTH OXHEY.

Fairfield Estates are delighted to present this attractive family home, set on a peaceful and popular residential street. The property benefits from a generous block-paved front garden and a well-maintained, north-east facing private rear garden. Conifer screening to the rear provides an excellent level of privacy.

Internally, the home is presented in excellent decorative order throughout. The ground floor comprises a spacious lounge and a modern kitchen/breakfast room, fitted with a range of base and eye-level units, integrated appliances, and direct access to the rear garden. To the first floor are two well-proportioned double bedrooms and a fully fitted family bathroom.

Further benefits include double-glazed windows and gas central heating throughout.

Blairhead Garden is conveniently located close to local schools and shops, with excellent transport links nearby. Carpenders Park, Moor Park, and Northwood stations are all easily accessible, offering direct and reliable connections into Central London via the Metropolitan Line and the Watford Lioness Line.

Viewings are highly recommended strictly by appointment only.



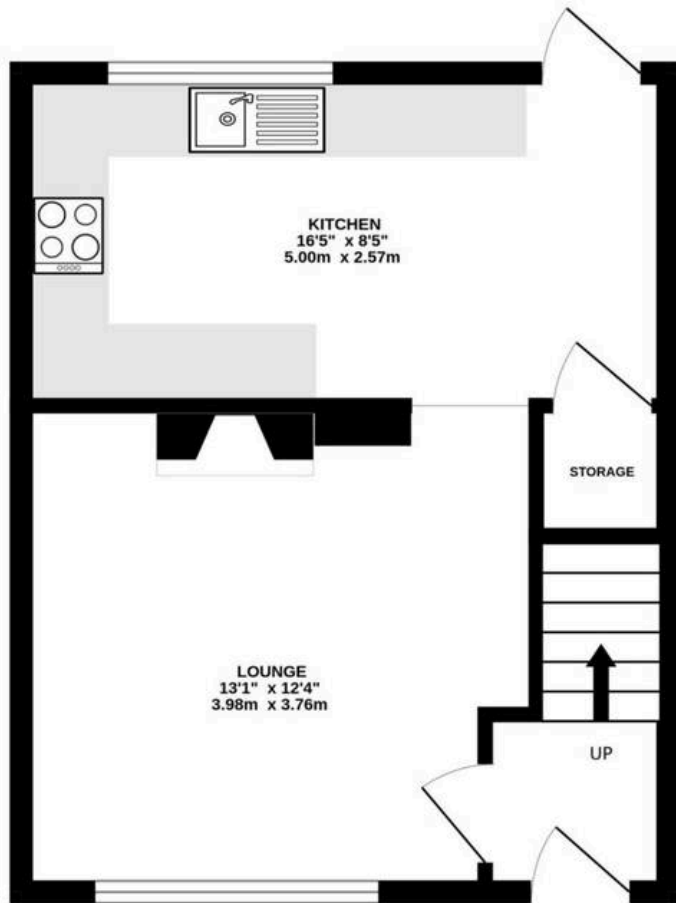




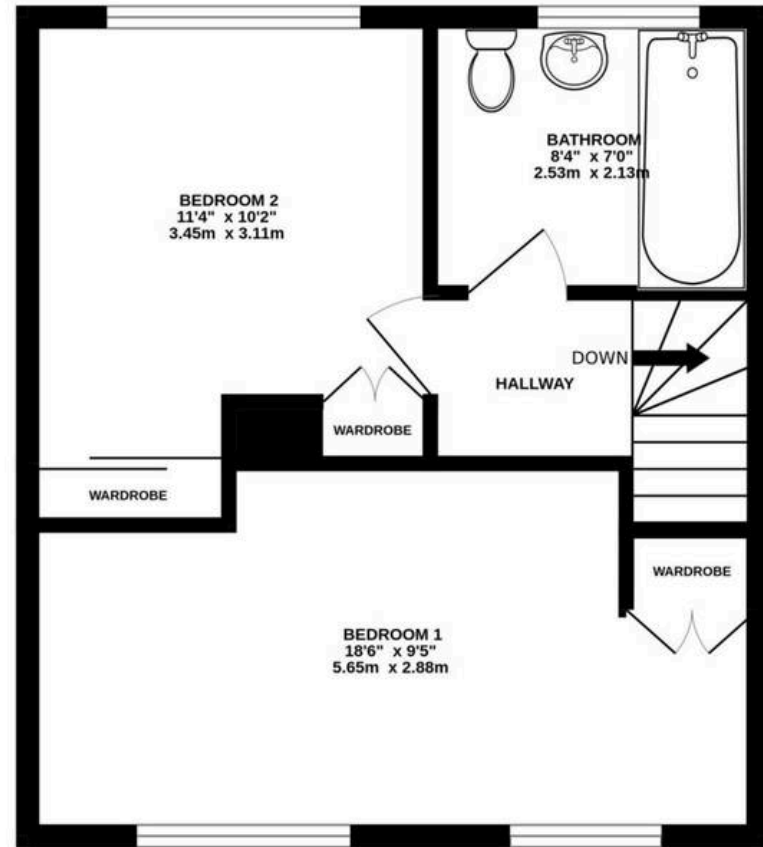




GROUND FLOOR



1ST FLOOR



Whilst every attempt has been made to ensure the accuracy of the floorplan contained here, measurements of doors, windows, rooms and any other items are approximate and no responsibility is taken for any error, omission or mis-statement. This plan is for illustrative purposes only and should be used as such by any prospective purchaser. The services, systems and appliances shown have not been tested and no guarantee as to their operability or efficiency can be given.  
Made with Metropix ©2026

