

Frank Harris & Co.



Whitehall, WC1A

£3,000 pcm

Set within an elegant period building with lift access and views over Bloomsbury Square, this well-proportioned apartment offers a spacious reception/dining room with high ceilings, a separate kitchen, a generous bedroom with ample storage.

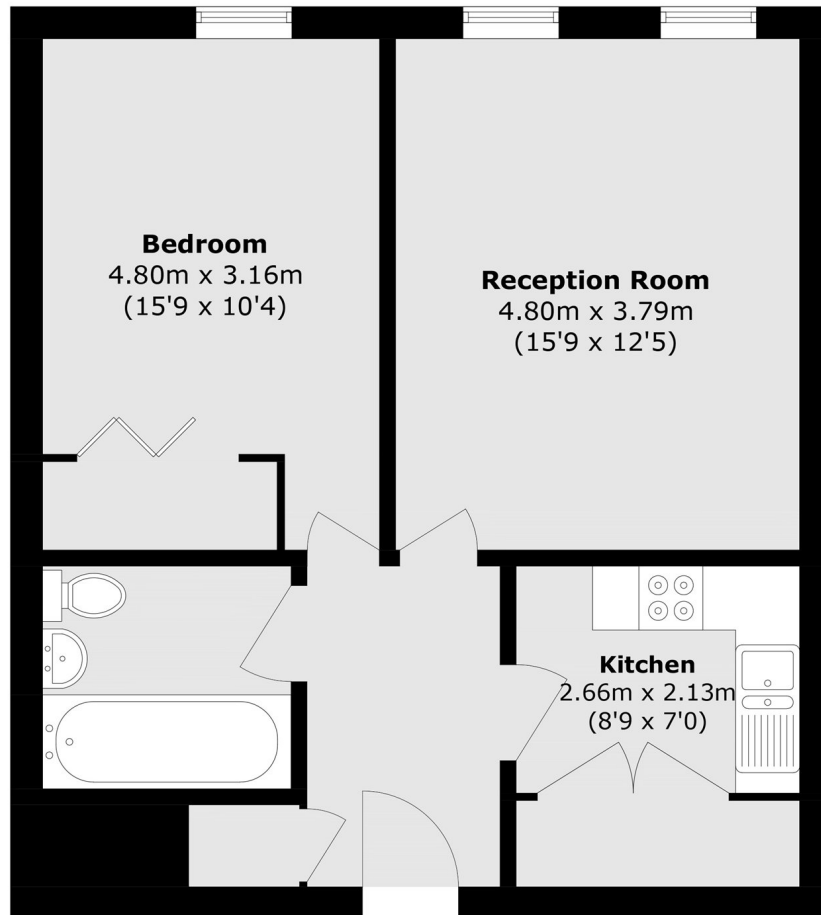


Whitehall is close to the green open spaces of Lincoln's Inn Fields and the renowned British Museum. Excellent transport links are available via Holborn and Russell Square, while a wide selection of shops, cafés, and everyday amenities can be found throughout Bloomsbury and nearby Covent Garden.

- Period Building • Concierge • Stunning Views •
- Lift access • Garden square • Prime Bloomsbury •



Frank Harris & Co.



Third Floor

Total area (approx.): 56.5 sq. m (608.1 sq. ft)

Frank Harris & Co. Bloomsbury and Kings Cross
81 Marchmont Street, London,
WC1N 1AL
020 7387 0077
bloomsburylettings@frankharris.co.uk

Energy Rating: C. We aim to make our particulars both accurate and reliable. However they are not guaranteed; nor do they form part of an offer or contract. If you require clarification on any points then please contact us, especially if you're traveling some distance to view. Please note that appliances and heating systems have not been tested and therefore no warranties can be given as to their good working order.

