

Living  
made  
better

Marsden House  
Kidbrooke, SE3 9FW



Offers In Excess Of £450,000

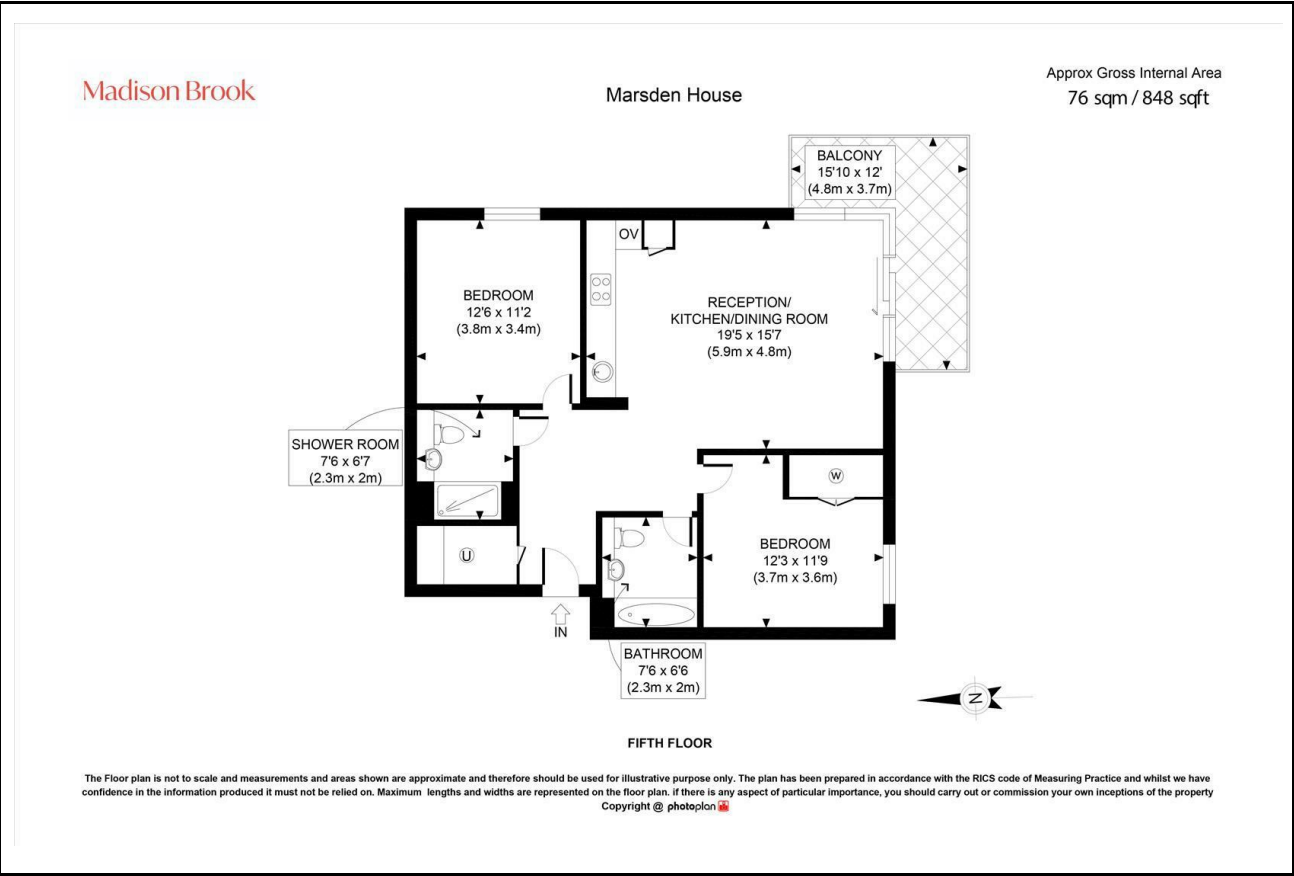
# Marsden House, Kidbrooke, SE3 9FW

Madison Brook

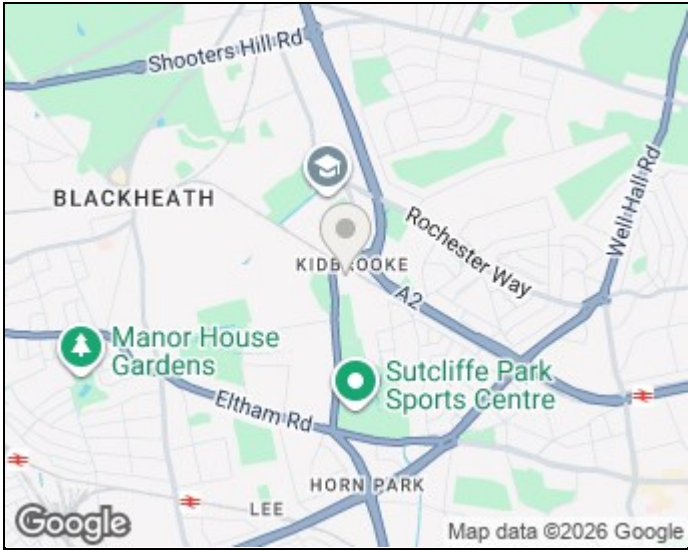
## Property Summary

A stylish and spacious two-bedroom, two-bathroom apartment set in the desirable Kidbrooke Village by Berkeley Homes. This fifth-floor corner unit offers a bright open-plan living area, a south-facing balcony, and a modern fitted kitchen with integrated appliances. The principal bedroom includes an en-suite and fitted wardrobe, while residents benefit from 24/7 concierge, gym, communal gardens, and excellent transport links via nearby Kidbrooke Station. Offered chain-free.

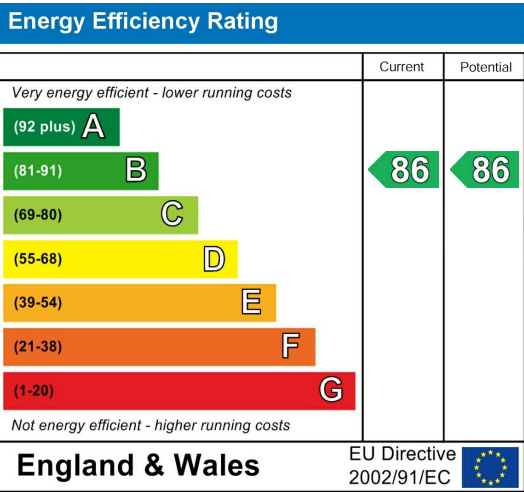
## Floorplan



## Area Map



## Energy Efficiency Graph



These particulars, whilst believed to be accurate are set out as a general outline only for guidance and do not constitute any part of an offer or contract. Intending purchasers should not rely on them as statements of representation of fact, but must satisfy themselves by inspection or otherwise as to their accuracy. No person in this firm's employment has the authority to make or give any representation or warranty in respect of the property.

43 Loampit Vale, Lewisham, London, SE13 7FT  
Tel: 020 3946 6200 Email:  
lewisham@madisonbrook.com  
<https://madisonbrook.com/>