



**Chatsworth Place, TW11**

**£800,000**

**Dexters**



## Chatsworth Place, TW11

Offers In Excess of- This delightful three-bedroom house is nestled in the centre of Teddington, ideally situated for transport links and school catchment. Having been recently renovated throughout to a high specification, this house exudes character and charm.

Downstairs offers excellent open-plan living space that has been designed with families in mind. At the front is an elegant reception that leads onto a beautifully presented kitchen/dining space. The ground floor also has a shower room, creating a versatile area that is perfect for both relaxation and entertaining. Bi-folding doors from the kitchen lead onto a secluded garden space.

Upstairs is a spacious master bedroom, complete with fitted wardrobes and two further bedrooms. The bathroom has been recently refurbished to a high standard and this property also had the added benefit of unallocated off street parking, as well a separate garage. Perfect for families, couples, or those looking for a home office setup, this is not a property to be missed.

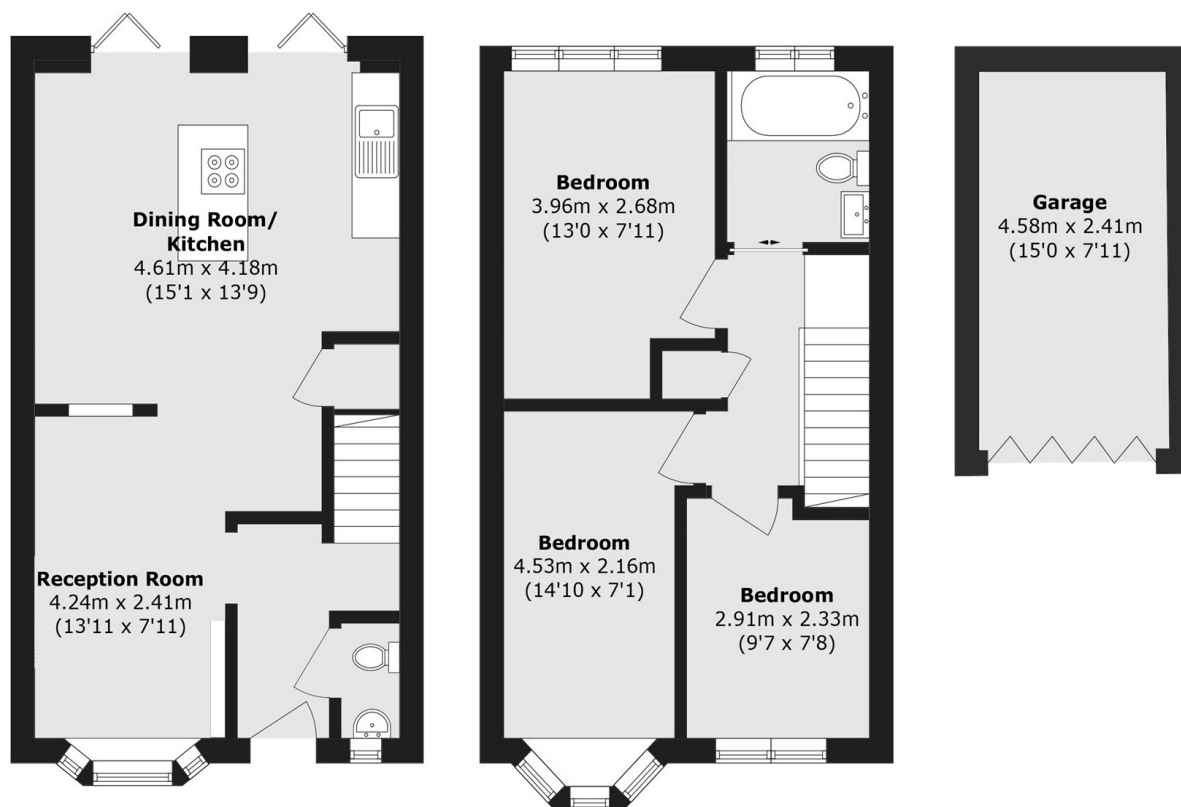
Situated in a quiet cul-de-sac, this home enjoys a superb location with easy access to Teddington High Street via Cambridge Road, close proximity to the River Thames, excellent school catchments and Teddington mainline station.

### Features

- Central Location
- Three Bedrooms
- High Spec Finish
- Cul-De-Sac
- Close to Transport Links
- Garage



# Chatsworth Place, Teddington, TW11



**Ground Floor**

**First Floor**

Total area (approx.): 75.9 sq. m (816.9 sq. ft) → →  
Garage area (approx.): 11.1 sq. m (119.4 sq. ft)