



Maple Avenue, Gillingham ME7 2NT

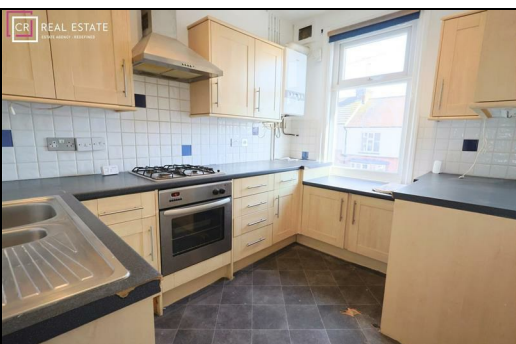
£935 Per Calendar Month

Spacious Split-Level Flat with Shared Garden. This larger-than-average flat is arranged over two floors, offering generous living space throughout. Upon entry, you are welcomed into a reception room, with stairs leading to the upper level. Upstairs features a bright and spacious lounge, a well-proportioned double bedroom, a separate kitchen, and a bathroom. The property also benefits from access to a shared garden, enjoyed with just one other flat—perfect for outdoor relaxation.

CR Real Estate are part The Ombudsman Redress Scheme and are a member of the Propertymark Client Money Protection Scheme. Tenant deposits are protected by the Tenancy Deposit Scheme. For more information, please contact us.

Client Money Protection is provided by: Client Money Protect. Scheme Ref: CMP004209

Independent redress is provided by: The Property Ombudsman (TPO). Membership Number: E01687



Energy Efficiency Rating		Current	Potential
Very energy efficient - lower running costs			
(92 plus) A			
(81-91) B			
(69-80) C			
(55-68) D			
(39-54) E			
(21-38) F			
(1-20) G			
Not energy efficient - higher running costs			
England & Wales		EU Directive 2002/91/EC	

Environmental Impact (CO ₂) Rating		Current	Potential
Very environmentally friendly - lower CO ₂ emissions			
(92 plus) A			
(81-91) B			
(69-80) C			
(55-68) D			
(39-54) E			
(21-38) F			
(1-20) G			
Not environmentally friendly - higher CO ₂ emissions			
England & Wales		EU Directive 2002/91/EC	



ESTATE AGENCY : REDEFINED

