



8 Roman Avenue, Blandford St Mary, Dorset, DT11 9FU



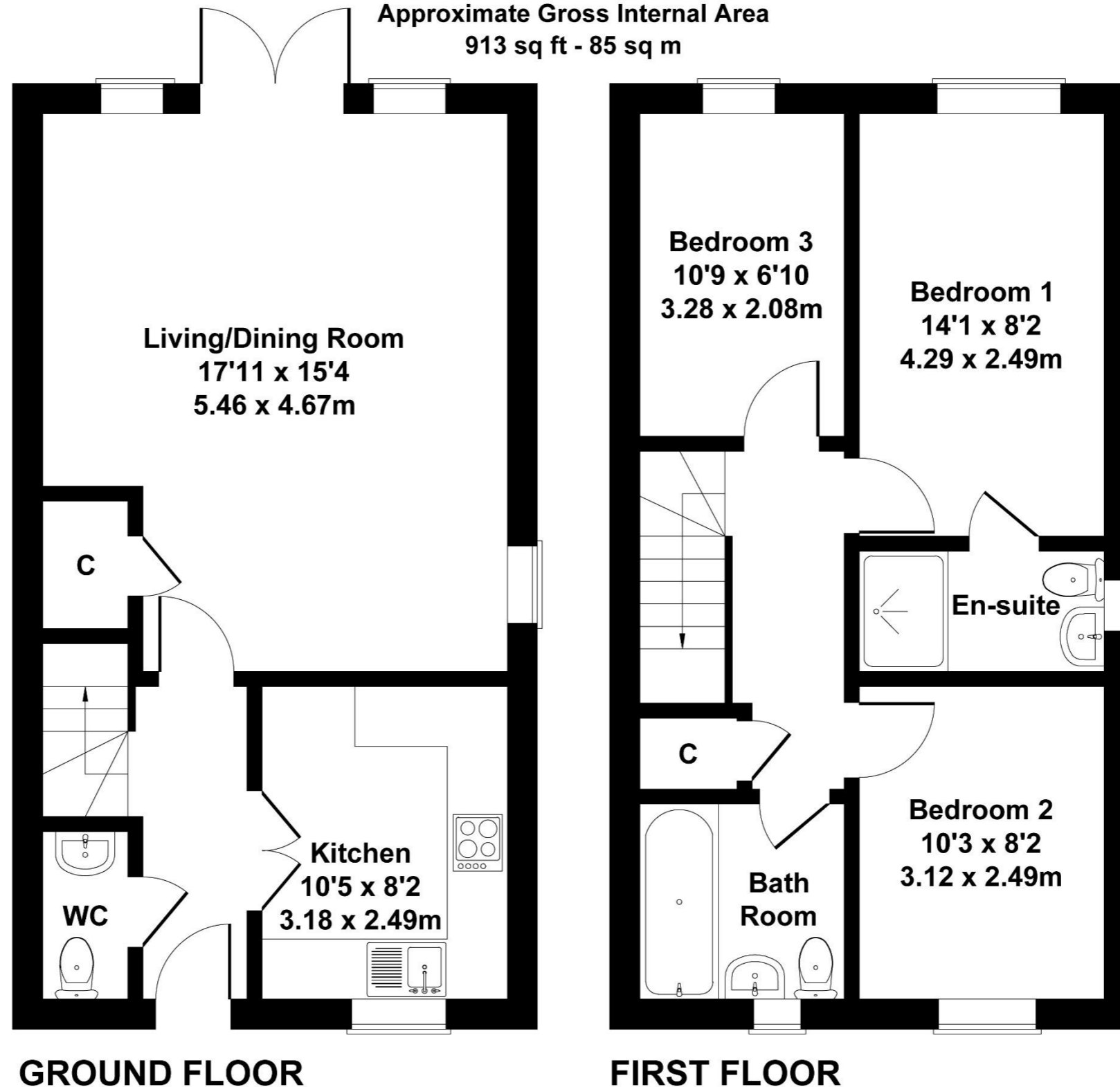


A modern 3 bedroom semi-detached house situated on this popular development on the outskirts of Blandford Forum offering a master bedroom with en-suite

This modern semi-detached home combines contemporary style with practical living in a sought-after residential setting. The entrance opens into a bright hallway leading to a sleek, well-appointed kitchen with glossy cabinetry, integrated appliances, and generous worktop space, perfectly designed for everyday use. To the rear, a spacious living and dining area forms the heart of the home, filled with natural light from French doors that open onto the garden, creating a seamless connection between indoor and outdoor spaces. Upstairs, the main bedroom enjoys its own en-suite shower room, while two further bedrooms and a stylish family bathroom provide comfort and flexibility for a range of lifestyles. Outside, the property benefits from a private driveway, and a fully enclosed rear garden offering a safe and sunny retreat. Finished throughout in neutral tones with a modern specification, this home is ready to move into and ideal for those seeking a blend of convenience and contemporary design.

8 Roman Avenue

Approximate Gross Internal Area
913 sq ft - 85 sq m



Not to Scale. Produced by The Plan Portal 2025
For Illustrative Purposes Only.

Please note Forum Sales & Lettings and their client give notice that:

1. They have no authority to make or give any representation or warranties in relations to the property. These particulars do not form part of any offer or contract and must not be relied upon as statements or representations of fact.

2. Any areas, common measurements or distances are approximate. The text, photographs and plans are for guidance only and are not necessarily comprehensive. It should not be assumed that the property has all necessary Planning, Building Regulations or other consents and Forum Sales and Lettings have not tested any services, equipment or facilities. Purchasers must satisfy themselves by inspection or otherwise.

EPC Rating - B

Viewing Arrangements - Strictly by appointment with Forum Sales & Lettings

15 Salisbury Street, Blandford Forum, Dorset, DT11 7AU

Tel: 01258 459600