

Ravenswood Park

Northwood • Middlesex • HA6 3PR

PCM: £4,000 PCM



coopers
est 1986



We are delighted to present to the market this RARELY AVAILABLE four bedroom DETACHED family home set in a HIGHLY SOUGHT AFTER cul-de-sac in the heart of Northwood. Situated within WALKING DISTANCE to Northwood town centre and Metropolitan Line station, this superb property briefly comprises: welcoming entrance hall, large lounge, generously proportioned dining room, fitted kitchen, downstairs WC, three double bedrooms with fitted wardrobes (en suite bathroom to master), additional single bedroom and family bathroom. This spacious property also enjoys off street parking, double garage and a larger than average private rear garden.

Offered Unfurnished and available in May

Local Authority: London Borough of Hillingdon
Council Tax: Band G

NEWLY DECORATED

Detached

Close to Northwood HQ (NATO)

Off street parking

Private garden

Highly sought after cul-de-sac location

Double garage

Downstairs WC

Unfurnished

Available Immediately

Available Date

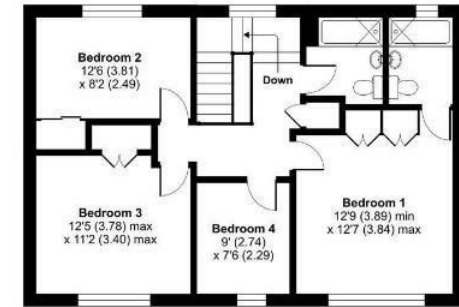
29th May 2026



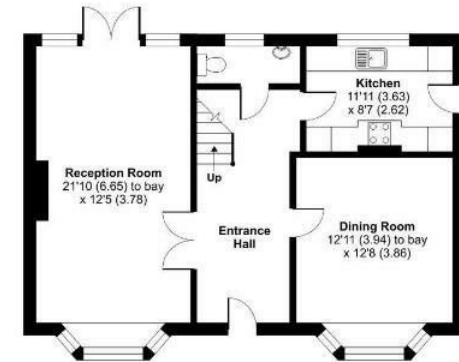
Ravenswood Park, Northwood, HA6

Approximate Area = 1530 sq ft / 142.1 sq m

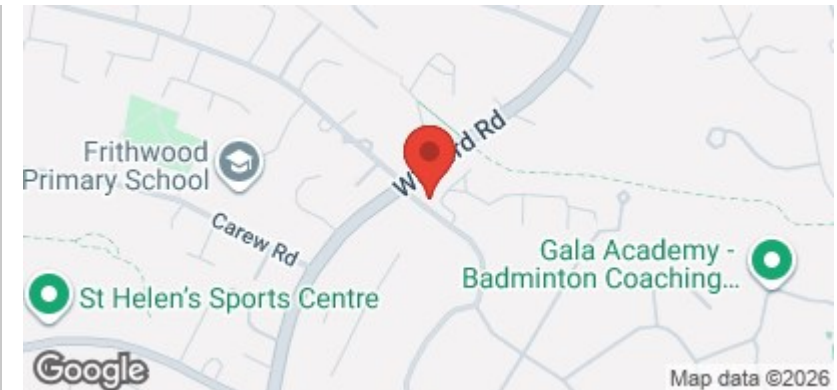
For identification only - Not to scale



FIRST FLOOR



GROUND FLOOR

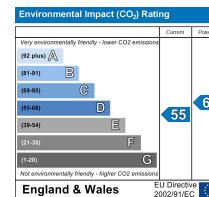
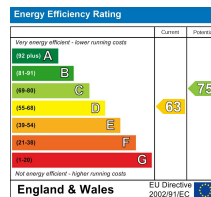


0208 017 6000

**18 Bridge Street, Pinner,
Middlesex, HA5 3JF**

pinner@coopersresidential.co.uk

CoopersResidential.co.uk



Important Notice: These particulars, whilst believed to be accurate are set out as a general outline only for guidance and do not constitute any part of an offer or contract. Intending purchasers should not rely on them as statements or representation of fact, but must satisfy themselves by inspection or otherwise has the authority to make or give any representation or warranty in respect of the property.

coopers
est 1986