

**ESON 2.**

**R E A L E S T A T E**

29, 31 Draycott Avenue, LONDON, SW3





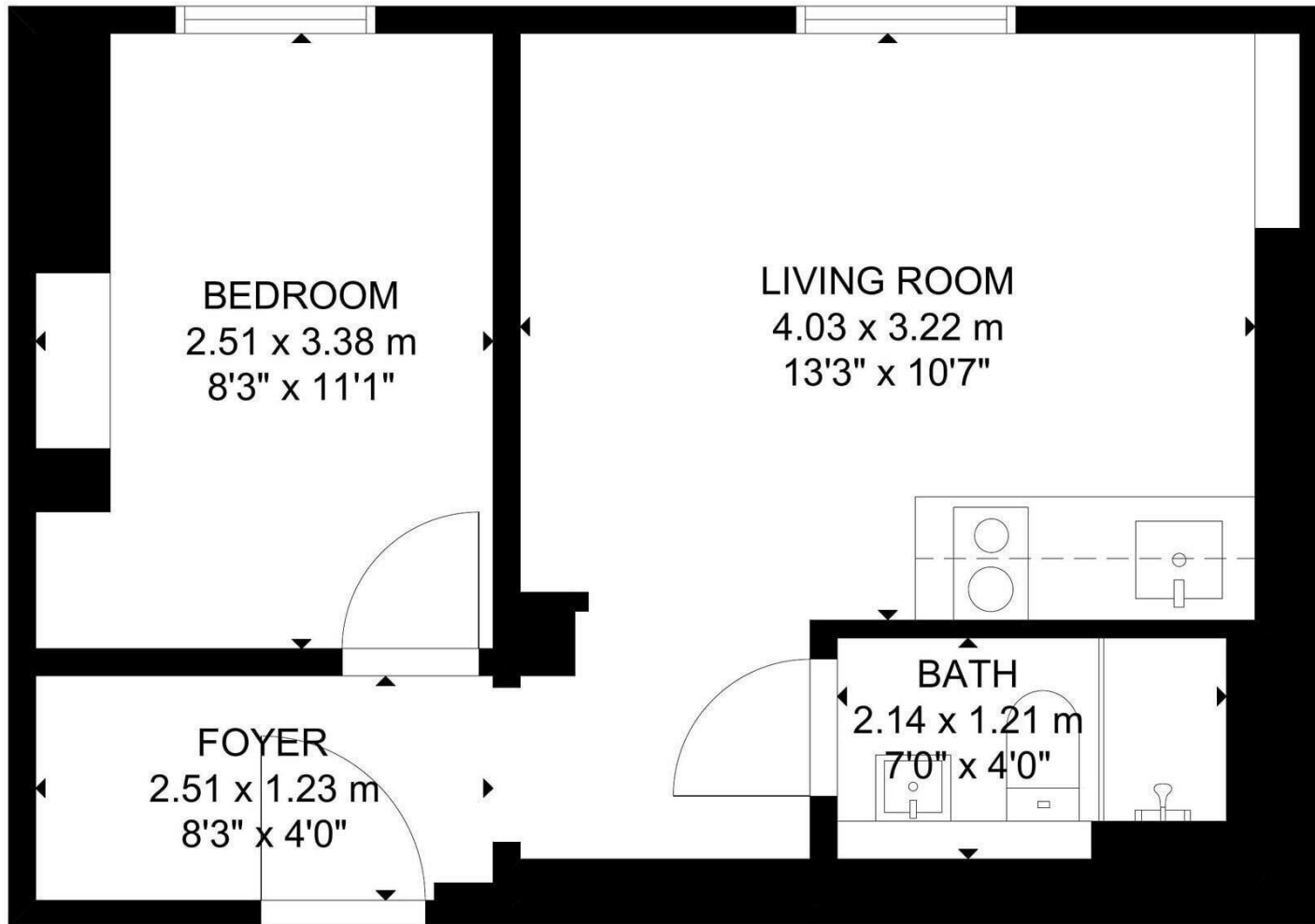












THIRD FLOOR

GROSS INTERNAL AREA  
TOTAL: 30 m<sup>2</sup>/324 sq ft  
GROUND FLOOR: 30 m<sup>2</sup>/324 sq ft  
SIZE AND DIMENSIONS ARE APPROXIMATE, ACTUAL MAY VARY.