



MILNER STREET

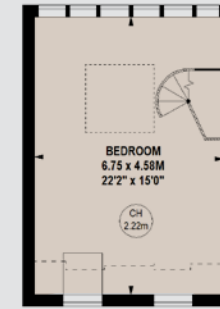
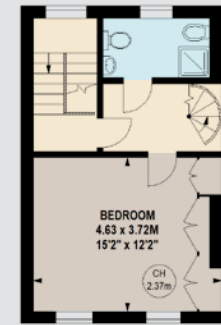
CHELSEA SW3



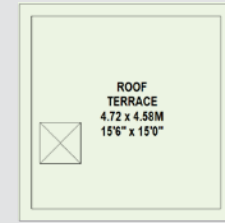


Built circa 1850 and now a mixed use freehold building measuring over 2,000 sq ft, with two offices occupying the lower two floors and a charming two bedroom flat set over the upper two floors complete with a fabulous private roof terrace.

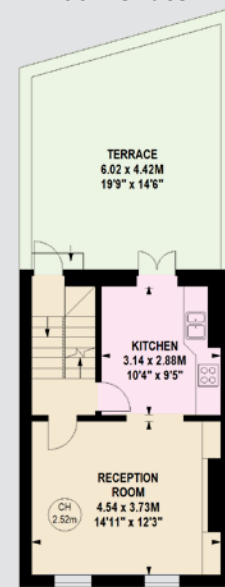
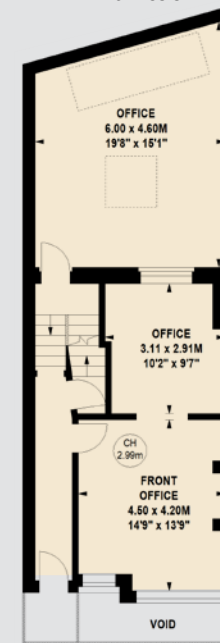
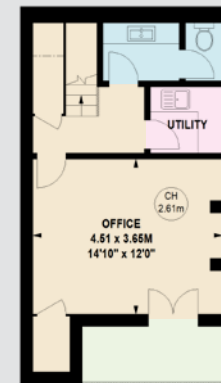
Milner Street is located within easy reach of the boutiques, restaurants and transport links of Sloane Square and the King's Road.



Approximate gross internal area
191.75 sq m / 2,064 sq ft



Ground Floor Entrance



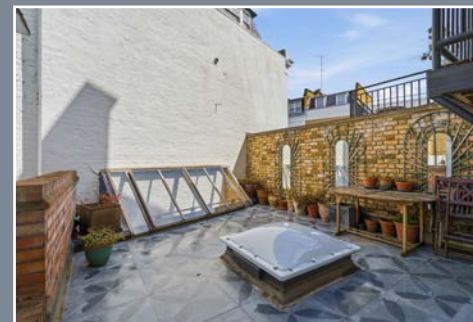
Energy Efficiency Rating		Current	Potential
Vary energy efficient - lower running costs			
(92-100)	A		
(81-91)	B		
(69-80)	C		
(55-68)	D		
(39-54)	E		
(21-38)	F		
(1-20)	G		
Not energy efficient - higher running costs			
England & Wales		72	83
EU Directive 2002/91/EC			

Features

- Two Office Unit
- Separate Two Bedroom Flat
- Roof Terrace

Price £2,495,000
Tenure Freehold

These details have been prepared for general guidance only and should not be relied upon by prospective purchasers/tenants who before proceeding must check and otherwise satisfy themselves as to the property and the nature, state and availability of any facility or service.



www.nicolasvanpatrick.com